

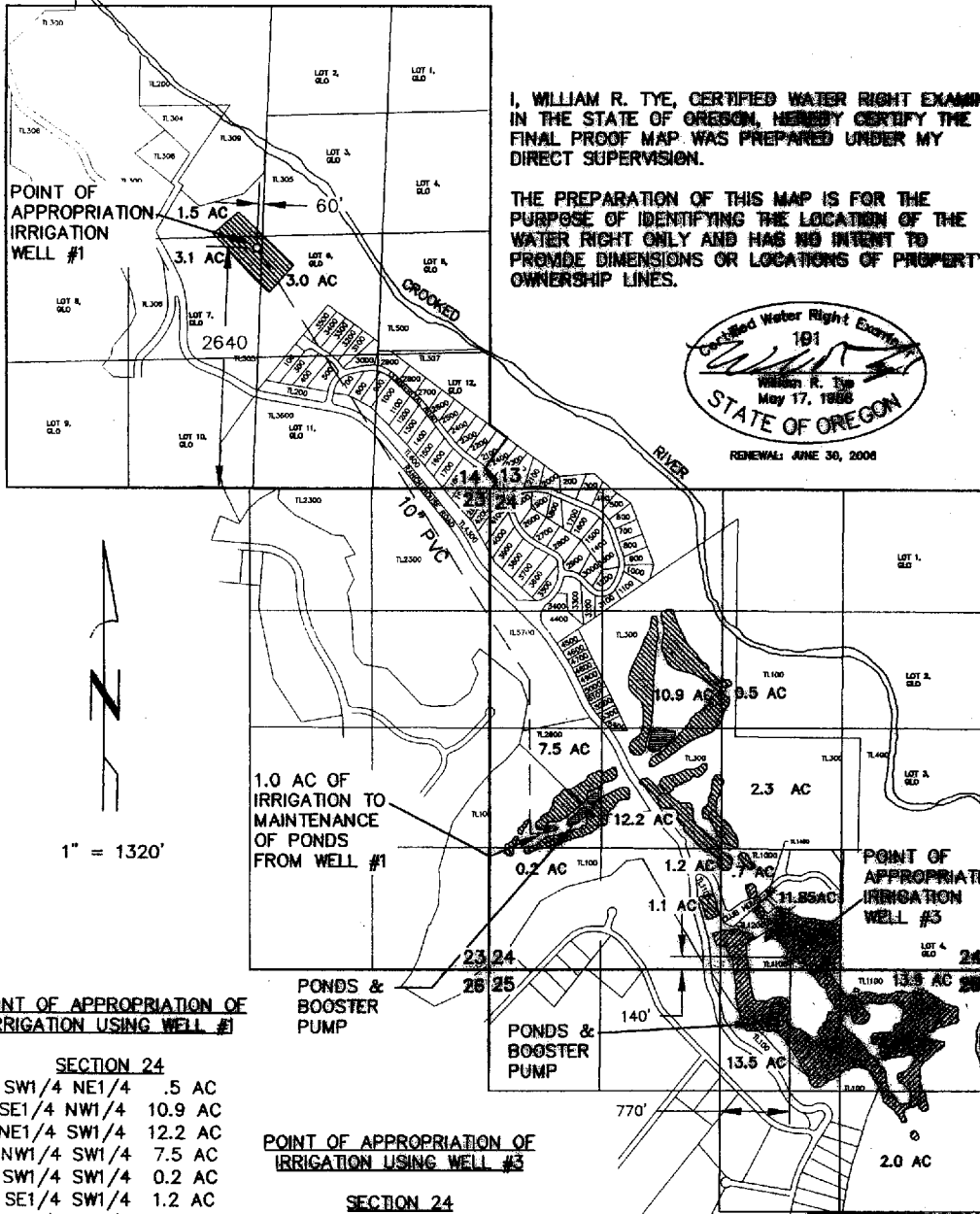


**FINAL PROOF MAP
FOR
CROOKED RIVER RANCH GOLF COURSE
CERTIFICATE# 75144 TRANSFER# T-6828**

LOCATED IN SECTION 14, SECTION 24, THE NORTHEAST
ONE-QUARTER OF SECTION 25, TOWNSHIP 13, RANGE 12
EAST, W.M., JEFFERSON COUNTY, OREGON

-  44.1 AC FROM WELL #1
 -  42.35 AC FROM WELL #3
- TOTAL OF 86.45 AC
OF WATER RIGHTS



I, WILLIAM R. TYE, CERTIFIED WATER RIGHT EXAMINER
IN THE STATE OF OREGON, HEREBY CERTIFY THE
FINAL PROOF MAP WAS PREPARED UNDER MY
DIRECT SUPERVISION.

THE PREPARATION OF THIS MAP IS FOR THE
PURPOSE OF IDENTIFYING THE LOCATION OF THE
WATER RIGHT ONLY AND HAS NO INTENT TO
PROMOTE DIMENSIONS OR LOCATIONS OF PROPERTY
OWNERSHIP LINES.



**POINT OF APPROPRIATION OF
IRRIGATION USING WELL #1**

- SECTION 24**
- SW1/4 NE1/4 .5 AC
 - SE1/4 NW1/4 10.9 AC
 - NE1/4 SW1/4 12.2 AC
 - NW1/4 SW1/4 7.5 AC
 - SW1/4 SW1/4 0.2 AC
 - SE1/4 SW1/4 1.2 AC
 - NW1/4 SE1/4 2.3 AC
 - SW1/4 SE1/4 0.7 AC
- SECTION 14**
- SE1/4 NW1/4 1.5 AC
 - NE1/4 SW1/4 3.1 AC
 - NW1/4 SE1/4 3.0 AC

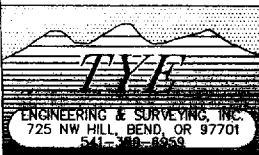
**POINT OF APPROPRIATION OF
IRRIGATION USING WELL #3**

- SECTION 24**
- SE1/4 SW1/4 1.1 AC
 - SW1/4 SE1/4 11.85 AC
- SECTION 25**
- NE1/4 NE1/4 13.9 AC
 - NW1/4 NE1/4 13.5 AC
 - SE1/4 NE1/4 2.0 AC

RECEIVED

DEC 27 2004

WATER RESOURCES DEPT
SALEM, OREGON



TITLE: CROOKED RIVER FINAL PROOF MAP

JOB NO: 1153

SCALE: 1" = 1320'

FIELD BOOK NO:

DWG NAME: FINAL WR MAP

DRAWN BY: A.T.T.

DATE: 12/09/04

SHEET: 1 OF 1