

RECEIVED

SEP 15 1999

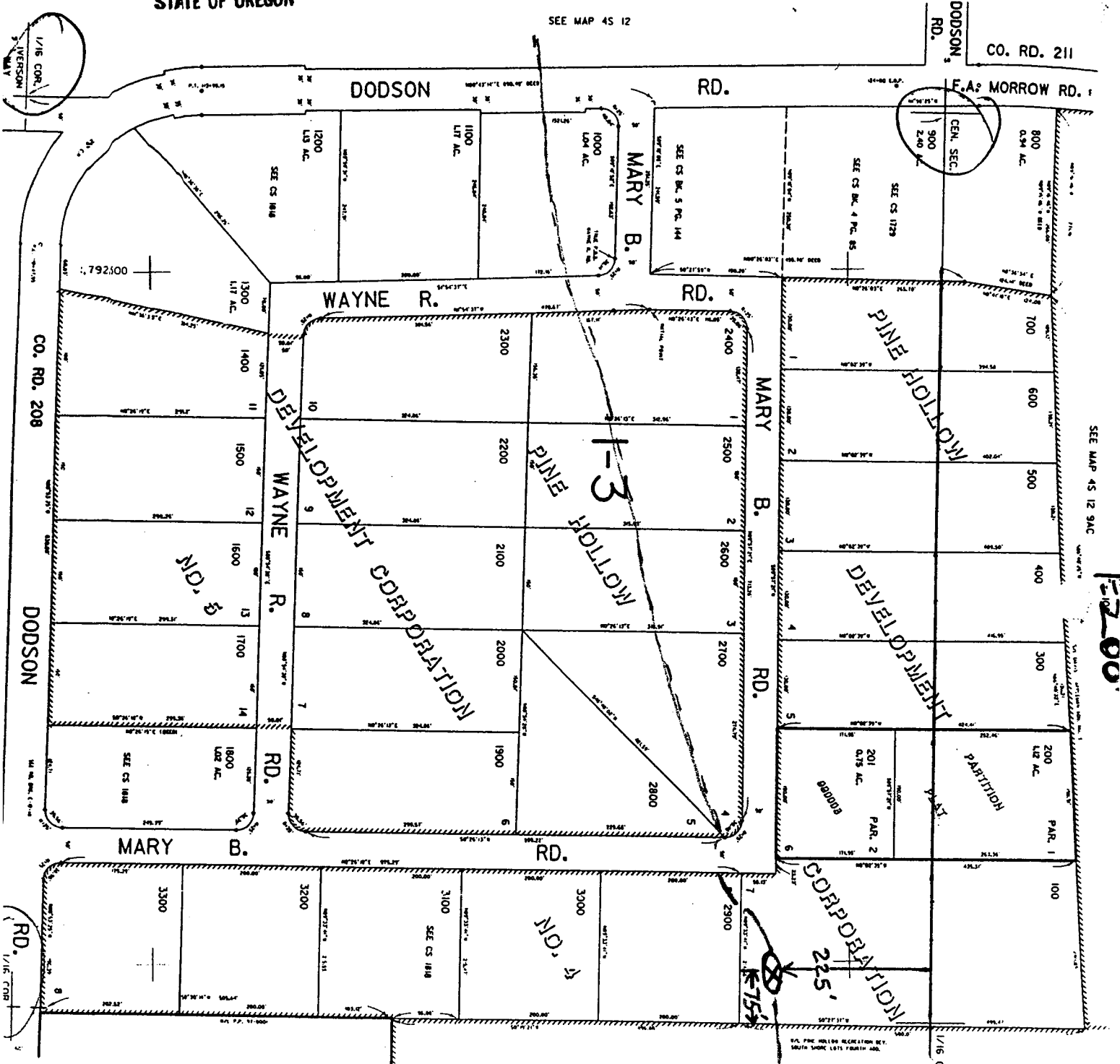
DEPT. OF REVENUE
STATE OF OREGON

RECEIVED

JUN 13 2002

WATER RESOURCES DEPT.
SALEM, OREGON

SCALE 1:2400



SEE MAP 45 12 9AC

1:2400

SEE MAP 45 12 90A

572500

RECEIVED

JAN 30 2004

WATER RESOURCES DEPT
SALEM, OREGON

Application No.

Permit No.

R 85196
R 13417
45 12 90A