

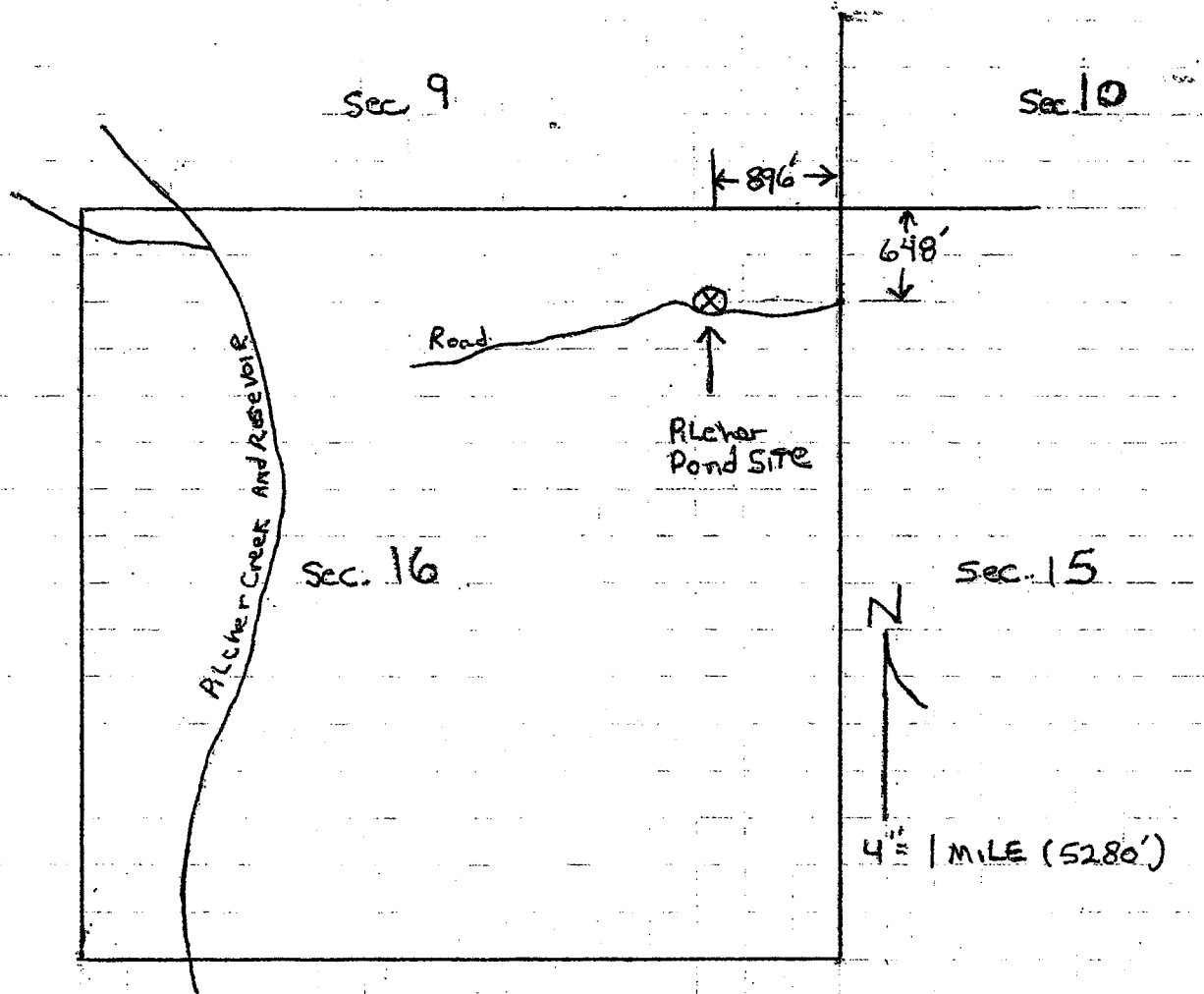
HEFFERNAN WATER STORAGE APPLICATION

TAX LOT: 2200

LEGAL: NE¹/₄ NE¹/₄ Sec. 16, Twp 6S, RGE 38E

Coordinates: N 45° 02' 55.68"
W 118° 03' 29.7"

NAME: PILCHER Pond



Pond Location: 648 South and 896 West of
The Northeast Corner of
Section 16

RECEIVED

NOV 21 2003

WATER RESOURCES DEPT
SALEM OREGON