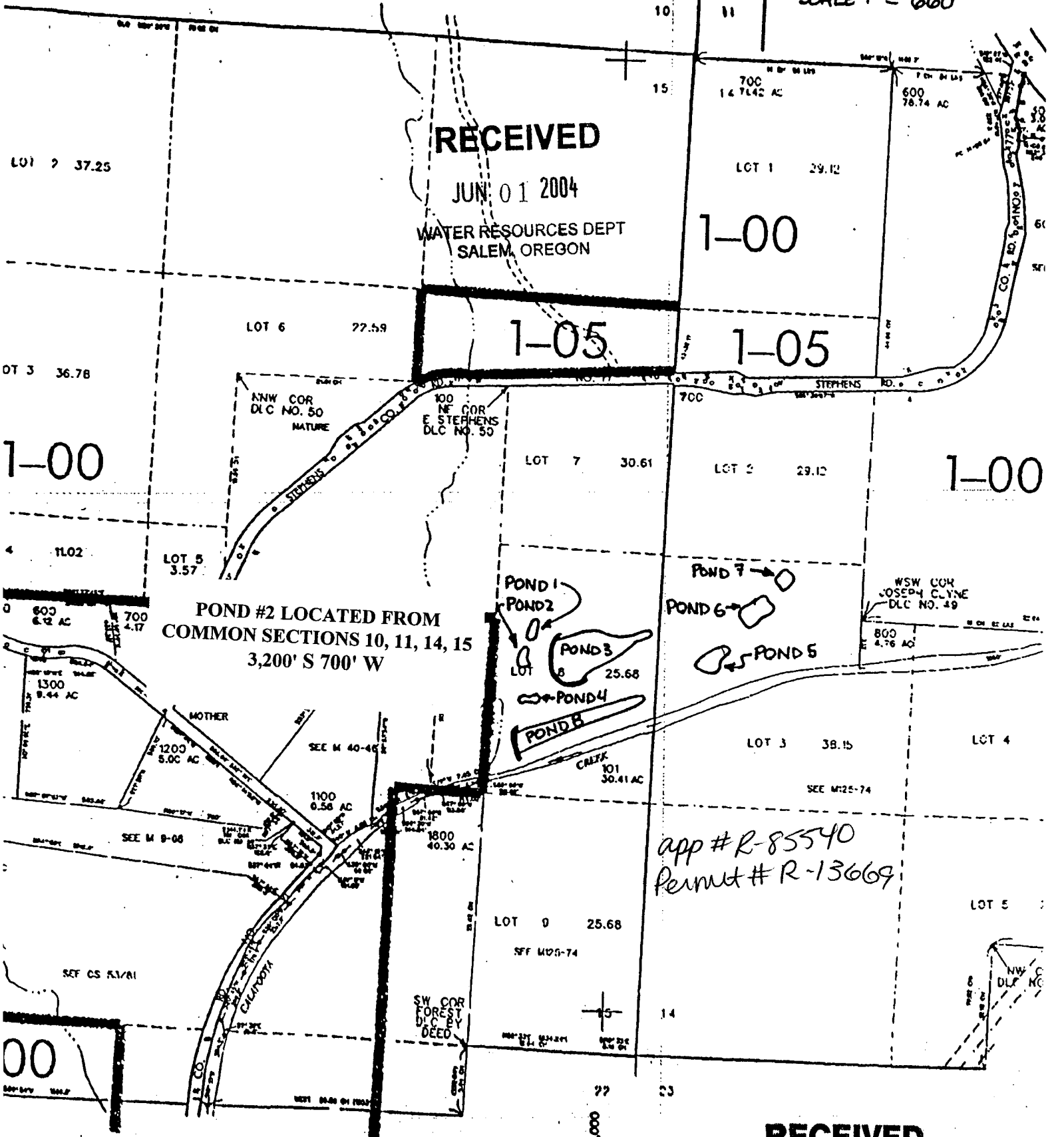


SEC. 15 T.25S. R. 6W W.M.  
DOUGLAS COUNTY

WILCOX FAMILY FARM LLC WETLAND ENHANCEMENT  
REVISED ON 6-4-97  
SEE MAP 25 6 10



SCALE 1" = 660'



RECEIVED

JUN 01 2004

WATER RESOURCES DEPT  
SALEM, OREGON

1-00

1-05

1-05

1-00

POND #2 LOCATED FROM  
COMMON SECTIONS 10, 11, 14, 15  
3,200' S 700' W

app # R-85540  
Permit # R-13669

RECEIVED

APR 07 2003

SEE MAP 25 6 22