

RECEIVED

JUN 01 2004

WATER RESOURCES DEPT
SALEM, OREGON

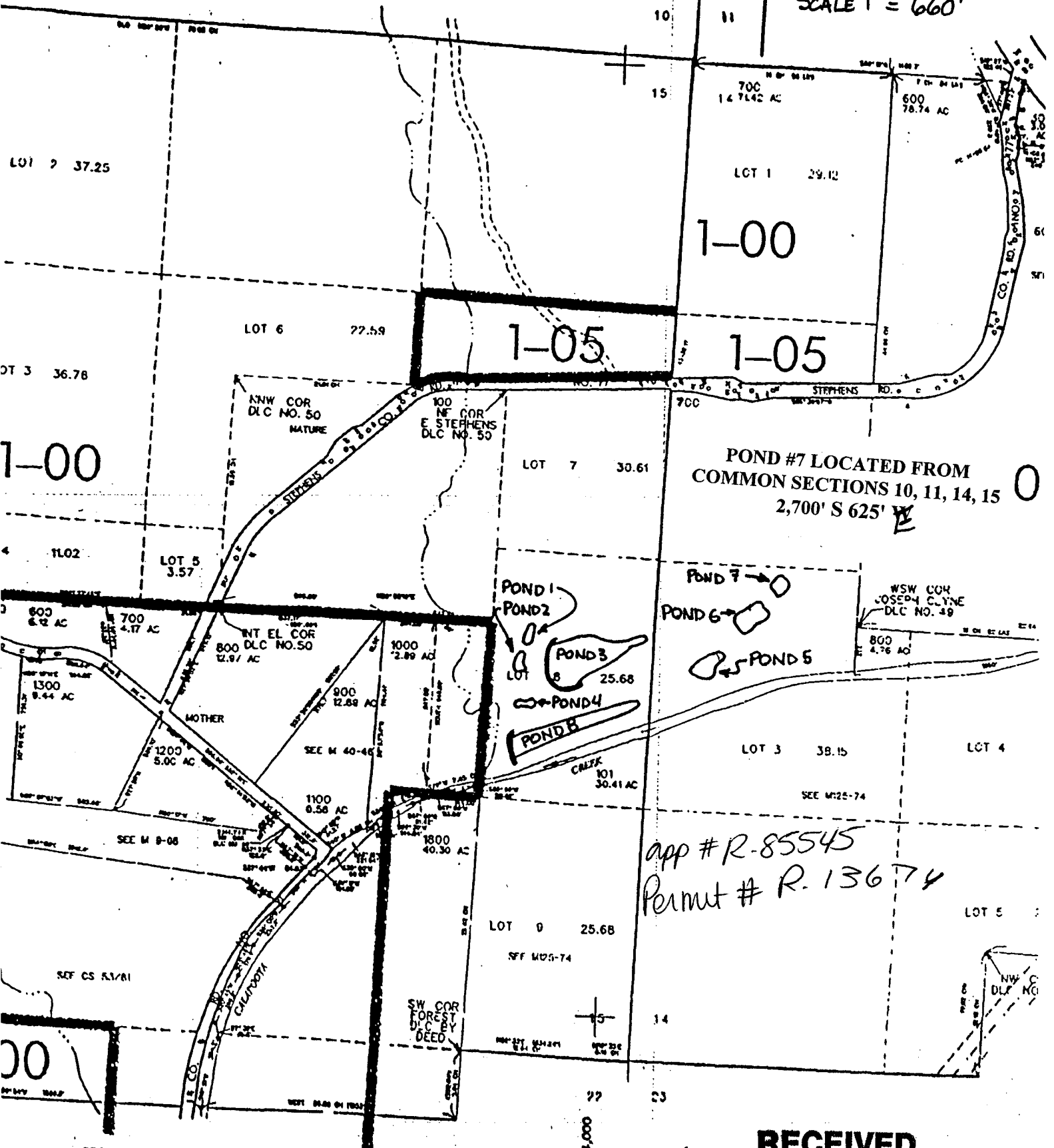
SCALE 1" = 660'



SEC. 15 T.25S. R. 6W W.M.
DOUGLAS COUNTY

WILCOX FAMILY FARM LLC WETLAND ENHANCEMENT
REVISED ON 4-4-97

SEE MAP 25 6 10



POND #7 LOCATED FROM
COMMON SECTIONS 10, 11, 14, 15
2,700' S 625' E

app # R-85545
Permit # R-13674

SEE MAP 25 6 22

RECEIVED

APR 07 2003