

REV: 02-13-20
 CANC.
 102
 104
 200
 301
 400
 502
 600T1
 900

MAP 1 of 2

RECEIVED
 OCT 23 2003
 WATER RESOURCES DEPT
 SALEM, OREGON

- 12 6 1

BENTON COUNTY

THIS MAP WAS PREPARED FOR ASSESSMENT PURPOSES ONLY

1" = 400'

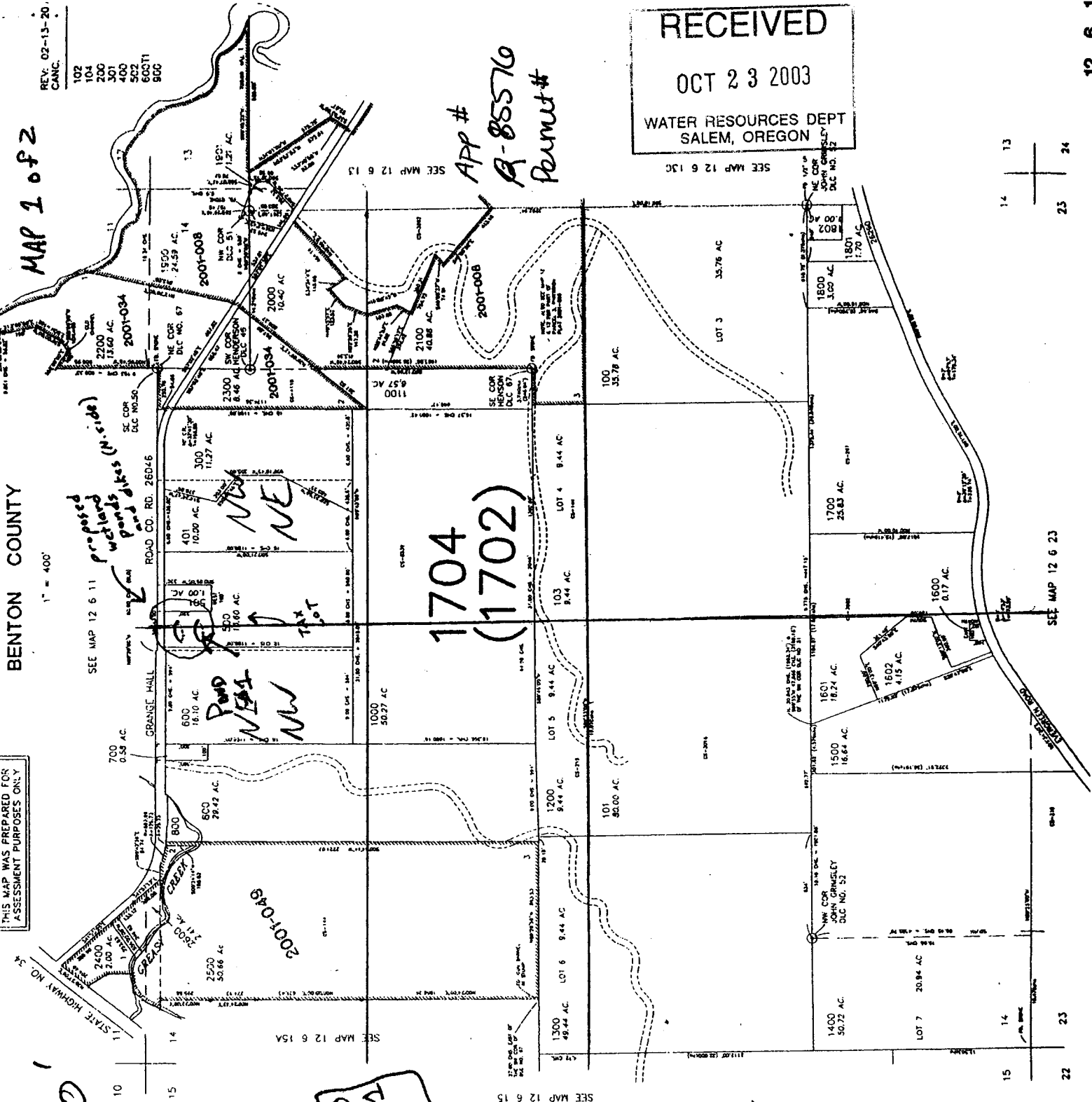
SEE MAP 12 6 11

SEE MAP 12 6 15A

SEE MAP 12 6 15

SEE MAP 12 6 13C

SEE MAP 12 6 23



1704
 (1702)

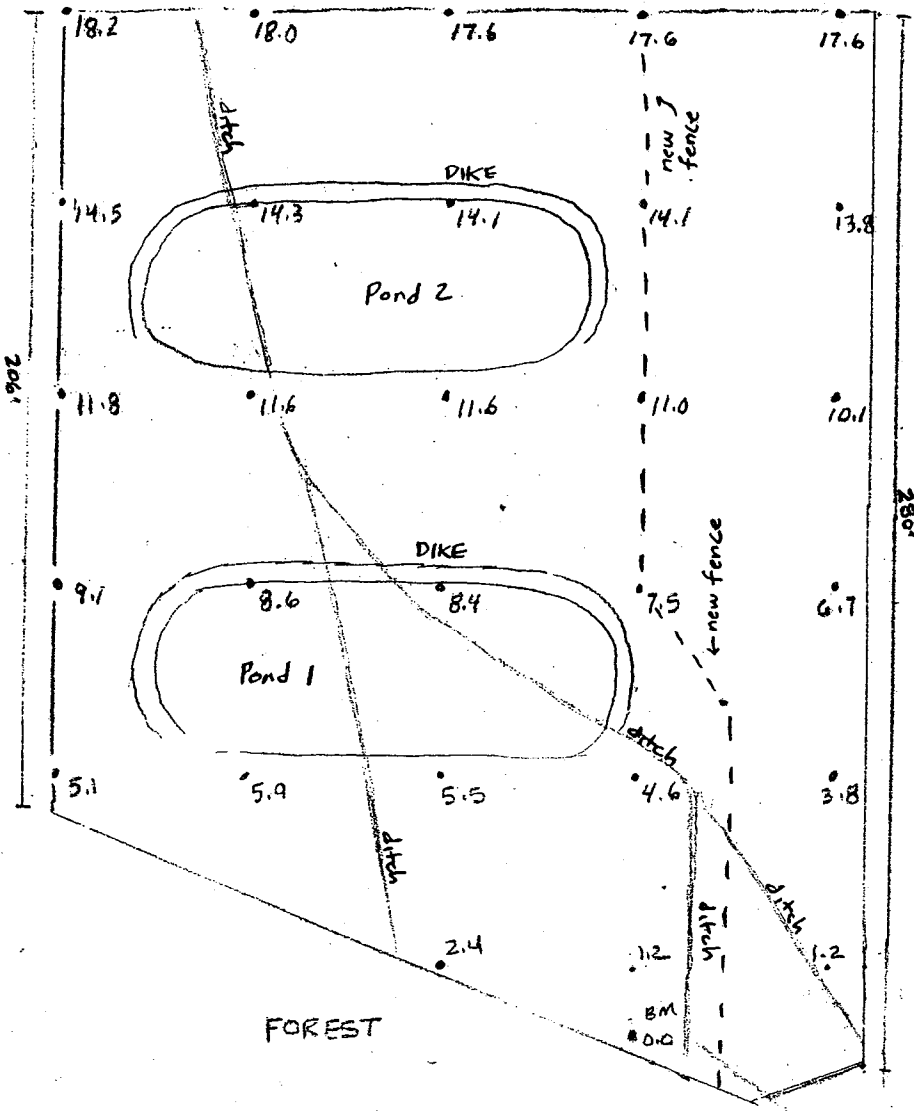
dam locations:
 2600 feet east and Pond #2
 ~100 feet south of
 the Northwest corner
 of section 14; and
 2600 feet east and Pond #1
 ~200 feet south of
 the Northwest corner
 of section 14.

Pond legend:



RECEIVED
 APR 30 2003
 WATER RESOURCES DEPT
 SALEM, OREGON





SCALE: 1" = 90 ft.

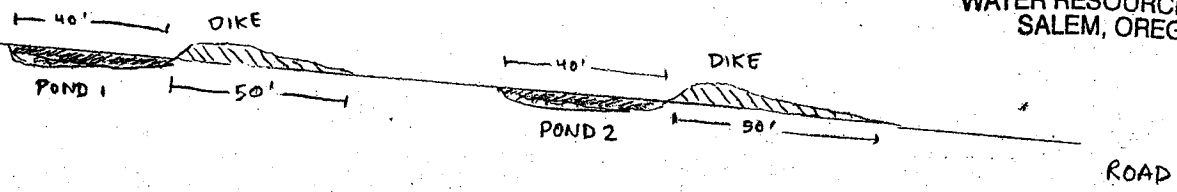
Map 2 of 2

RECEIVED
 OCT 23 2003
 WATER RESOURCES DEPT
 SALEM, OREGON

RECEIVED
 APR 30 2003
 WATER RESOURCES DEPT
 SALEM, OREGON

APPLICATION: 85576
 PERMIT: R-13736

RECEIVED
 APR 23 2003
 WATER RESOURCES DEPT.
 SALEM, OREGON



CROSS-SECTIONAL VIEW (following western ditch line)