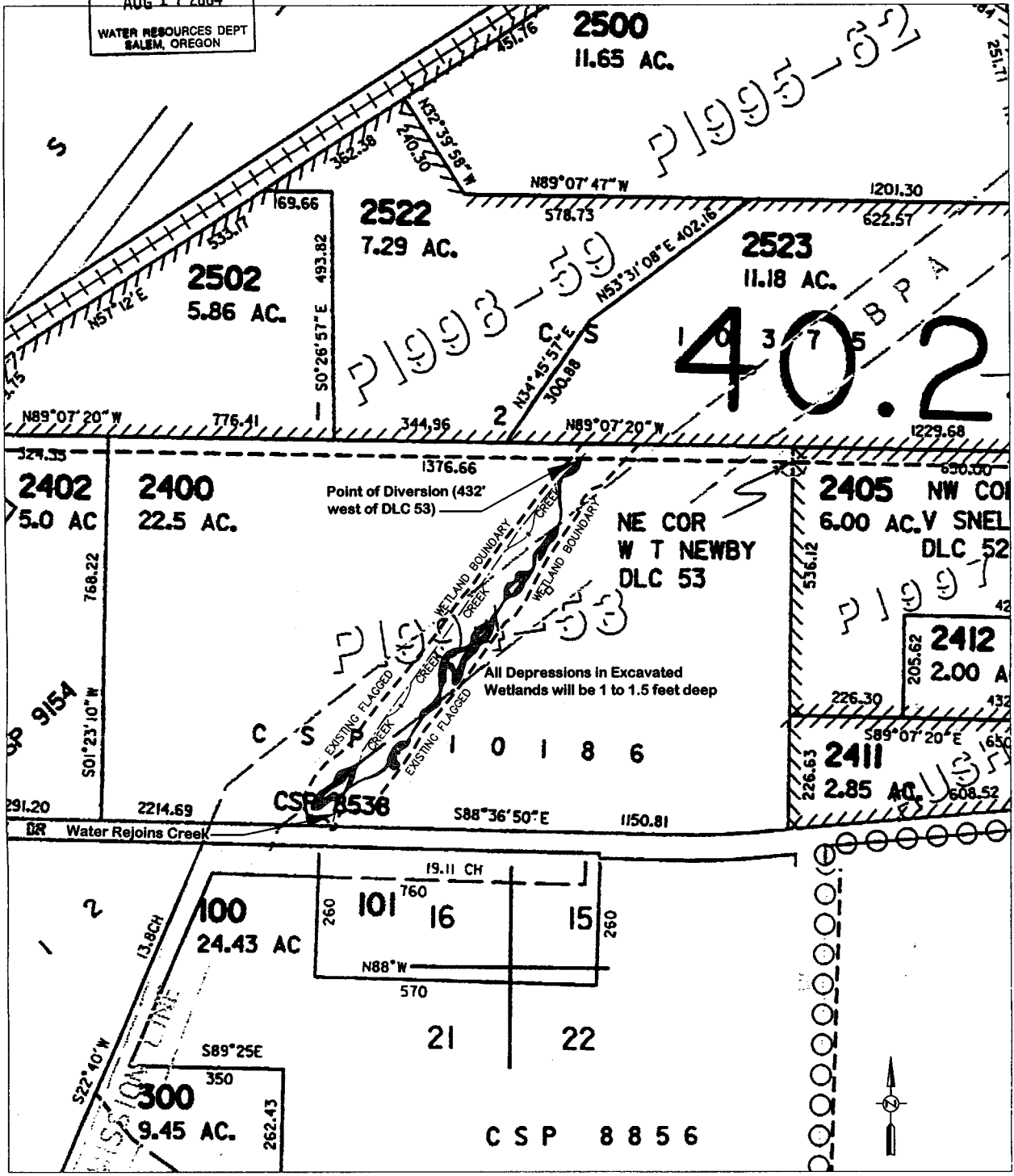


RECEIVED  
 AUG 17 2004  
 WATER RESOURCES DEPT  
 SALEM, OREGON



TAX LOT 2400  
 T4S, R4W W.M.  
 SE 1/4 of SE 1/4 of SECTION 16 and  
 SW 1/4 of SW 1/4 of SECTION 15

POINT OF DIVERSION IS 432 FEET WEST  
 OF (NE COR W T NEWBY) DLC 53

 EXCAVATED WETLANDS