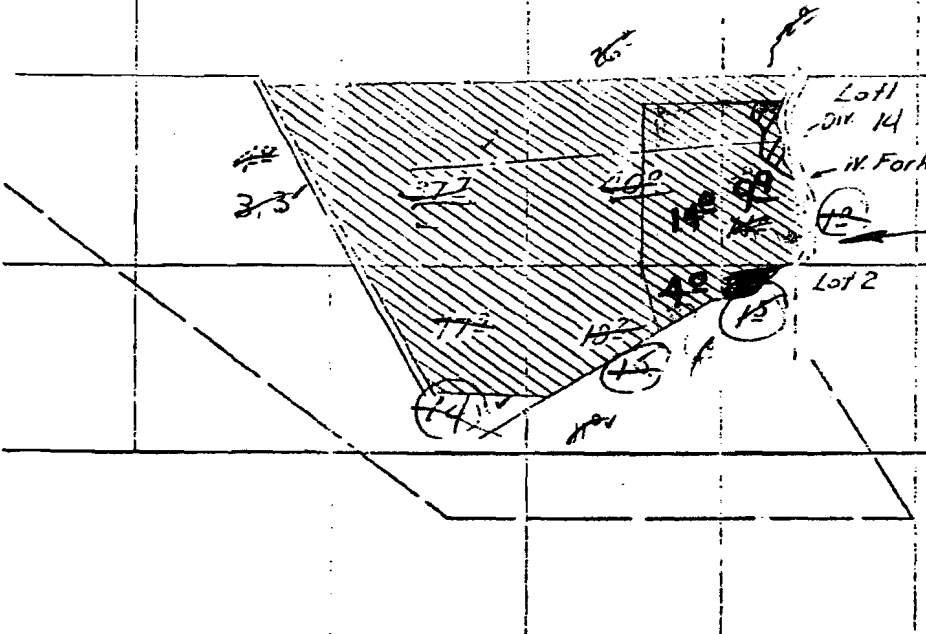


C-39604

M-27-1973

v23, P45

JOHN LOUISIGNOUT D.L.C. 52



AREA IN BLUE IS AN ACCURATE
 REPRESENTATION OF THE ACRES
 LISTED ON THE TRANSFER
 1-11-80

14

13

RECEIVED
 FEB 28 2005
 WATER RESOURCES DEPT.
 SALEM, OREGON

Surveyed Aug 15, 1941
 [Signature]

Acres 17702

Per 13308