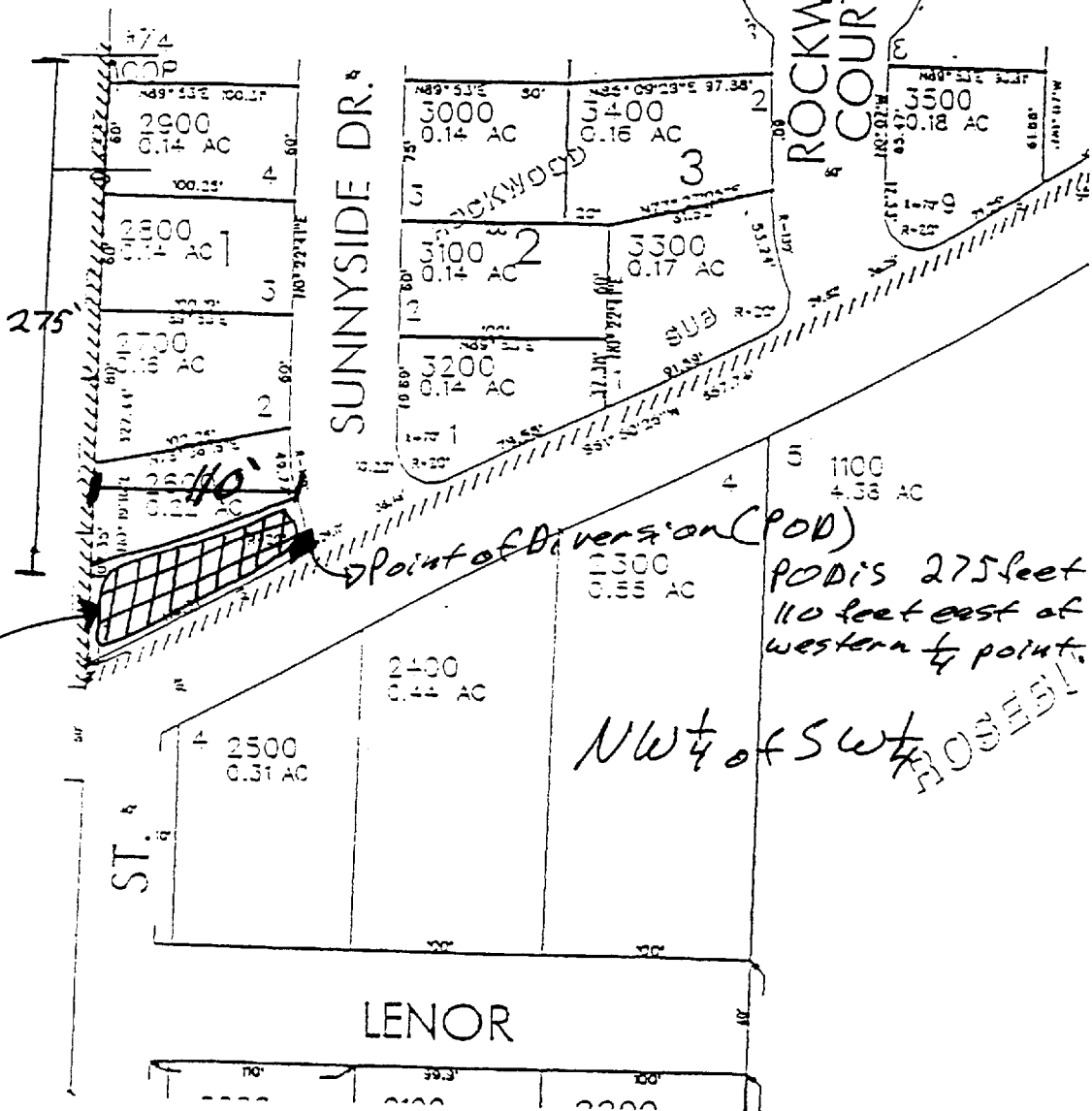


SEE MAP 28 6 22BC

N



"Pond"

Point of Diversion (POD)

POD is 275 feet south and 110 feet east of the western 1/4 point.

NW 1/4 of SW 1/4

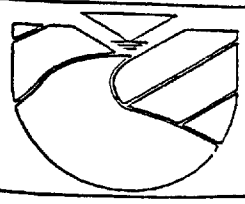


SCALE: 1 inch = 100 feet

RECEIVED

SEP 23 2003

WATER RESOURCES DEPT.
SALEM, OREGON



DOUGLAS COUNTY ASSESSORS TAX LOT MAP T28S-R6W-S22CB

Land And Water Environmental Services, Inc.
525 S.E. Main St
Roseburg, OR 97470
Tlf: (541) 672-0393/ Fax: 672-7170

Date: 12/24/02
Design: LAWESI
Drawn: BFL
Checked: LW

Project Name:
KDA-01
FIGURE 5