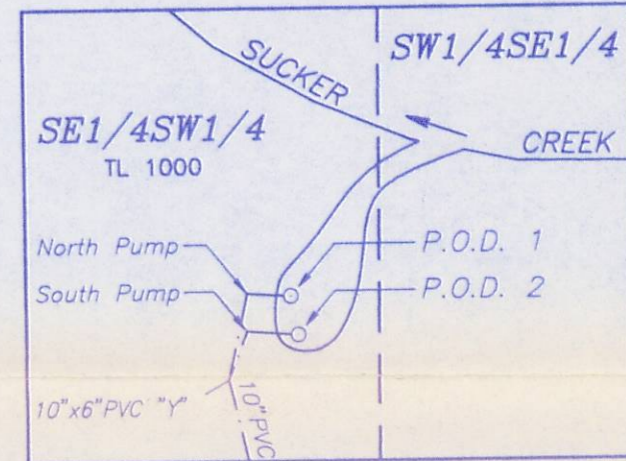
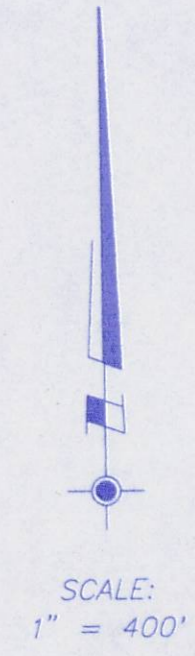
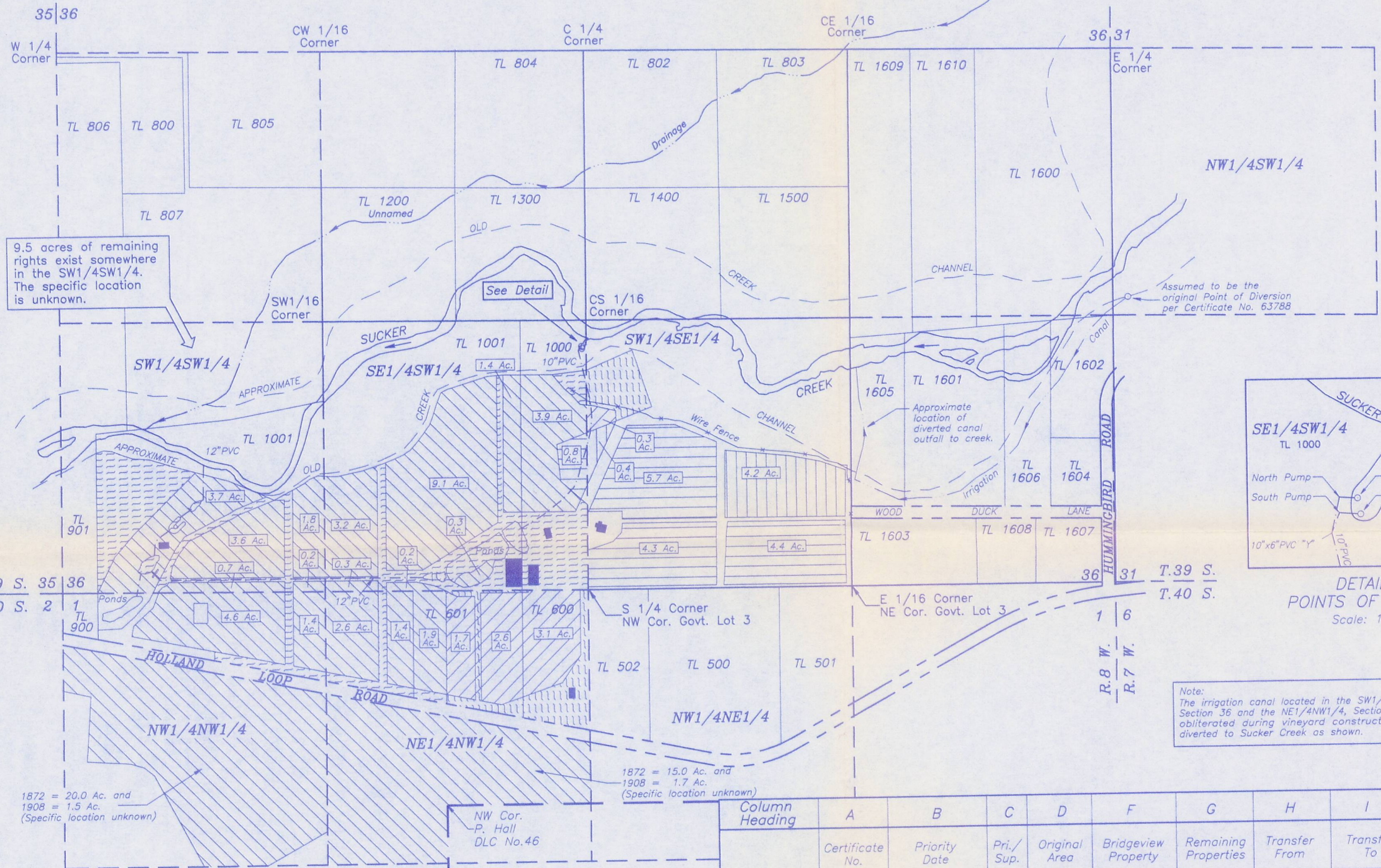


S1/2 Sec. 36, T.39 S.,R.8 W.,W.M.
 N1/2NW1/4 Sec. 1, T.40 S.,R.8 W.,W.M.

AMENDED



DETAIL OF POINTS OF DIVERSION
 Scale: 1" = 50'

- LEGEND:**
- Existing Place of Use (100.0 Acres) per Certificate No. 7148 (Priority Date = 1872)
 - Existing Building (Approximate location)
 - Existing Underground Pipeline (sizes as shown) (Approximate location)
 - Transfer From (15.2 Acres) per Certificate No. 7148 (Priority Date = 1872)
 - Transfer To (15.2 Acres) per Certificate No. 7148 (Priority Date = 1872)
 - Existing Place of Use (15.5 Acres) per Certificate No. 7148 (Priority Date = 1908)
 - Transfer From (4.6 Acres) per Certificate No. 7148 (Priority Date = 1908)
 - Transfer To (4.6 Acres) per Certificate No. 7148 (Priority Date = 1908)

Assumed original Point of Diversion per Certificate No. 63788 is located in the NW1/4SW1/4, Sec. 31, T.39S.,R.7W.,W.M.; Irrigation Canal - 142°N & 75°E from SW cor., Sec. 31

Proposed Primary Points of Diversion per this Application

P.O.D. 1 23°W & 121°N from SE cor. of SE1/4SW1/4 Sec. 36, being within SE1/4SW1/4, Sec. 36, T.39S.,R.8W.,W.M.

P.O.D. 2 21°W & 120°N from SE cor. of SE1/4SW1/4 Sec. 36, being within SE1/4SW1/4, Sec. 36, T.39S.,R.8W.,W.M.

This plat was prepared for the purpose of identifying the location of the water right only. There is no intent to provide dimensions or locations of property ownership lines.

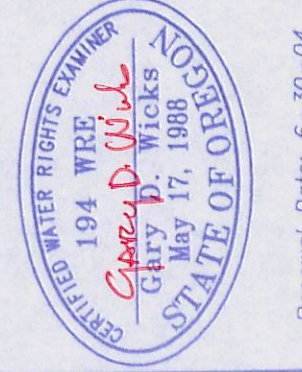
Column Heading	A	B	C	D	F	G	H	I	J	(G+J)	
Certificate No.	Priority Date	Pri./Sup.	Original Area	Bridgeview Property	Remaining Properties	Transfer From	Transfer To	Transfer From	Transfer To	Proposed Area (Bridgeview)	Proposed New Total
Section 36											
T.39 S., R.8 W.											
SW1/4SW1/4	7148	1872	P	25.0 Ac.	15.5 Ac.	9.5 Ac.	5.5 Ac.		10.0 Ac.	19.5 Ac.	
SE1/4SW1/4	7148	1872	P	26.0 Ac.	26.0 Ac.		7.6 Ac.	0.8 Ac.	19.2 Ac.	19.2 Ac.	
SW1/4SE1/4	7148	1872	P					14.4 Ac.	14.4 Ac.	14.4 Ac.	
		1908	P	2.0 Ac.	2.0 Ac.		1.7 Ac.	4.6 Ac.	4.9 Ac.	4.9 Ac.	
Section 1											
T.40 S., R.8 W.											
NE1/4NW1/4	7148	1872	P	22.0 Ac.	7.0 Ac.	15.0 Ac.	1.1 Ac.		5.9 Ac.	20.9 Ac.	
	7148	1908	P	12.0 Ac.	10.3 Ac.	1.7 Ac.	2.9 Ac.		7.4 Ac.	9.1 Ac.	
NW1/4NW1/4	7148	1872	P	27.0 Ac.	7.0 Ac.	20.0 Ac.	1.0 Ac.		6.0 Ac.	26.0 Ac.	
	7148	1908	P	1.5 Ac.		1.5 Ac.				1.5 Ac.	
TOTALS:		1872	P	100.0 Ac.	55.5 Ac.	44.5 Ac.	15.2 Ac.	15.2 Ac.	55.5 Ac.	100.0 Ac.	
		1908	P	15.5 Ac.	12.3 Ac.	3.2 Ac.	4.6 Ac.	4.6 Ac.	12.3 Ac.	15.5 Ac.	

WATER RIGHT APPLICATION AND TRANSFER MAP

SURVEYED BY:
WICKS ENGINEERING & SURVEYING
 311 N.E. "D" Street
 Grants Pass, Oregon 97526
 Tel. (541) 479-3436

LOCATED IN
 S1/2 Sec. 36, T.39 S.,R.8 W.,W.M. &
 N1/2NW1/4 Sec. 1, T.40 S.,R.8 W.,W.M.
 Josephine County, Oregon

SURVEYED FOR:
BRIDGEVIEW VINEYARDS WINERY
 4210 Holland Loop Road
 Cave Junction, OR. 97523
 Tel. (541) 592-4688



PROJECT NO. 566-98-383
 DRAWING NO. (KERVAN.DWG) 301-18.24
 DATE Nov. 11, 1998
 Revision No. 4 = 10-11-04
 SCALE 1" = 400'

SHEET NO. 1 of 1

Renewal Date: 6-30-04