

INTERVAL 20 FEET
 AT 10-FOOT CONTOURS
 DATUM OF 1929

NATIONAL MAP ACCURACY STANDARDS
 COLORADO 80225, OR RESTON, VIRGINIA 22092
 AND SYMBOLS IS AVAILABLE ON REQUEST



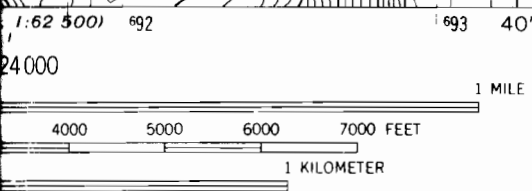
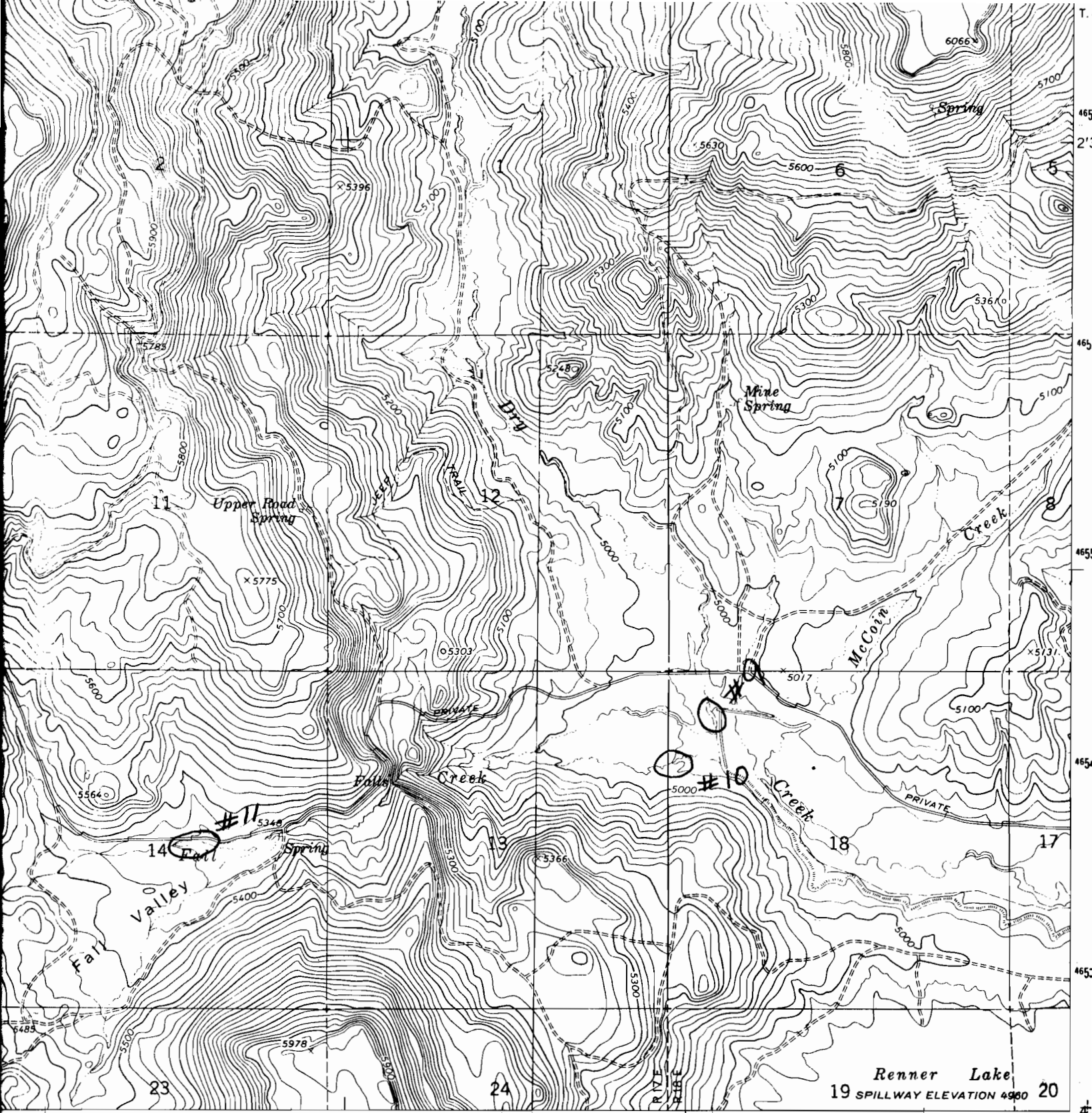
QUADRANGLE LOCATION

Revisions shown in purple compiled from aerial photographs taken 1979 and other source data. This information not field checked. Map edited 1980.

ROAD CLASSIFICATION
 Medium-duty ——— Light-duty ———
 Unimproved dirt - - - - -

FITZWATER POINT, OREG.
 N4200—W12030/7.5

1964
 PHOTOREVISED 1980



ROAD CLASSIFICATION
 Unimproved dirt
RECEIVED
 JUL 11 1996
 WATER RESOURCES DEPT.
 SALEM, OREGON
 DOG LAKE, OREG.
 N4200—W12037.5/7.5

Revisions shown in purple compiled from aerial photographs taken 1979 and other source data. This information not to be used for navigation.

1964
 PHOTOENLARGED, 1980