

Application No. R-80892 - 80902
Permit No.
"CERTIFICATE NO. 7215-7216"

RFC
DEC 8 1984
SALEM, OREGON

ROAD LEGEND
Improved Road
Unimproved Road
Trail
Intrastate Route
U.S. Route
State Route

QUADRANGLE LOCATION
1 2 3
4 5
6 7 8

SCALE 1:24 000
KILOMETERS
METERS
MILES
FEET
CONTOUR INTERVAL 40 FEET
To convert meters to feet multiply by 3.2808
To convert feet to meters multiply by .3048

PROVISIONAL MAP
Produced from original
manuscript drawings. Infor-
mation shown as of date of
field check.

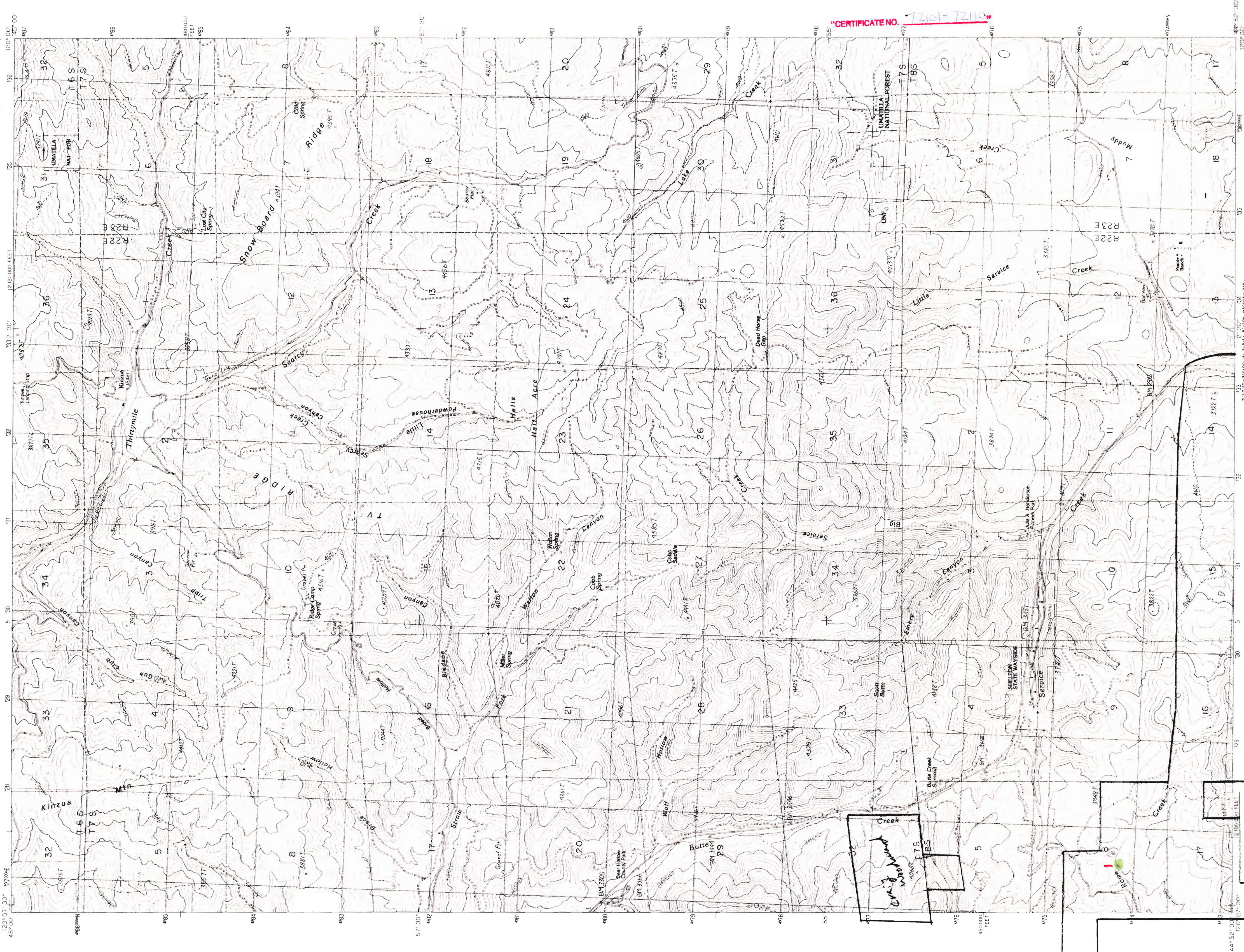
PRODUCED BY THE UNITED STATES GEOLOGICAL SURVEY
COMPILED FROM AERIAL PHOTOGRAPHS TAKEN IN 1958 AND NOV 1984
FIELD CHECKED 1986 MAP EDITED 1990
GRID 1000-METER UNIVERSAL TRANSVERSE MERCATOR ZONE 10
10 000-FOOT STATE GRID TICS OREGON SOUTH ZONE
UPM GRID DECLINATION NORTH DECLINATION 1 42 EAST
VERTICAL DATUM 1929 NATIONAL GEODETIC VERTICAL DATUM OF 1929
HORIZONTAL DATUM 1927 NORTH AMERICAN DATUM
To place on the predicted North American Datum of 1983,
move the projection lines as shown by dashed corner ticks
(20) meters east
There may be alternate labels within the boundaries of any
Federal or State reservations shown on this map

CADLE BUTTE, OREGON
PROVISIONAL EDITION 1990
44120-C5-TF-024

Ochoco

Apps. R-80892 & R-80902

148



Application No. R-80892 - R-80902
Permit No.

CERTIFICATE NO. 72161-72110

ROAD LEGEND
Improved Road
Unimproved Road
Trail
Interstate Route
U.S. Route
State Route

SCALE 1:24 000
KILOMETERS
MILES
CONTOUR INTERVAL 40 FEET
To convert meters to feet, multiply by 3.2808
To convert feet to meters, multiply by 0.3048

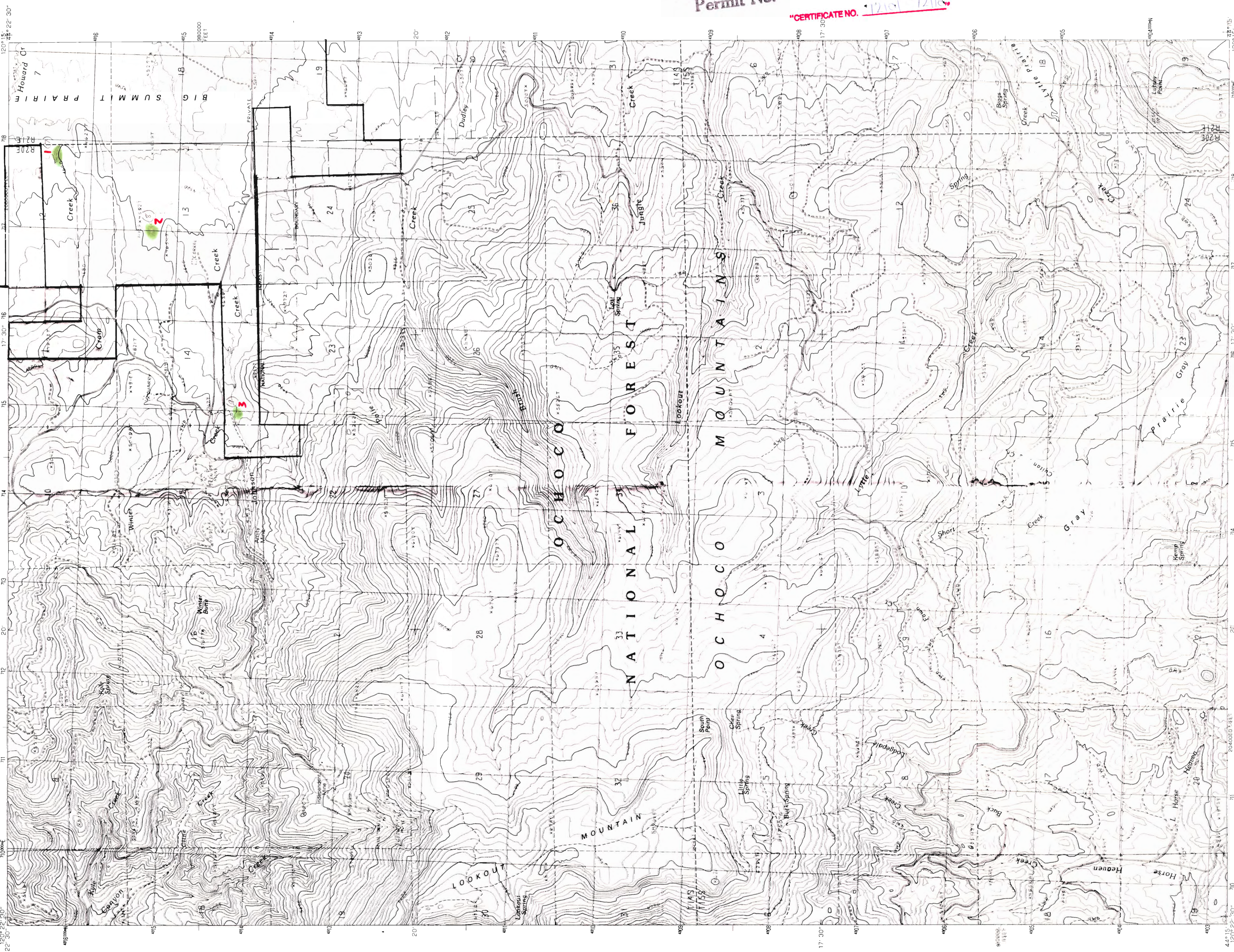
PROVISIONAL MAP
Produced from original
manuscript drawings. Information shown as of date of field check.

PRODUCED BY THE UNITED STATES GEOLOGICAL SURVEY
COMPILED FROM AERIAL PHOTOGRAPHS TAKEN IN 1963
LIMITED REVISION FROM AERIAL PHOTOGRAPHS TAKEN IN 1986
LIMITED REVISION FROM AERIAL PHOTOGRAPHS TAKEN IN 1987
LIMITED REVISION FROM AERIAL PHOTOGRAPHS TAKEN IN 1988
LIMITED REVISION FROM AERIAL PHOTOGRAPHS TAKEN IN 1989
LIMITED REVISION FROM AERIAL PHOTOGRAPHS TAKEN IN 1990
LIMITED REVISION FROM AERIAL PHOTOGRAPHS TAKEN IN 1991
LIMITED REVISION FROM AERIAL PHOTOGRAPHS TAKEN IN 1992
LIMITED REVISION FROM AERIAL PHOTOGRAPHS TAKEN IN 1993
LIMITED REVISION FROM AERIAL PHOTOGRAPHS TAKEN IN 1994
LIMITED REVISION FROM AERIAL PHOTOGRAPHS TAKEN IN 1995
LIMITED REVISION FROM AERIAL PHOTOGRAPHS TAKEN IN 1996
LIMITED REVISION FROM AERIAL PHOTOGRAPHS TAKEN IN 1997
LIMITED REVISION FROM AERIAL PHOTOGRAPHS TAKEN IN 1998
LIMITED REVISION FROM AERIAL PHOTOGRAPHS TAKEN IN 1999
LIMITED REVISION FROM AERIAL PHOTOGRAPHS TAKEN IN 2000

148

Apps. R-80892 & R-80902

FOR SALE BY U. S. GEOLOGICAL SURVEY, DENVER, COLORADO 80225, OR RESTON, VIRGINIA 22092
THIS MAP COMPLETES WITH NATIONAL MAP A. C. CURRY: STANDARDS
KINZUA, OREG.
PROVISIONAL EDITION 1987
44120-HI-TF-024



Application No. R-80892 + R-80902
Permit No.
"CERTIFICATE NO. 12101 12110"

ROAD LEGEND

- Improved Road
- Unimproved Road
- Trail
- Interstate Route
- U.S. Route
- State Route

QUADRANGLE LOCATION

1	Whisper Point
2	Ochoco Butte
3	Whisper Point
4	Corona Butte
5	Williams Prairie
6	Post Hill
7	Post Hill
8	Committee Creek

SCALE 1:24 000

CONTOUR INTERVAL 40 FEET
SUPPLEMENTARY CONTOUR INTERVAL 20 FEET

To convert meters to feet multiply by 3.2808
To convert feet to meters multiply by .3048

QUADRANGLE LOCATION

1 2 3 4 5 6 7 8

PROVISIONAL MAP
Produced from original
manuscript drawings. Information
shown as of date of
field check.

PRODUCED BY THE UNITED STATES GEOLOGICAL SURVEY
FROM AERIAL PHOTOGRAPHS TAKEN IN 1984
AND 1985. MAP EDITED IN 1984.
FIELD CHECKED IN 1986. MAP EDITED IN 1990.
GRID 1000-METER UNIVERSAL TRANSVERSE MERCATOR, ZONE 10
10 000-FOOT STATE GRID TICKS. OREGON, SOUTH ZONE
USNG GRID DECLINATION 18 000 EAST
MAGNETIC DECLINATION 18 000 EAST
VERTICAL DATUM 1927 NORTH AMERICAN DATUM
To place on the predicted North American Datum of 1983,
lower the projection lines as shown by dashed corner ticks
There may be private inholdings within the boundaries of any
Federal or State reservations shown on this map.

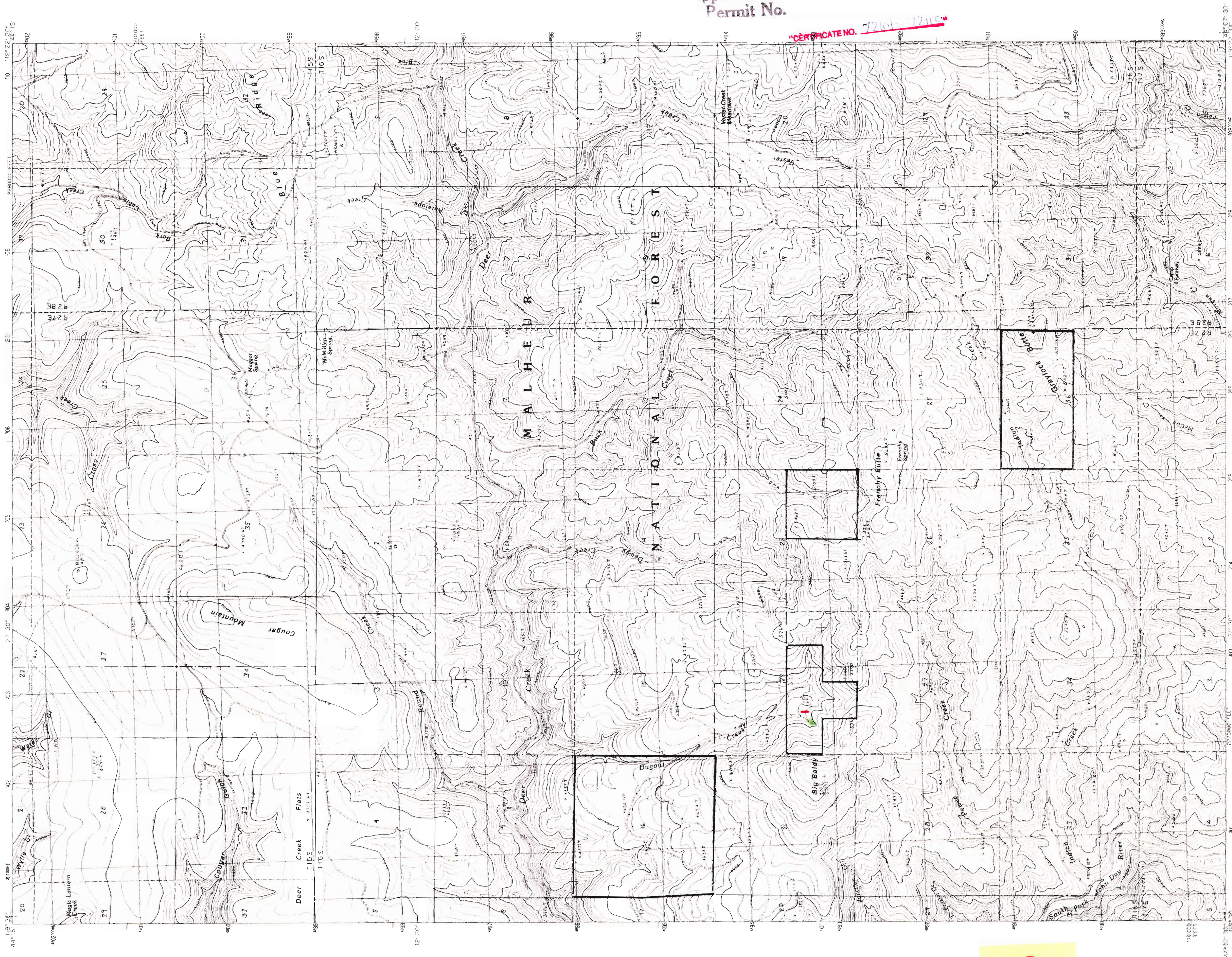
THIS MAP COMPLES WITH NATIONAL MAP ACCURACY STANDARDS
FOR SALE BY U.S. GEOLOGICAL SURVEY, DENVER, COLORADO 80225, OR RESTON, VIRGINIA 22092

LOOKOUT MOUNTAIN, OREGON
PROVISIONAL EDITION 1990
44120-C3 TF-024

148

UNITED STATES
DEPARTMENT OF THE INTERIOR
GEOLOGICAL SURVEY

GRAYLOCK BUTTE QUADRANGLE
OREGON-GRANT CO.
7.5 MINUTE SERIES (TOPOGRAPHIC)



Application No. R-80892 - R-80902
Permit No.

CERTIFICATE NO. 12164-12165

PRODUCED BY THE UNITED STATES GEOLOGICAL SURVEY
CONTROL BY AERIAL PHOTOGRAPHS TAKEN 1984
CONTROLLING DATUM: NAD 83
PROJECTION: UTM
GRID: 1000-METER UNIVERSAL TRANSVERSE MERCATOR, ZONE 11
UTM GRID DECLINATION: OREGON, 17 30 WEST
HORIZONTAL DATUM: NATIONAL GEODESIC 1983 NORTH AMERICAN DATUM
To place on the predicted North American Datum of 1983,
move the projection lines as shown by dashed corner ticks
(19 meters north and 86 meters east)
There may be private inholdings within the boundaries of any
Federal or State reservations shown on this map.

SCALE 1:24 000
Kilometers 0 1 2
Miles 0 1 2

CONTOUR INTERVAL 40 FEET
To convert meters to feet multiply by 3.2808
To convert feet to meters multiply by 0.3048

ROAD LEGEND
Improved Road
Unimproved Road
Trail
Interstate Route
U S Route
State Route

QUADRANGLE LOCATION
OREGON

1	2	3
4	5	6
7	8	9

ADJOINING 7.5 QUADRANGLE NAMES:
1 Aldrich Gulch
2 Big Weasel Springs
3 Supple Butte
4 French Spring
5 French Spring
6 French Spring
7 Izee
8 Lewis Creek

PROVISIONAL MAP
Produced from original
manuscript drawings. Infor-
mation shown as of date of
photography.

THIS MAP COMPLIES WITH NATIONAL MAP ACCURACY STANDARDS
FOR SALE BY U.S. GEOLOGICAL SURVEY, D-NVER, COLORADO 80225 OR RESTON, VIRGINIA 22092

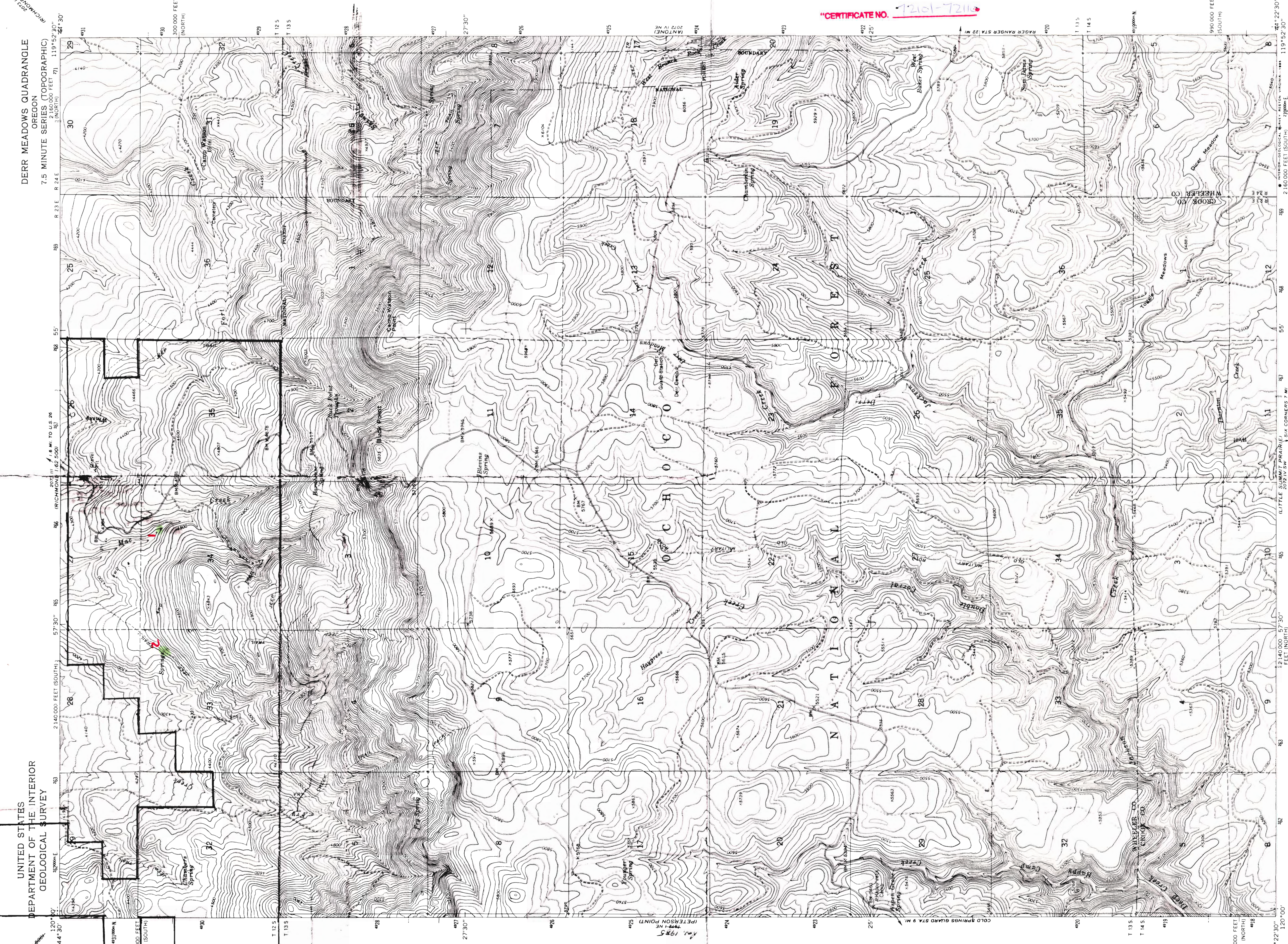
GRAYLOCK BUTTE, OREGON
PROVISIONAL EDITION 1990
44119-B4-TF-024

Izee

Apps. R-80892 & R-80902

148

UNITED STATES
DEPARTMENT OF THE INTERIOR
GEOLOGICAL SURVEY



DERR MEADOWS QUADRANGLE
OREGON
7.5 MINUTE SERIES (TOPOGRAPHIC)
2,160,000 FEET (EASTING)
119°52'30" WESTING

Application R-80892 & R-80902
Permit No.

"CERTIFICATE NO. 72101-72110"

Mapped, edited, and published by the Geological Survey
Control by USGS and NOS/NOAA
Topography by photogrammetric methods from aerial
photographs taken 1959. Field checked 1966
Polyconic projection. 1927 North American datum.
10,000-foot grids based on Oregon coordinate system,
north and south zones
1000-meter Universal Transverse Mercator grid ticks.
To place on the predicted North American Datum 1983
move the projection lines 19 meters north and
87 meters east as shown by dashed corner ticks
Fine red dashed lines indicate selected fence lines
There may be private inholdings within the boundaries of
the National or State Reservations shown on this map.



ROAD CLASSIFICATION
Unimproved dirt
Light-duty
DERR MEADOWS, OREG.
44119 09 1F 024
1966
PHOTOREVISED 1985
DMA, 2072 IV NW-SERIES 1985

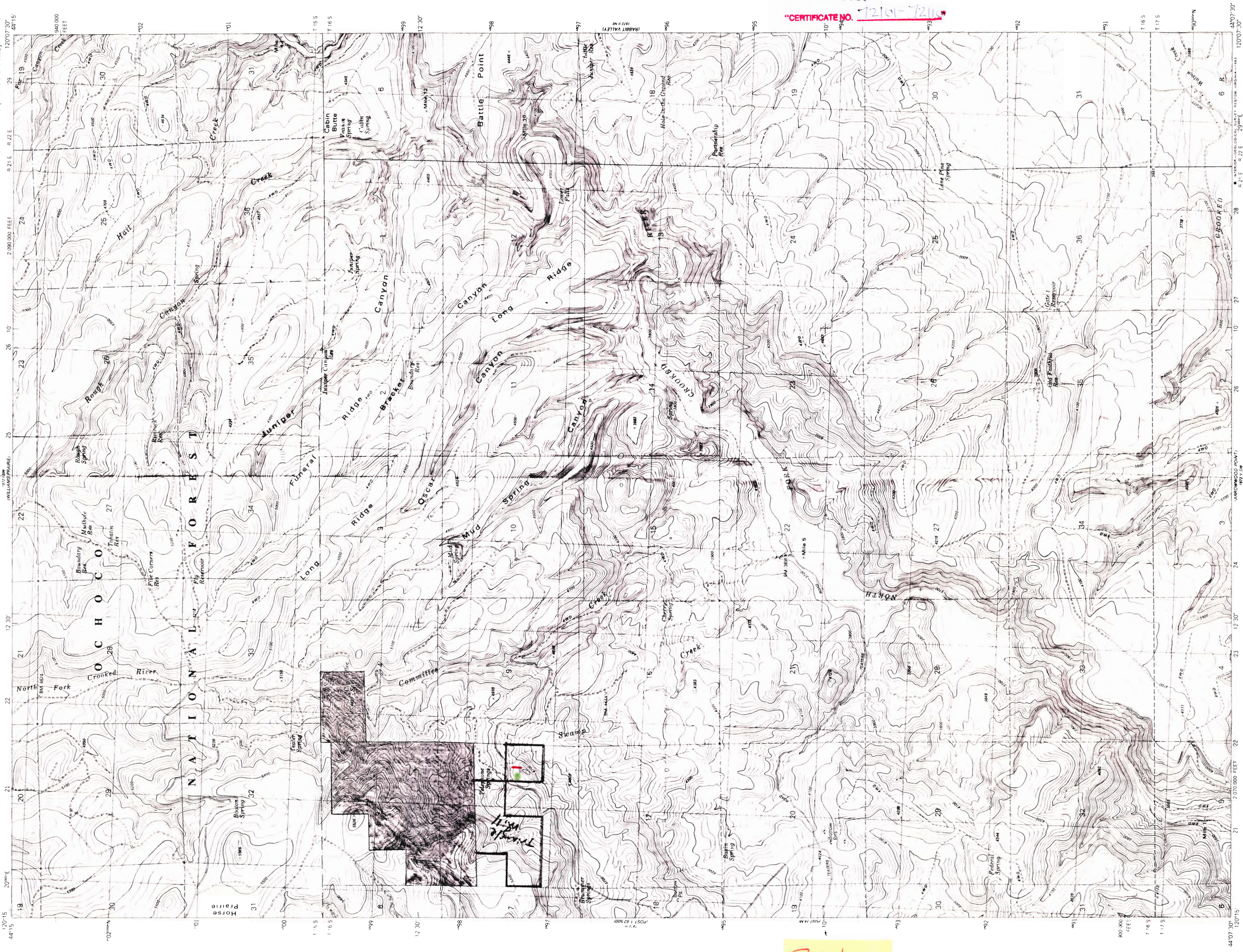
DEC 3 1984
WATER RESOURCES
SALEM, OREGON

Apps. R-80892 & R-80902

148

UNITED STATES
DEPARTMENT OF THE INTERIOR
GEOLOGICAL SURVEY

COMMITTEE CREEK QUADRANGLE
OREGON-CROOK CO.
7.5 MINUTE SERIES (TOPOGRAPHIC)



Application No. *R-80892 thru R-80902*
 Permit No. *72101-72111*
 "CERTIFICATE NO. *72101-72111*"

Mapped, edited, and published by the Geological Survey
 Control by USGS and NOS/NOAA
 Topography by photogrammetric methods from aerial photographs taken 1974. Field checked 1977. Map edited 1983.
 Projection and 10,000-foot grid ticks. Oregon coordinate system, south zone (Lambert conformal conic).
 1000-meter Universal Transverse Mercator grid, zone 10 1927 North American Datum.
 To place on the predicted North American Datum 1983, move the projection lines 19 meters north and 88 meters east as shown by dashed corner ticks.
 Fine red dashed lines indicate selected fence and field lines where generally visible on aerial photographs.
 This information is unclassified.
 There may be private inholdings within the boundaries of the National or State reservations shown on this map.

Scale: 1:24,000
 Contour Interval: 20 Feet
 National Geodetic Vertical Datum of 1929

Scale bars: 1 Mile, 1 Kilometer, 1000 Feet, 500 Feet, 200 Feet, 100 Feet, 50 Feet, 25 Feet, 10 Feet, 5 Feet, 2 Feet, 1 Foot, 0.5 Feet, 0.2 Feet, 0.1 Feet, 0.05 Feet, 0.02 Feet, 0.01 Feet

Legend:
 Primary highway: Light-duty road, hard or hard surface
 Secondary highway: Improved surface, hard surface
 Interstate Route: U.S. Route, State Route
 Light-duty road, hard or hard surface
 Improved surface
 Unimproved road
 Interstate Route
 U.S. Route
 State Route

Map of Oregon showing the location of the Committee Creek Quadrangle.

COMMITTEE CREEK, OREG.
 N4407 5' - W12007 57.5'
 1983
 DMA 1972 II NW-SERIES V892

*S. Ochocho
 Triangle
 Mill*

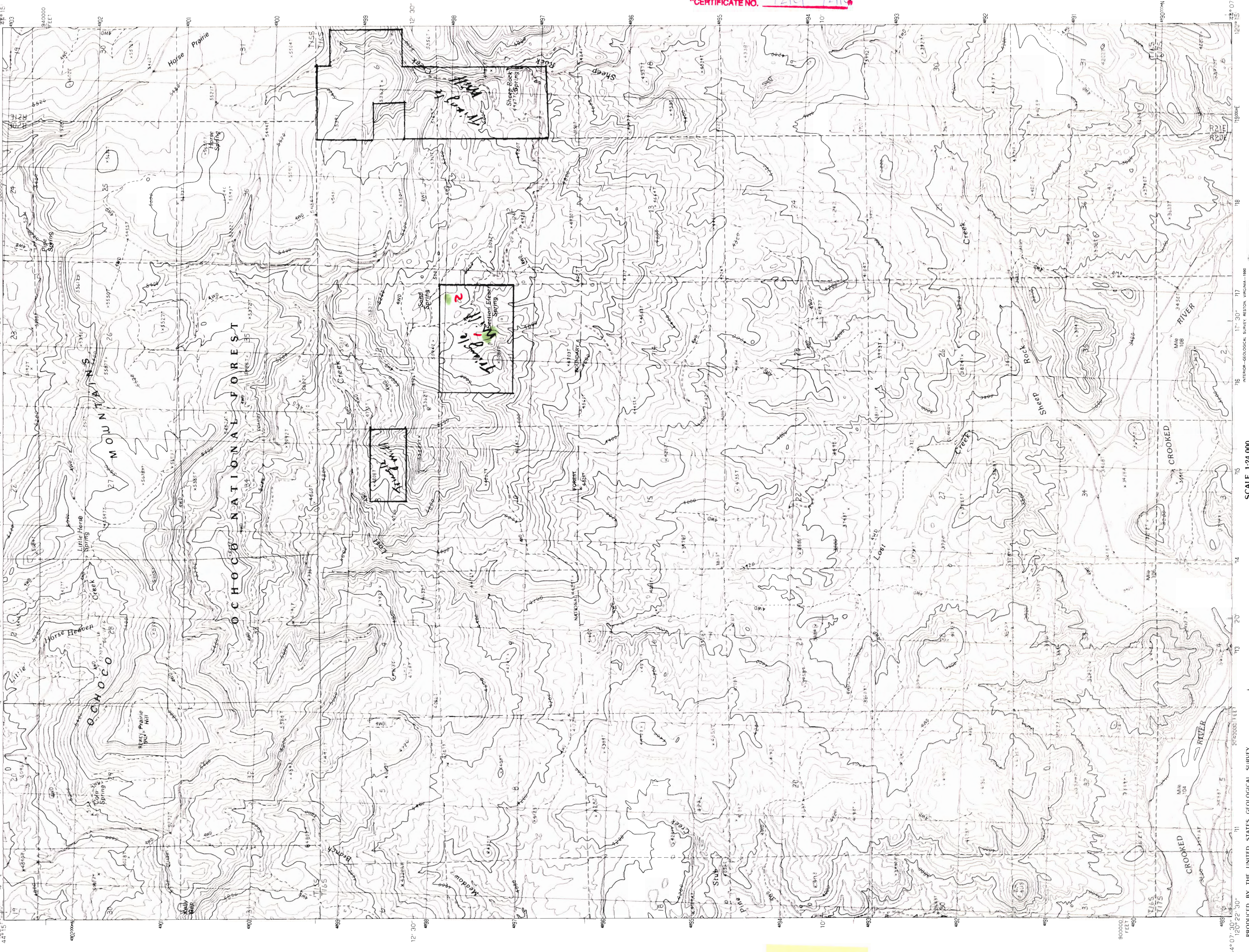
Apps. R-80892 & R-80902

DEC 30 1984
 WATER RESOURCES
 SALEM, OREGON

Application No. R-80892-K-80902
Permit No.

RECEIVED
DEC 30 1984
WATER RESOURCES DEPT.
SALEM, OREGON

CERTIFICATE NO. 72161-72162



PRODUCTION BY THE UNITED STATES GEOLOGICAL SURVEY
CONTROL FROM AERIAL PHOTOGRAPHS TAKEN, USGS AND NOS, NOAA
FIELD CHECKED, 1986; MAP EDITED, 1990
PROJECTION, U.S. NATIONAL TRANSVERSE MERCATOR CONIC
GRID, 10,000 FOOT STATE GRID TICS
UTM GRID DECLINATION, 1 52 EAST
1990 MAGNETIC NORTH DECLINATION, 1 52 EAST
HORIZONTAL DATUM, 1927 NORTH AMERICAN DATUM
To place on the predicted North American Datum of 1983,
move the projection lines as shown by dashed corner tie,
(20 meters north and 89 meters east)
There may be private inholdings within the boundaries of any
Federal or State reservations shown on this map

SCALE 1:24 000
KILOMETERS 0 1 2
METERS 0 100 200 300 400 500 600 700 800 900 1000
MILES 0 0.5 1 1.5 2 2.5 3 3.5 4 4.5 5 5.5 6 6.5 7 7.5 8 8.5 9 9.5 10

CONTOUR INTERVAL 40 FEET
SUPPLEMENTARY CONTOUR INTERVAL 20 FEET
To convert meters to feet multiply by 3.2808
To convert feet to meters multiply by .3048

ROAD LEGEND
Improved Road
Unimproved Road
Trail
Interstate Route
U. S. Route
State Route

QUADRANGLE LOCATION
OREGON

1	2	3	4	5	6	7	8
1	2	3	4	5	6	7	8

1 Cross Bldg
2 Local Min
3 W. Harris Prairie
4 Post
5 Horse Creek
6 Mile Deer Bldg
7 Drake Bldg
8 Arrowwood Point

ALSO INDICATED QUADRANGLE NAMES

PROVISIONAL MAP
Produced from original
manuscript drawings. Infor-
mation shown as of date of
field check.

THIS MAP COMPLETES WITH NATIONAL MAP ACCURACY STANDARDS
FOR SALE BY U.S. GEOLOGICAL SURVEY, D-NVER, COLORADO 80225, G-S RESTON, VIRGINIA 22092

148

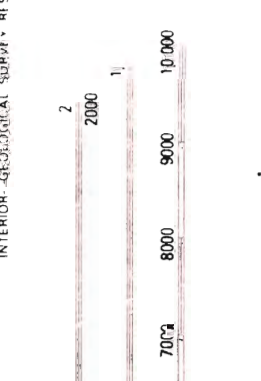
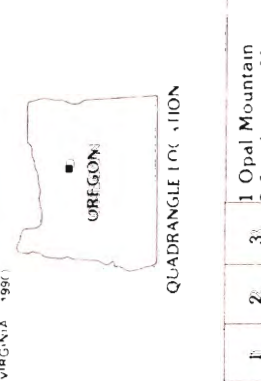
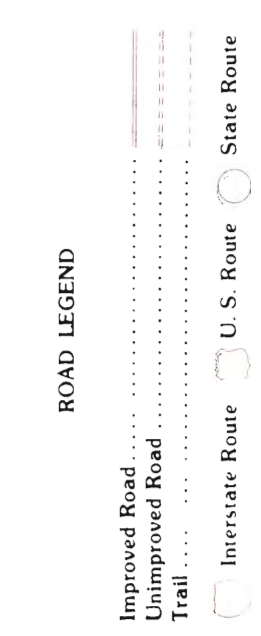
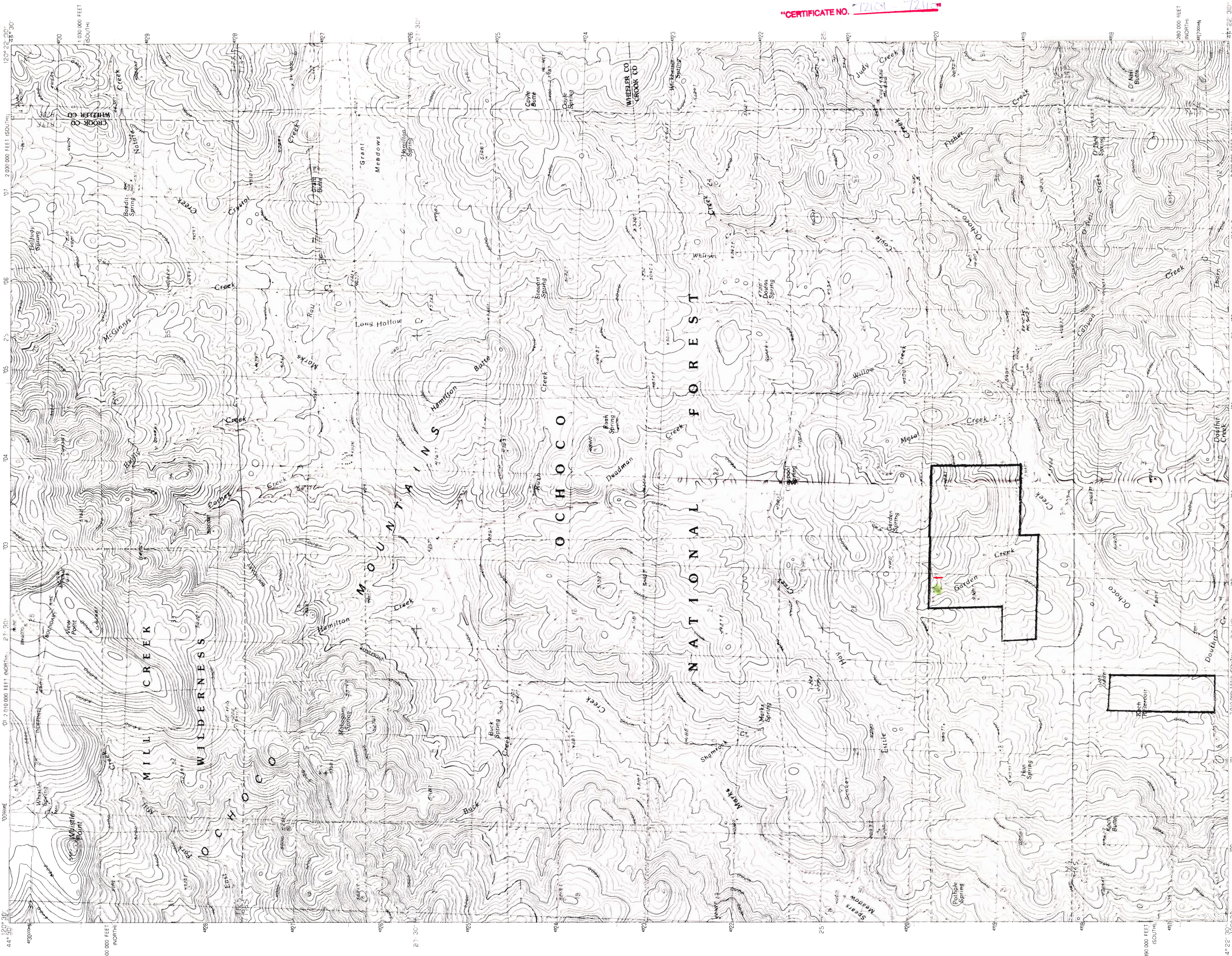
Triangle
Mill

Apps. R-80892 & R-80902

Application No. R-80892 - R-80902
Permit No.

CERTIFICATE NO. 7201 - 7210

DEC 30 1994
JAMES LEHFI
OREGON



QUADRANGLE (1:100,000)

1	2	3	4	5	6	7	8
1	2	3	4	5	6	7	8

1 Ochal Mountain
2 Stephenson Mtn
3 Lawson Mountain
4 Ochal Mtn
5 Ochal Bluff
6 Ochal Bluff
7 Ochal Bluff
8 Ochal Mountain

SCALE 1:24,000
KILOMETERS 0 1 2
METERS 0 1000 2000
MILES 0 0.5 1 1.5 2

CONTOUR INTERVAL 40 FEET
To convert meters to feet multiply by 3.2808
To convert feet to meters multiply by 0.3048

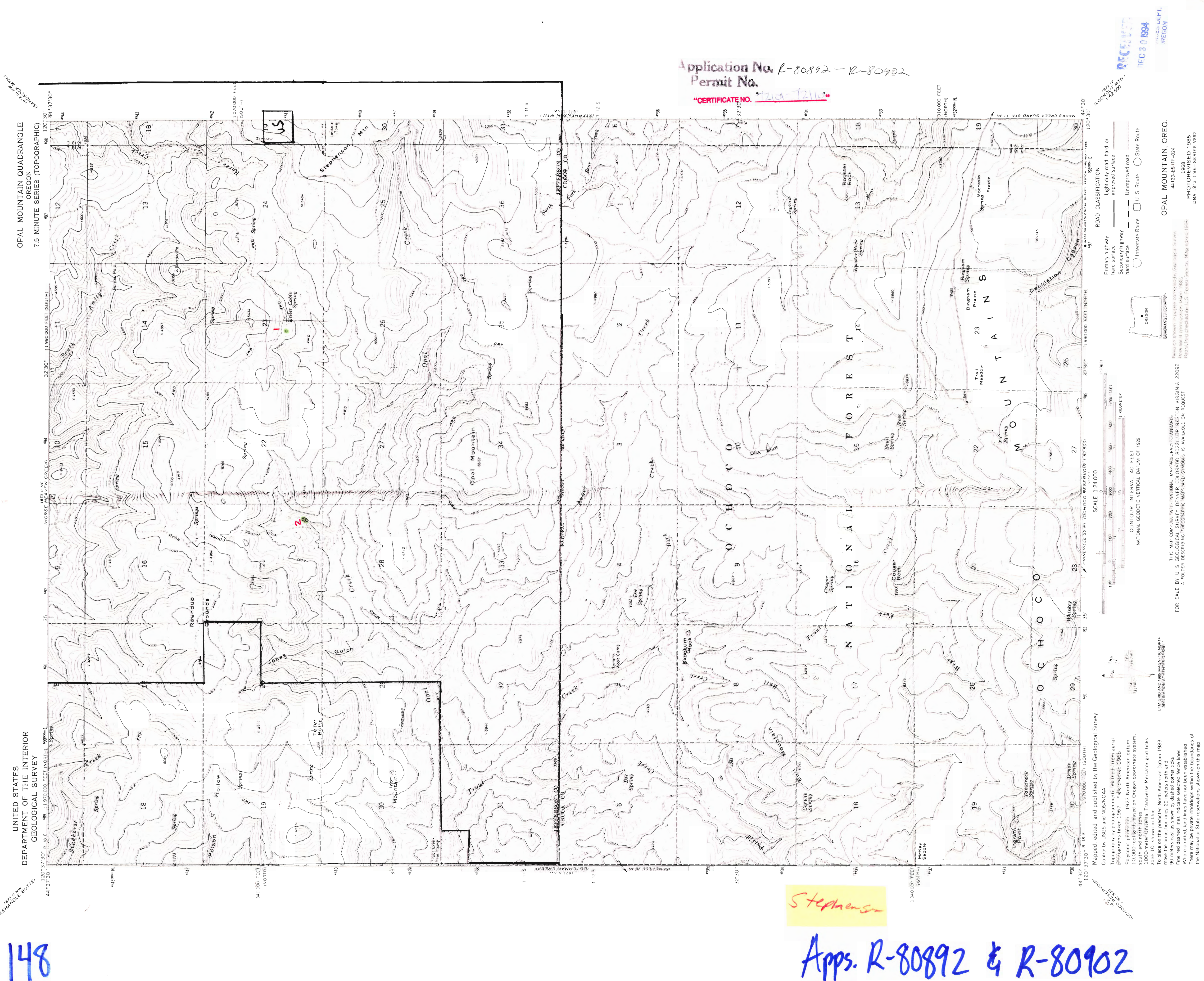
PROVISIONAL MAP
Produced from original
manuscript drawings. Infor-
mation shown as of date of
field check.

PRODUCED BY THE UNITED STATES GEOLOGICAL SURVEY
COMPILED FROM AERIAL PHOTOGRAPHS TAKEN IN 1964 AND 1984
FIELD CHECKED IN 1986. MAP EDITED IN 1990
VERTICAL DATUM: NATIONAL GEODETIC DATUM OF 1929
HORIZONTAL DATUM: CONFORMAL TO THE NORTH AMERICAN DATUM OF 1983
To place the projection lines as shown by dashed corner ticks
move the projection lines as shown by dashed corner ticks
(20 meters north and 89 meters east)
There may be private inholdings within the boundaries of any
Federal or State reservations shown on this map

THIS MAP COMPLIES WITH NATIONAL MAP ACCURACY STANDARDS
FOR SALE BY U.S. GEOLOGICAL SURVEY
DENVER, COLORADO 80225 OR RESTON, VIRGINIA 22092

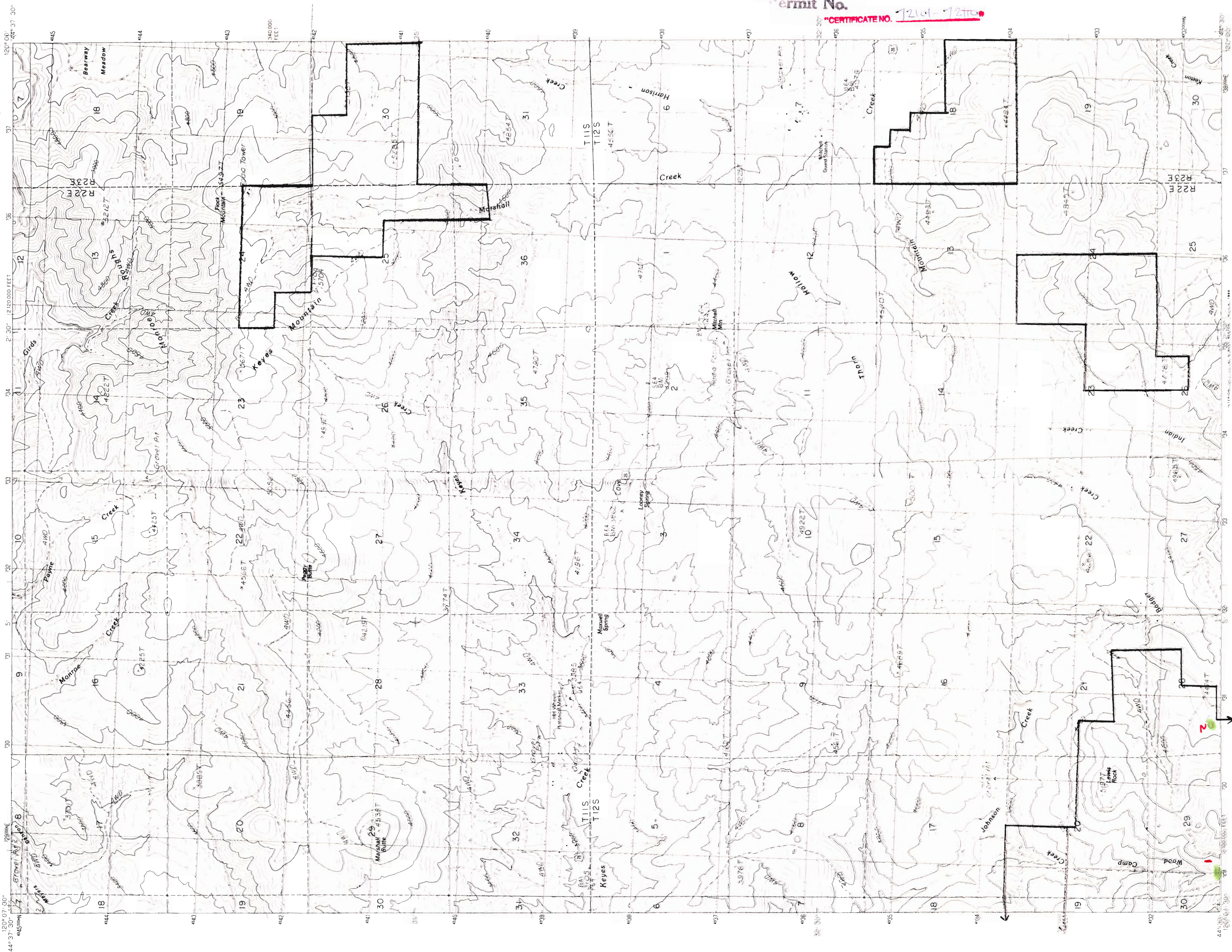
148

Application No. R-80892 - R-80902
Permit No.
"CERTIFICATE NO. 1210-7210"



Stephens

Apps. R-80892 & R-80902



Application No. R-80892 - R-80902
Permit No.

CERTIFICATE NO. 12101-12102

PRODUCED BY THE UNITED STATES GEOLOGICAL SURVEY
CONTROLLED BY AERIAL PHOTOGRAPHS TAKEN 1963
LIMITED REVISION FROM AERIAL PHOTOGRAPHS TAKEN 1965
PRODUCTION CHECKED 1985 MAP EDITED 1986
GRID 100-METER UNIVERSAL TRANSVERSE MERCATOR ZONE 10
UTM GRID DECLINATION 1980 10° 00' 00" W
MAGNETIC NORTH DECLINATION 1980 19° 00' 00" W
HORIZONTAL DATUM WITHIN 1927 NORTH AMERICAN DATUM
To place on the predicted North American Datum of 1983,
move the projection lines as shown by dashed corner ticks
19 meters north and 88 meters east!
Any Federal and State Road boundaries within the boundaries of
this map are shown as solid lines. All other boundaries are
Public Land Survey System is shown as published in 1966
and verified or supplemented in 1986.
* Attribution made between houses, barns, and other buildings

SCALE: 1:24 000



CONTOUR INTERVAL 40 FEET
SUPPLEMENTARY CONTOUR INTERVAL 20 FEET
To convert meters to feet multiply by 3.2808
To convert feet to meters multiply by 0.3048

QUADRANGLE LOCATION

1	2	3	4	5	6	7	8	9
10	11	12	13	14	15	16	17	18
19	20	21	22	23	24	25	26	27
28	29	30	31	32	33	34	35	36

ROAD LEGEND
Improved Road
Unimproved Road
Trail
Interstate Route
U.S. Route
State Route

PROVISIONAL MAP
Produced from original
manuscript drawings. Infor-
mation shown as of date of
field check.

KEYES MTN., OREG.
PROVISIONAL EDITION 1988
44120-ET-024

THIS MAP COMPLIES WITH NATIONAL MAP ACCURACY STANDARDS
FOR SALE BY U.S. GEOLOGICAL SURVEY, DENVER, COLORADO 80225, OR RESTON, VIRGINIA 22092



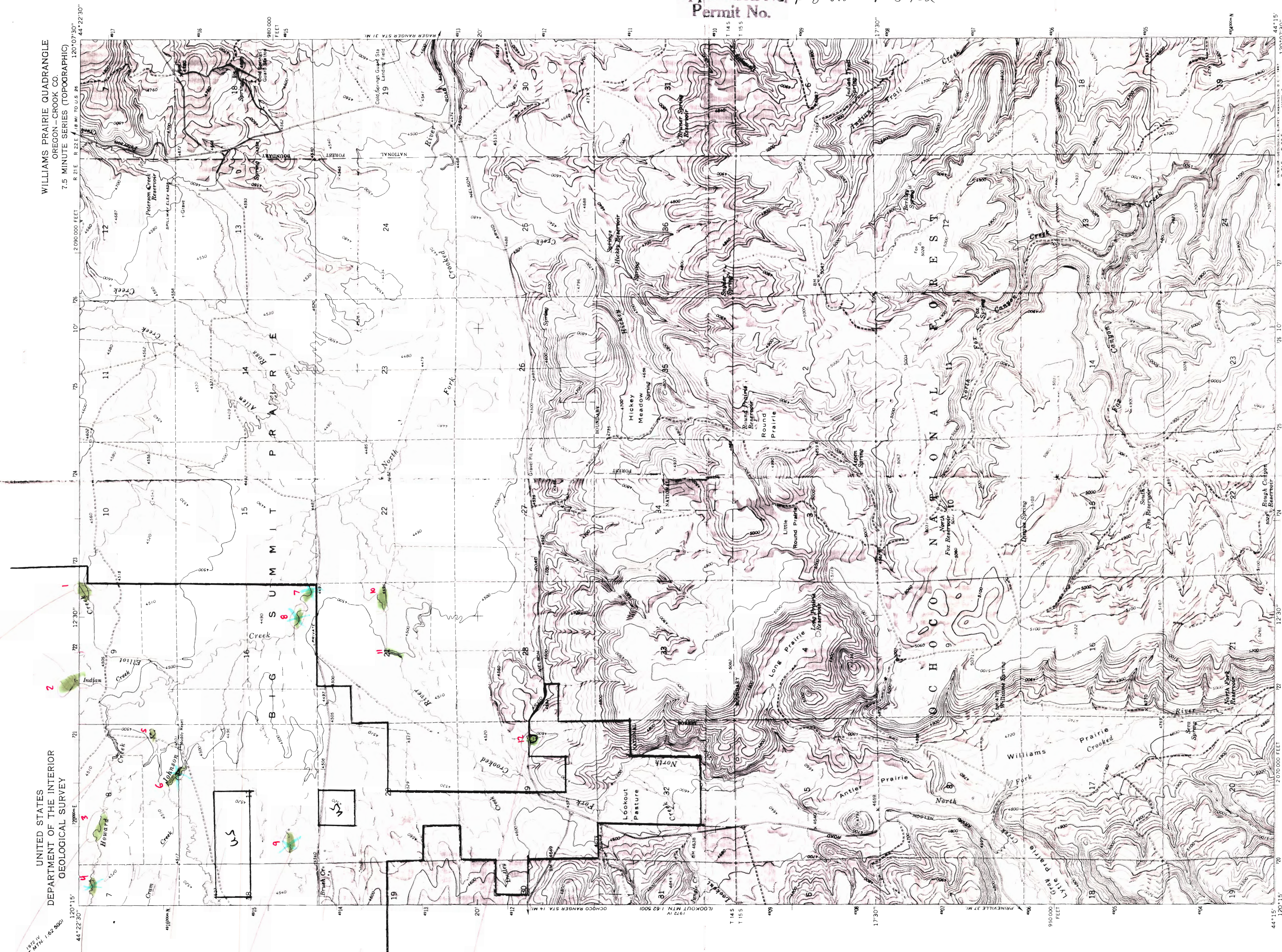
148

UNITED STATES
DEPARTMENT OF THE INTERIOR
GEOLOGICAL SURVEY

WILLIAMS PRAIRIE QUADRANGLE
OREGON—CROOK CO.
7.5 MINUTE SERIES (TOPOGRAPHIC)

CERTIFICATE NO. 72161-7216

Application No. R-80892 - R-80902
Permit No.



Maped, edited, and published by the Geological Survey
Control by USGS and USC&GS
Topography by photogrammetric methods from aerial
photographs taken 1959 and planimetric surveys 1965
Polyconic projection. 1927 North American datum.
10,000-foot grid based on Oregon coordinate system.
1000-meter Universal Transverse Mercator grid ticks,
zone 10, shown in blue.
Fine red dashed lines indicate selected fence lines.

UTM GRID AND 1965 MAGNETIC NORTH
DECLINATION AT CENTER OF SHEET

1:250,000
1:50,000
1:10,000
1:5,000
1:2,500
1:1,250
1:625

SCALE 1:24,000
1:12,000
1:6,000
1:3,000
1:1,500
1:750
1:375

CONTOUR INTERVAL 20 FEET
DOTTED LINES REPRESENT 10-FOOT CONTOURS
DAVUM IS MEAN SEA LEVEL

ROAD CLASSIFICATION
Unimproved dirt
Light duty

QUADRANGLE LOCATION
OREGON

WILLIAMS PRAIRIE, OREG.
N4415—W12007.5/7.5
1965
AMS 1972 1 SW—SERIES V892

FOR SALE BY U.S. GEOLOGICAL SURVEY, NATIONAL MAP ACQUISITION STATION
A FOLDER DESCRIBING TOPOGRAPHIC MAPS AND SYMBOLS IS AVAILABLE ON REQUEST

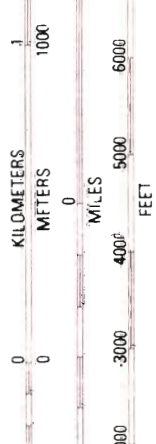
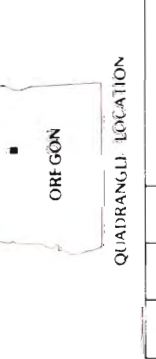
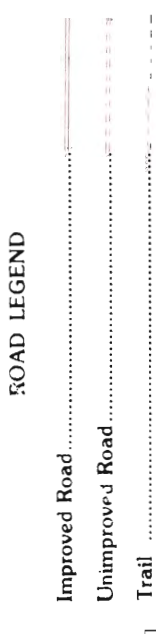
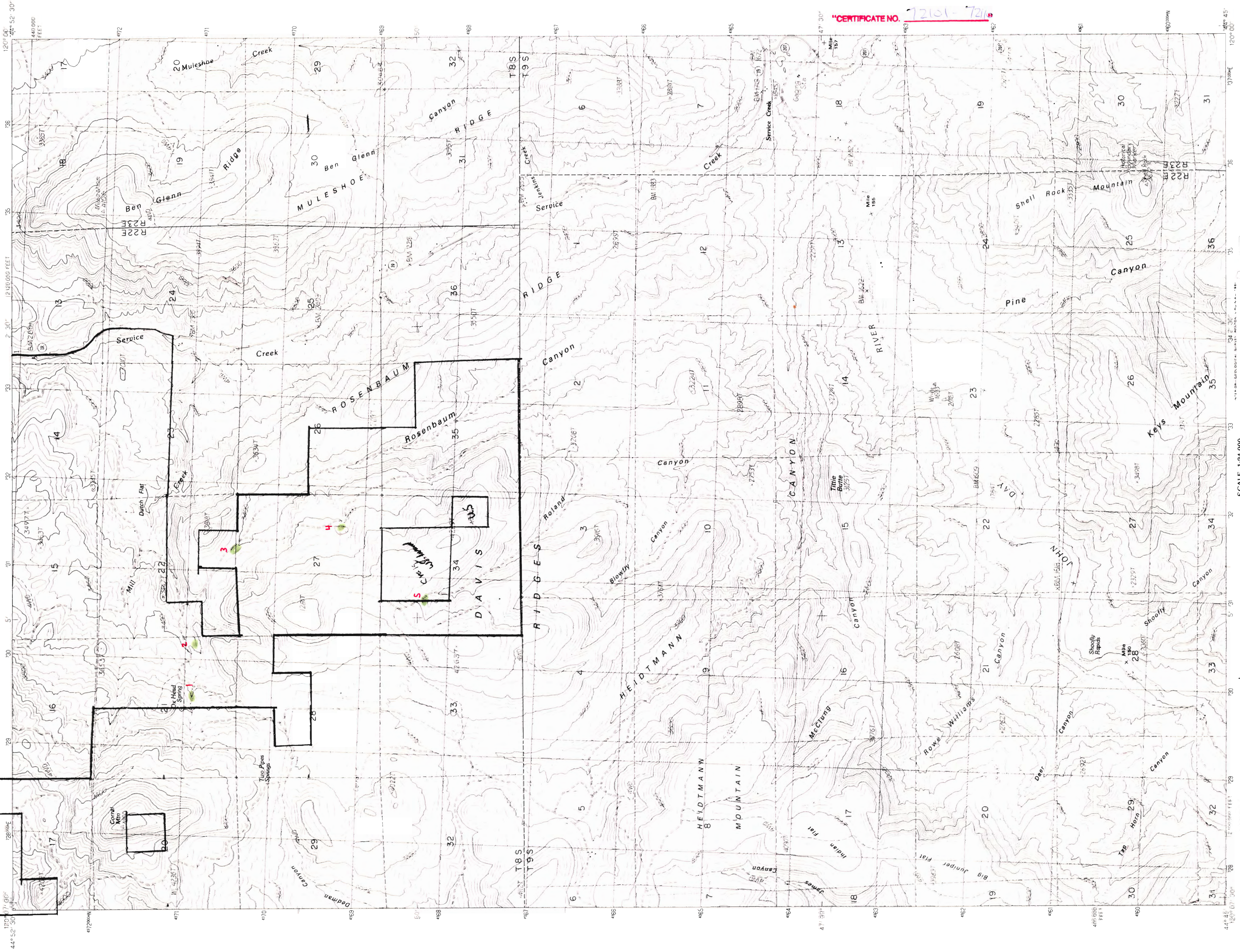
THIS MAP COMPLETES WITH NATIONAL MAP ACQUISITION STATION
FOR SALE BY U.S. GEOLOGICAL SURVEY, DENVER, COLORADO 80225, OR WASHINGTON, D. C. 20242

Apps. R-80892 & R-80902

Application R-80892 - L-80902
Permit No.

"CERTIFICATE NO. 72151-7216"

DEC 30 1984
WATER RESOURCES DIVISION
SALEM, OREGON



PROVISIONAL MAP
Produced from original
manuscript drawings. Infor-
mation shown as of date of
field check.

1	2	3	4	5	6	7	8
1	2	3	4	5	6	7	8

PRODUCED BY THE UNITED STATES GEOLOGICAL SURVEY
CONTRIBUTION FROM AERIAL PHOTOGRAPHS TAKEN
FREE CHECKED FOR ACCURACY BY THE GEOLOGICAL SURVEY
FIELD CHECKED FOR ACCURACY BY THE GEOLOGICAL SURVEY
PRODUCTION FROM AERIAL PHOTOGRAPHS TAKEN
1985
GEOLOGICAL SURVEY, WASHINGTON, D.C. 20508
U.S. GEOLOGICAL SURVEY, WASHINGTON, D.C. 20508
NATIONAL GEOMETRIC VERTICAL DATUM OF 1929
HORIZONTAL DATUM: NORTH AMERICAN DATUM OF 1983
To convert meters to feet multiply by 3.2808
To convert feet to meters multiply by 0.3048
This map conforms with NATIONAL MAP ACCURACY STANDARDS
FOR SALE BY U.S. GEOLOGICAL SURVEY, DENVER, COLORADO 80225, OR RESTON, VIRGINIA 22092
44120-G1-TF-024
PROVISIONAL EDITION 1987
SERVICE CREEK, OREG.

148

Apps. R-80892 & R-80902