

FINAL PROOF SURVEY CASCADE MEADOW RANCH

Application no. G-11775

Permit no. G-11117

17 OCTOBER 1993

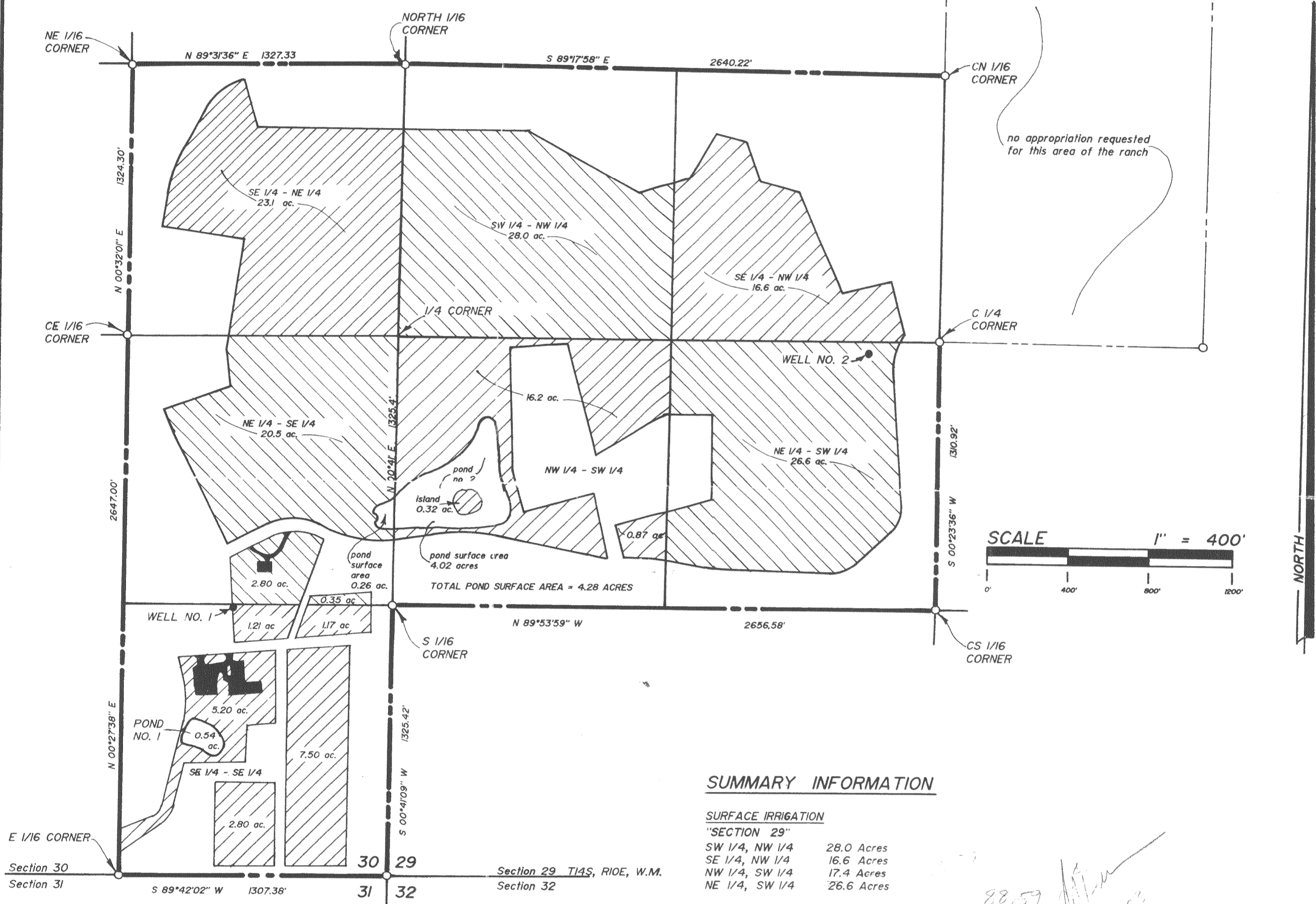
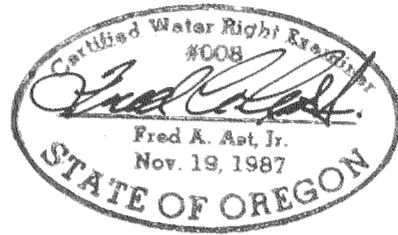
PROPERTY IS SITUATED IN SECTIONS 29 AND 30, T14S, R10E, W. M.,
DESCHUTES COUNTY, OREGON

USE OF WATER

1. IRRIGATION
2. MAINTENANCE OF TWO PONDS FOR AESTHETIC PURPOSES

SOURCE: TWO WELLS
DISTRIBUTION: UNDERGROUND PIPELINE SYSTEM

NOTE: THIS MAP IS FOR THE PURPOSE OF IDENTIFYING THE LOCATION OF WATER RIGHT. IT IS NOT INTENDED TO PROVIDE INFORMATION RELATIVE TO THE LOCATION OF PROPERTY OWNERSHIP BOUNDARY LINES.



SUMMARY INFORMATION

SURFACE IRRIGATION

"SECTION 29"	
SW 1/4, NW 1/4	28.0 Acres
SE 1/4, NW 1/4	16.6 Acres
NW 1/4, SW 1/4	17.4 Acres
NE 1/4, SW 1/4	26.6 Acres
TOTAL FOR SECTION 29	88.6 Acres
"SECTION 30"	
SE 1/4, NE 1/4	23.1 Acres
NE 1/4, SE 1/4	23.65 Acres
SE 1/4, SE 1/4	17.88 Acres
TOTAL FOR SECTION 30	64.6 Acres
COMBINED TOTAL	153.2 ACRES

POND INFORMATION

"POND NO. 1" IS SITUATED IN THE SE 1/4 OF THE SE 1/4 OF SECTION 30, T14S, R10E, W.M.
SURFACE AREA = 0.54 Acres.
STORAGE CAPACITY = 2.3 Acre Ft.
WATER IS SUPPLIED TO THIS POND VIA AN UNDERGROUND PIPELINE.
WATER SOURCE: "WELL NO. 1"

"POND NO. 2" IS SITUATED IN THE NE 1/4 OF THE SE 1/4 OF SECTION 30, AND THE NW 1/4 OF THE SW 1/4 SECTION 29, T14S, R10E, W.M., DESCHUTES COUNTY OREGON.
TOTAL SURFACE AREA = 4.28 Acres
STORAGE CAPACITY = 30.8 Acre Ft.
WATER IS SUPPLIED TO THIS POND VIA AN UNDERGROUND PIPELINE.
WATER SOURCE: "WELL NO. 1"

WELL LOCATIONS

"Well No. 1" is situated in the SE 1/4 of the SE 1/4 of Section 30, T14S, R10E, W.M., and bears South, 1338 ft. and West, 791 ft. from the East Quarter Corner of Section 30

"Well No. 2" is situated in the NE 1/4 of the SW 1/4 of Section 29, T14S, R10E, W.M., and bears South, 76 ft. and East, 2302 ft. from the West Quarter Corner of Section 29

FRED A. AST, Jr. & ASSOCIATES
351 W. Cascade St.- P. O. BOX 751
SISTERS, OREGON ----- 97759
PHONE : (503) 549-7851