

FINAL PROOF MAP
FOR
PERMIT 48968
L&L FARMS & TONY AMSTAD
UMATILLA COUNTY



PRIMARY IRRIGATION

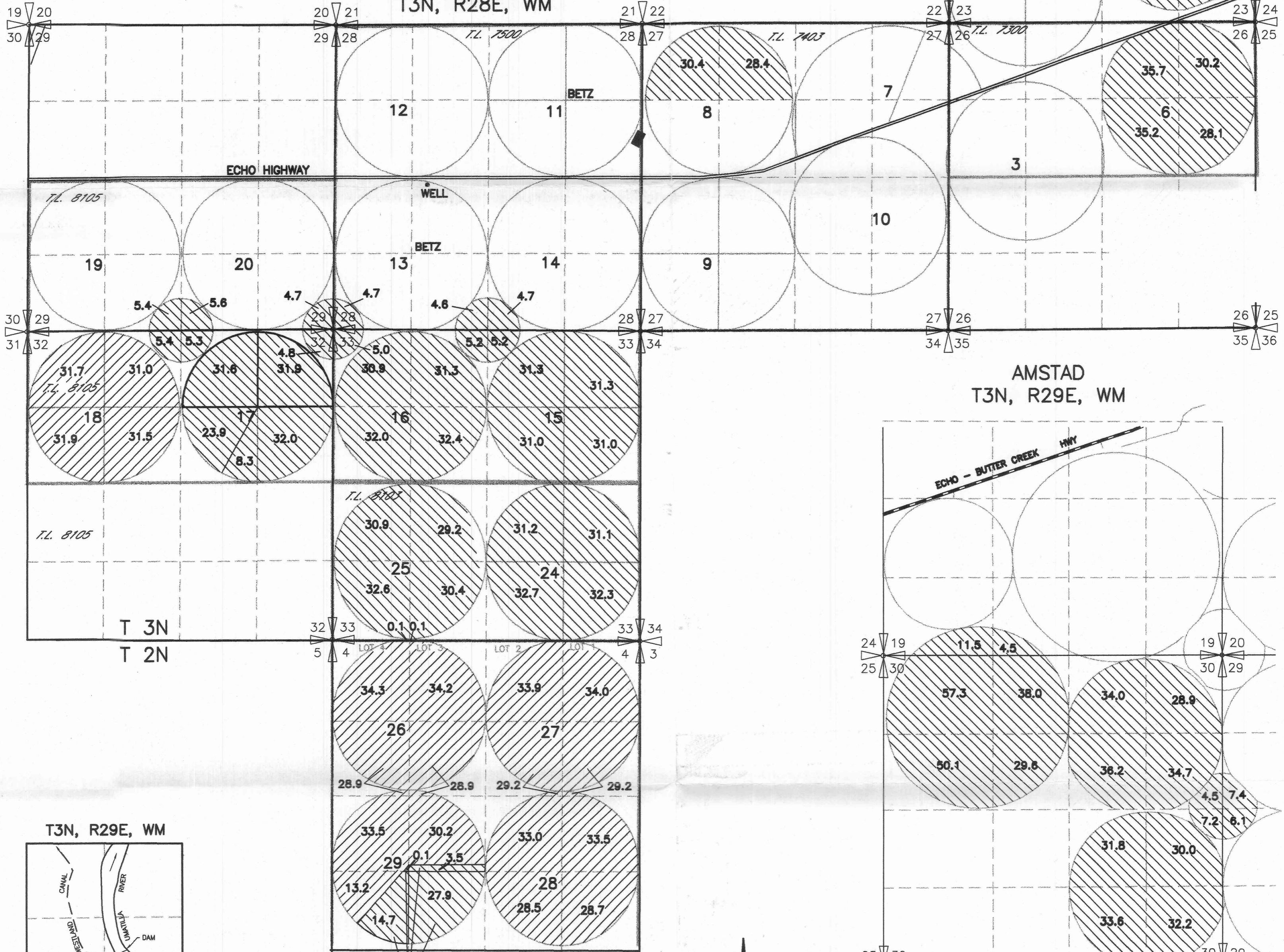


SUPPLEMENTAL IRRIGATION

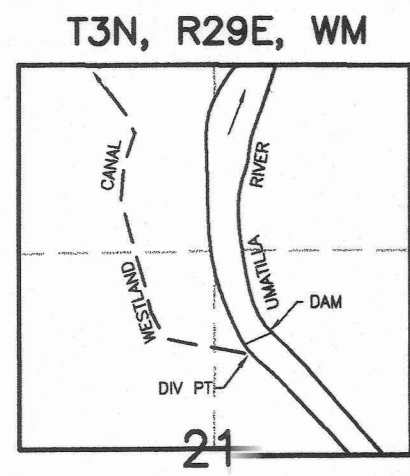
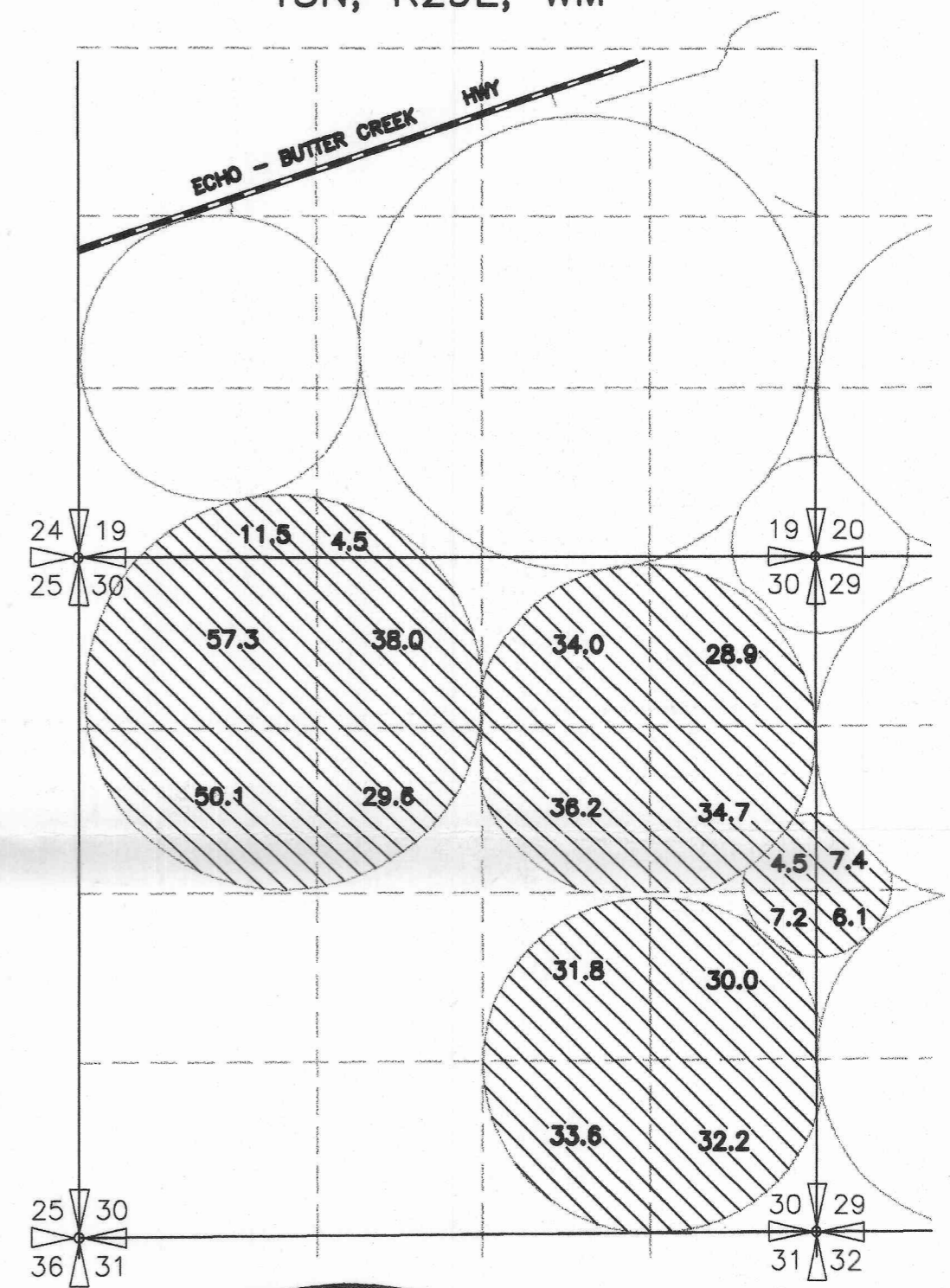
Tony Amstad
TONY AMSTAD 7-14-04 DATE

Robert Levy
ROBERT LEVY July 7/20/04 DATE

L&L FARMS
T3N, R28E, WM



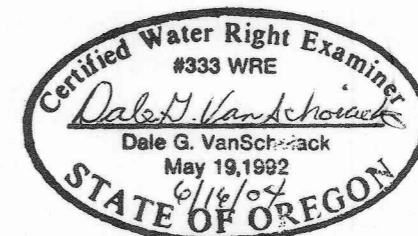
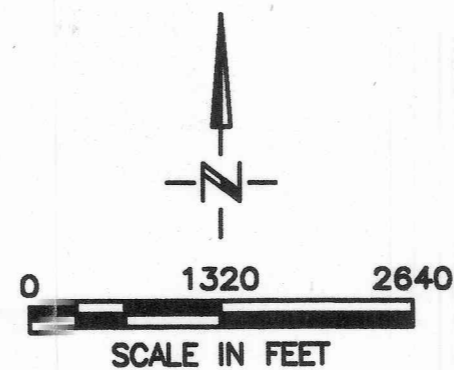
AMSTAD
T3N, R29E, WM



DIV PT LCT N.76°45'56"E. 2913.19'
FROM W.1/4 COR. SEC 21

NOTE: THE PURPOSE OF THIS MAP IS TO IDENTIFY THE APPROXIMATE LOCATION OF THE WATER RIGHT. IT IS NOT INTENDED TO PROVIDE INFORMATION RELATIVE TO THE LOCATION OF PROPERTY OWNERSHIP BOUNDARY LINES.

COBU MAP # 0141



RECEIVED

JUL 23 2004

WATER RESOURCES DEPT
SALEM, OREGON

DRAWING: H:\CAD\AG\3522\005\3522ALFP.dwg
PRINTED BY: rogerw on 06/16/04 12:52 PM