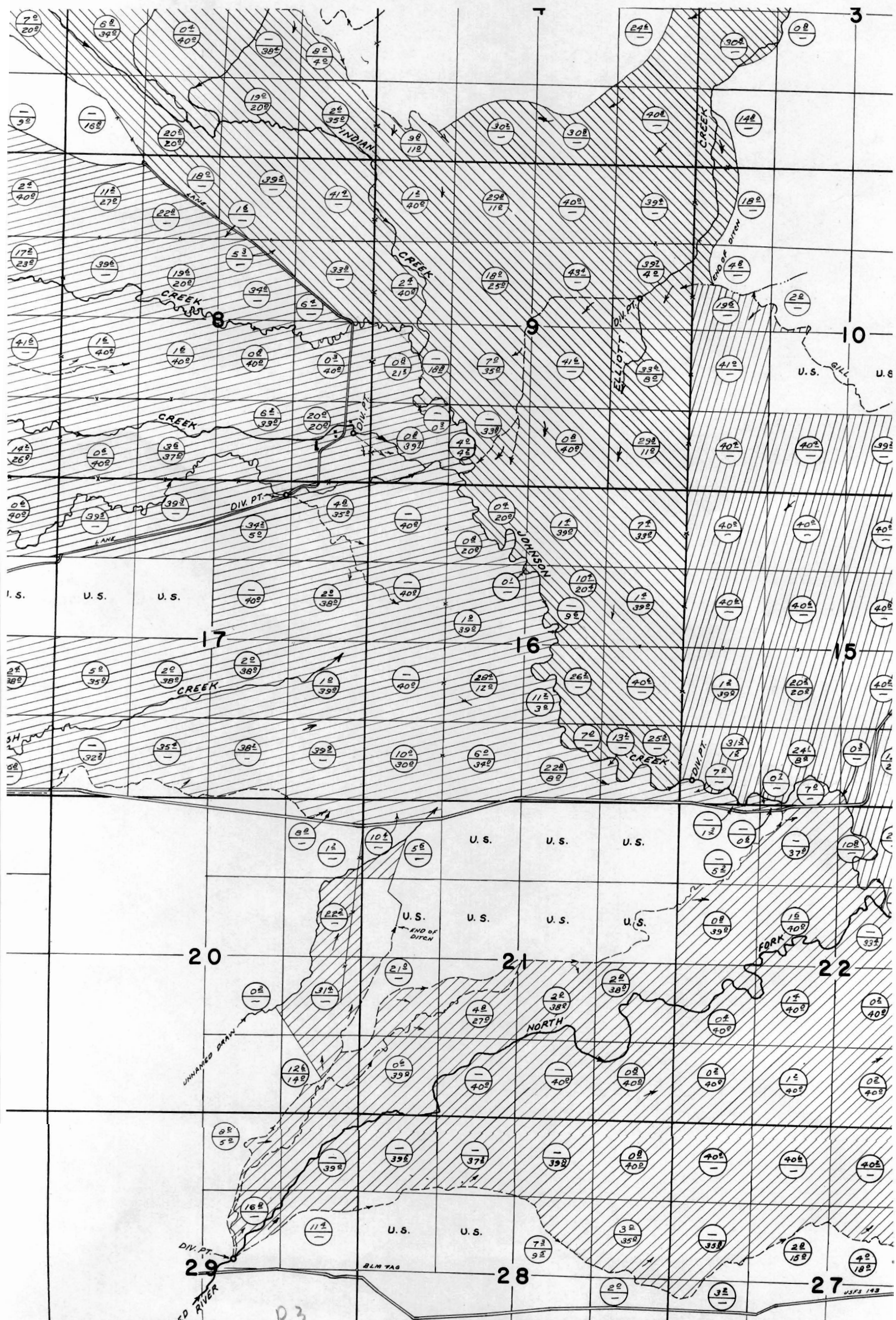
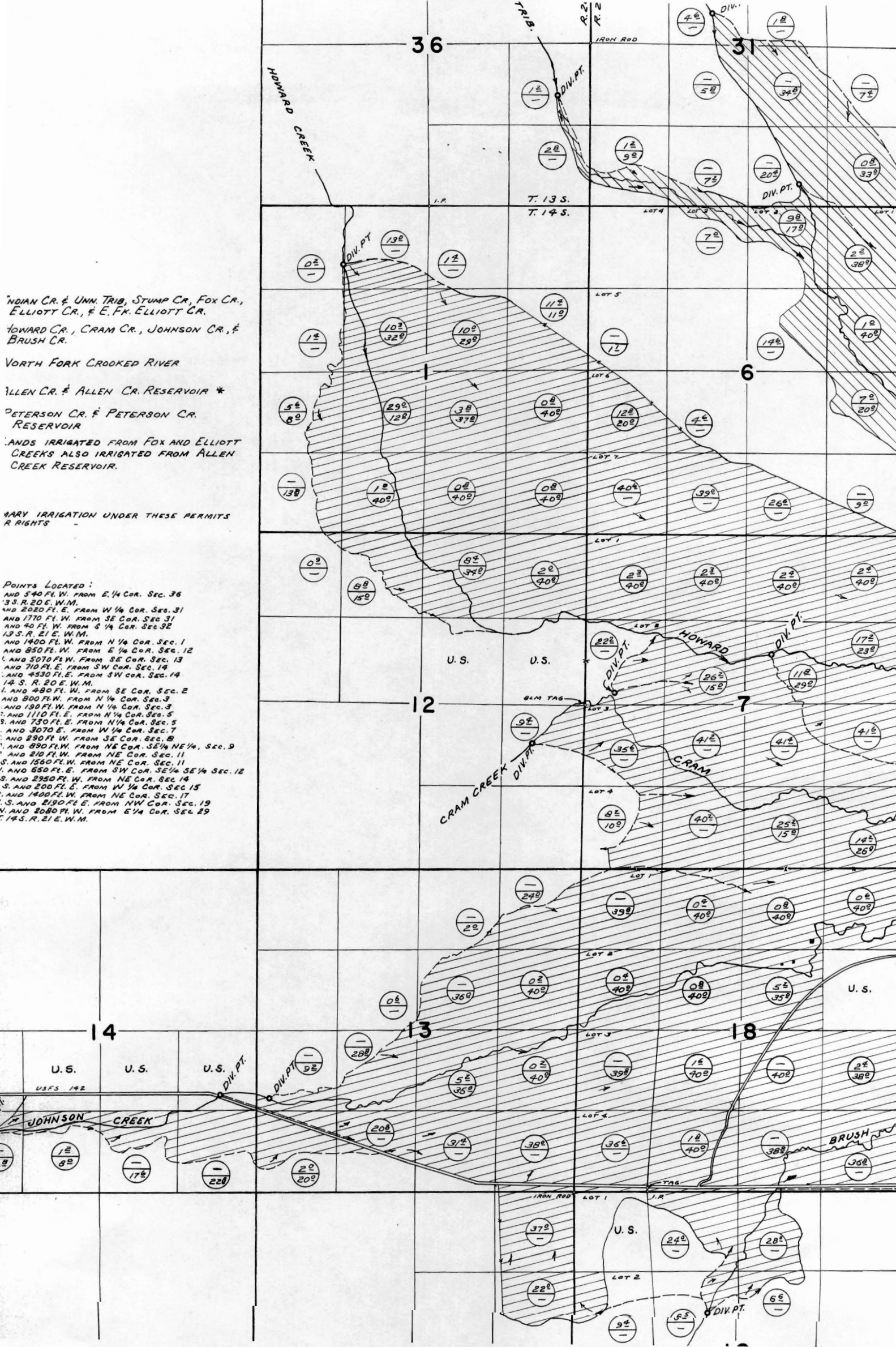


P.2





INDIAN CR. & UNN. TRIB, STUMP CR., FOX CR.,  
ELLIOTT CR., & E. FK. ELLIOTT CR.  
TOWARD CR., CRAM CR., JOHNSON CR., &  
BRUSH CR.  
VORTH FORK CROOKED RIVER  
ALLEN CR. & ALLEN CR. RESERVOIR \*  
PETERSON CR. & PETERSON CR.  
RESERVOIR  
LANDS IRRIGATED FROM FOX AND ELLIOTT  
CREEKS ALSO IRRIGATED FROM ALLEN  
CREEK RESERVOIR.

WATER IRRIGATION UNDER THESE PERMITS  
RESERVE RIGHTS

POINTS LOCATED:  
AND 540 FT. W. FROM E 1/4 COR. SEC. 36  
3 S. R. 20 E. W. M.  
AND 2020 FT. E. FROM W 1/4 COR. SEC. 31  
AND 1770 FT. W. FROM SE COR. SEC. 31  
AND 40 FT. W. FROM S 1/4 COR. SEC. 32  
13 S. R. 21 E. W. M.  
AND 1400 FT. W. FROM N 1/4 COR. SEC. 1  
AND 850 FT. W. FROM E 1/4 COR. SEC. 12  
AND 5070 FT. W. FROM SE COR. SEC. 13  
AND 710 FT. E. FROM SW COR. SEC. 14  
AND 4530 FT. E. FROM SW COR. SEC. 14  
14 S. R. 20 E. W. M.  
AND 480 FT. W. FROM SE COR. SEC. 2  
AND 800 FT. W. FROM N 1/4 COR. SEC. 3  
AND 190 FT. W. FROM N 1/4 COR. SEC. 3  
AND 1110 FT. E. FROM N 1/4 COR. SEC. 5  
AND 730 FT. E. FROM N 1/4 COR. SEC. 5  
AND 3070 E. FROM W 1/4 COR. SEC. 7  
AND 290 FT. W. FROM SE COR. SEC. 8  
AND 890 FT. W. FROM NE COR. SE 1/4 NE 1/4, SEC. 9  
AND 210 FT. W. FROM NE COR. SEC. 11  
AND 1560 FT. W. FROM NE COR. SEC. 11  
AND 650 FT. E. FROM SW COR. SE 1/4 SE 1/4 SEC. 12  
AND 2950 FT. W. FROM NE COR. SEC. 14  
AND 200 FT. E. FROM W 1/4 COR. SEC. 15  
AND 1400 FT. W. FROM NE COR. SEC. 17  
AND 2150 FT. E. FROM NW COR. SEC. 19  
AND 2080 FT. W. FROM E 1/4 COR. SEC. 29  
14 S. R. 21 E. W. M.

