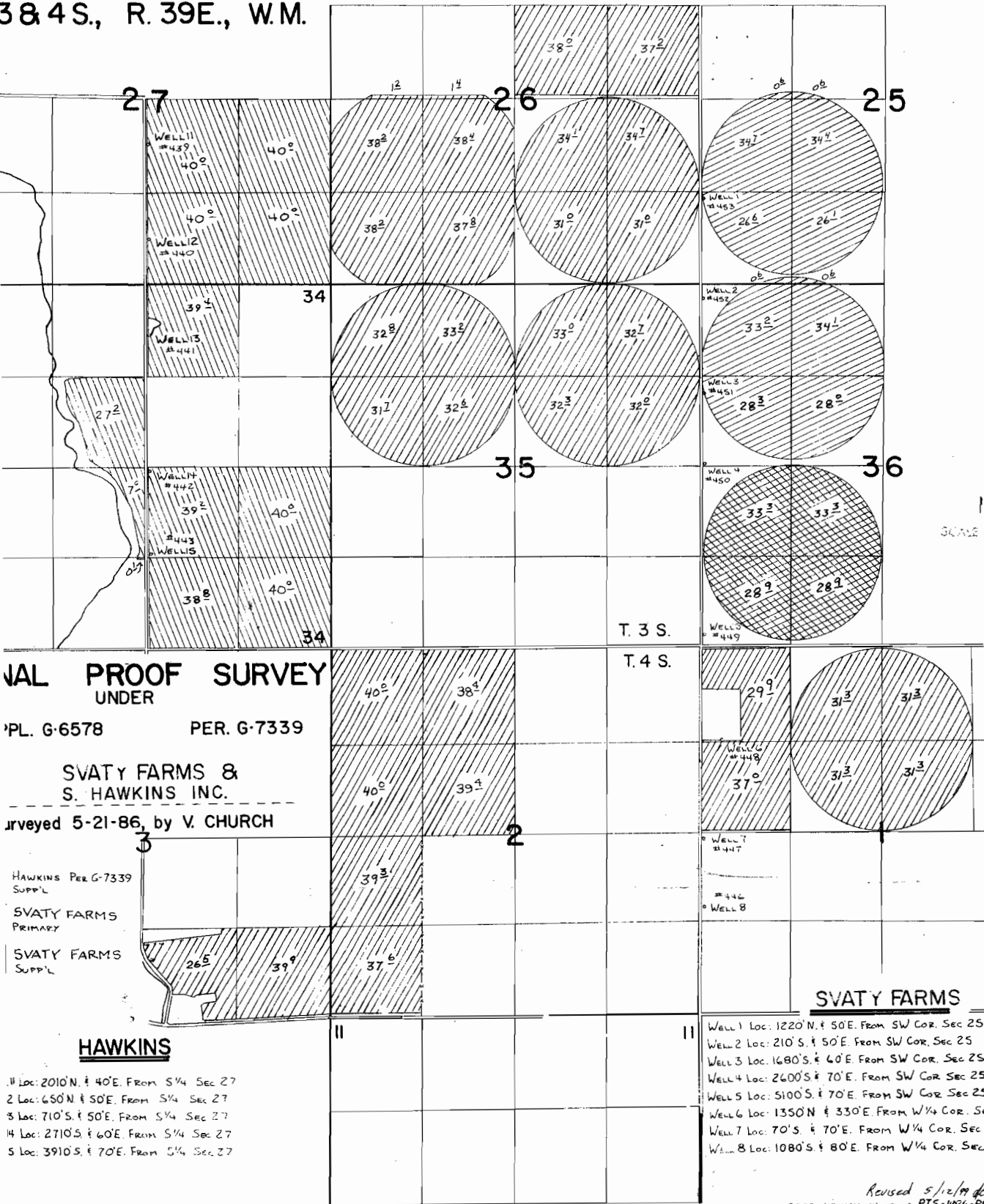


38 & 4 S., R. 39 E., W.M.



PLAT PROOF SURVEY
UNDER
PL. G-6578 PER. G-7339

SVATY FARMS & S. HAWKINS INC.
Surveyed 5-21-86, by V. CHURCH

HAWKINS PER G-7339
SUPPL.
SVATY FARMS
PRIMARY
SVATY FARMS
SUPPL.

HAWKINS

- 1 Loc: 2010'N. & 40'E. From S 1/4 Sec 27
- 2 Loc: 650'N & 50'E. From S 1/4 Sec 27
- 3 Loc: 710'S. & 50'E. From S 1/4 Sec 27
- 4 Loc: 2710'S. & 60'E. From S 1/4 Sec 27
- 5 Loc: 3910'S. & 70'E. From S 1/4 Sec 27

SVATY FARMS

- Well 1 Loc: 1220'N. & 50'E. From SW Cor. Sec 25
- Well 2 Loc: 210'S. & 50'E. From SW Cor. Sec 25
- Well 3 Loc: 1680'S. & 60'E. From SW Cor. Sec 25
- Well 4 Loc: 2600'S. & 70'E. From SW Cor. Sec 25
- Well 5 Loc: 5100'S. & 70'E. From SW Cor. Sec 25
- Well 6 Loc: 1350'N & 330'E. From W 1/4 Cor. Sec 26
- Well 7 Loc: 70'S. & 70'E. From W 1/4 Cor. Sec 26
- Well 8 Loc: 1080'S. & 80'E. From W 1/4 Cor. Sec 26

Revised 5/12/89 dca
2782, AIR-1MM-44,79,77, PTS-1486-PA