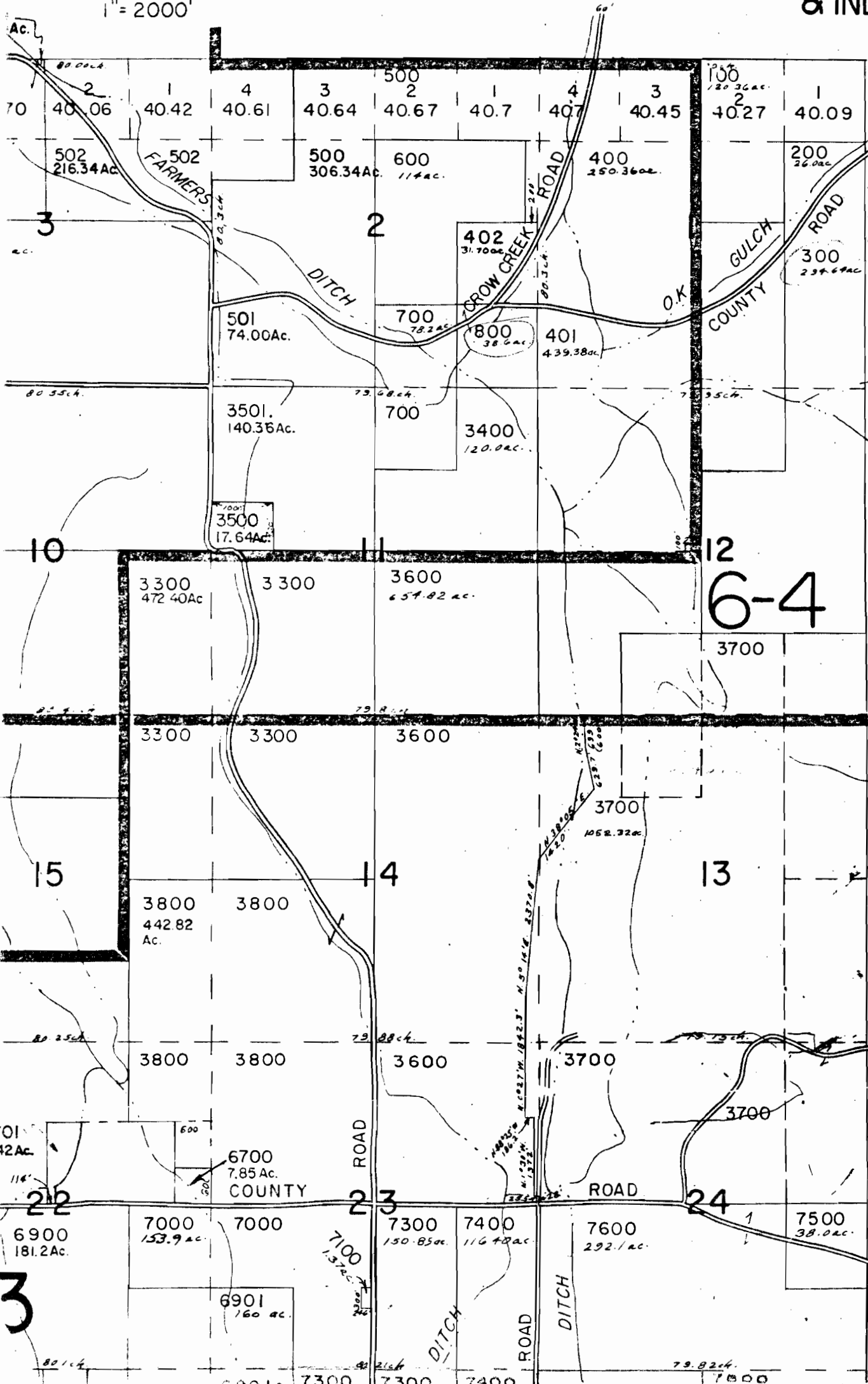


117° 07' 30" 2870000 FEET 492 493 5' 49

1" = 2000'



- CANCELLED NO. 5800
- 5900
 - 7200
 - 9200
 - 9600
 - 9601
 - 9602
 - 9603
 - 9604
 - 9605
 - 9606
 - 10800
 - 5501
 - 5502
 - 5503
 - 5504
 - 5600
 - 5601
 - 3701
 - 3702
 - 3703
 - 3704
 - 3705
 - 3706
 - 4503
 - 10901
 - 5700
 - 6000 THRU
 - 6013
 - 6100 THRU
 - 6104
 - 6200 THRU
 - 6207
 - 8203
 - 2100
 - 2401
 - 5507
 - 1405
 - 5505
 - 5506
 - 5508
 - 5511
 - 5512
 - 5202
 - 6702
 - 6703
 - 4704
 - 2403
 - 8905
 - 8906

SEE MAP 2S 46

2601
DETAIL
Sec. 17
Beg. S 617.33'
E 1283.64' from
NW Cor. Section