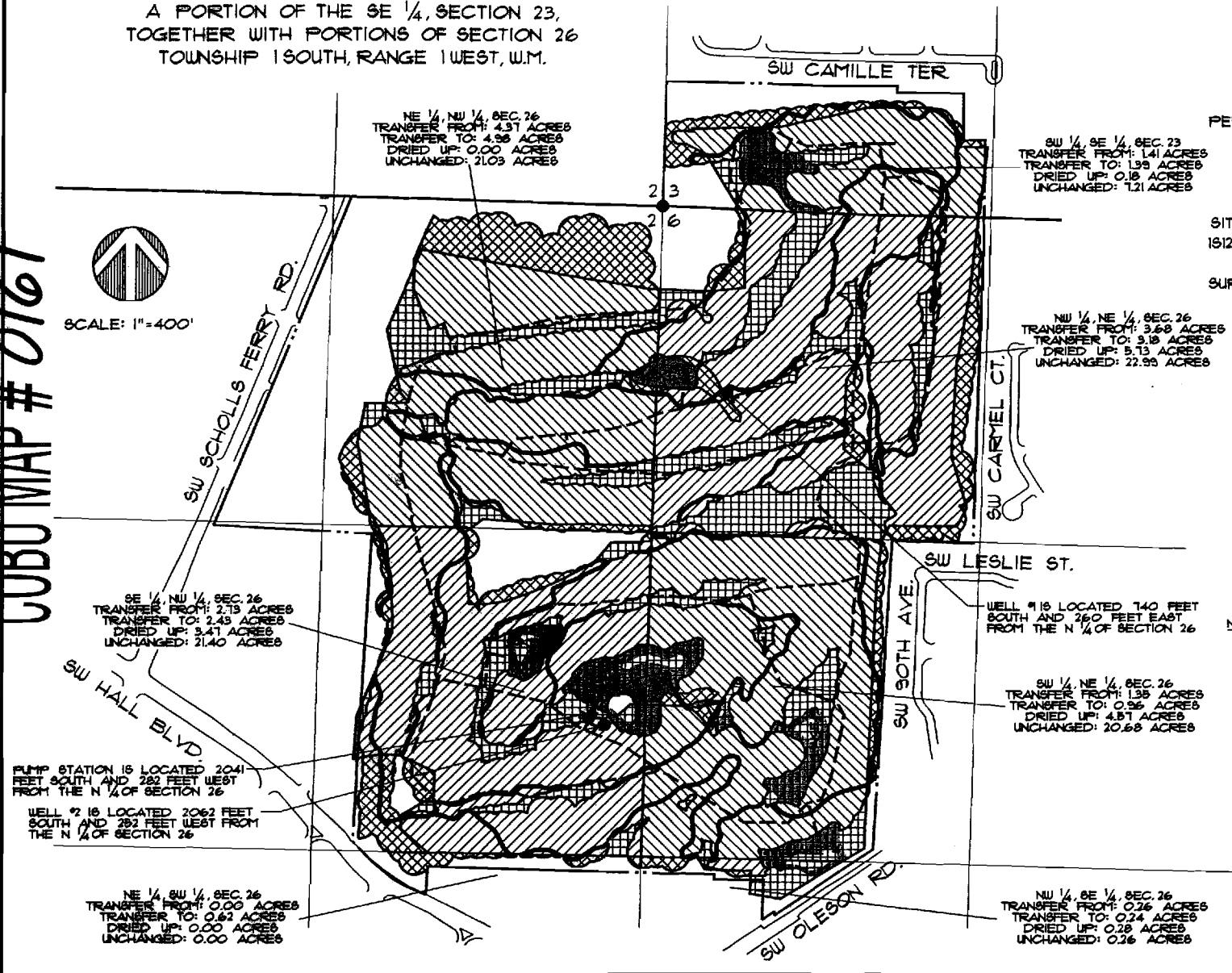


A PORTION OF THE SE 1/4, SECTION 23,
TOGETHER WITH PORTIONS OF SECTION 26
TOWNSHIP 1 SOUTH, RANGE 1 WEST, W.M.

COBU MAP # 0161



SCALE: 1"=400'



NE 1/4, NW 1/4, SEC. 26
TRANSFER FROM: 4.37 ACRES
TRANSFER TO: 4.98 ACRES
DRIED UP: 0.00 ACRES
UNCHANGED: 21.03 ACRES

SW 1/4, SE 1/4, SEC. 23
TRANSFER FROM: 1.41 ACRES
TRANSFER TO: 1.98 ACRES
DRIED UP: 0.18 ACRES
UNCHANGED: 1.21 ACRES

NW 1/4, NE 1/4, SEC. 26
TRANSFER FROM: 3.68 ACRES
TRANSFER TO: 3.18 ACRES
DRIED UP: 5.13 ACRES
UNCHANGED: 22.93 ACRES

SE 1/4, NW 1/4, SEC. 26
TRANSFER FROM: 2.13 ACRES
TRANSFER TO: 2.43 ACRES
DRIED UP: 3.41 ACRES
UNCHANGED: 21.40 ACRES

WELL #1 IS LOCATED 140 FEET
SOUTH AND 260 FEET EAST
FROM THE N 1/4 OF SECTION 26

SW 1/4, NE 1/4, SEC. 26
TRANSFER FROM: 1.35 ACRES
TRANSFER TO: 0.96 ACRES
DRIED UP: 4.81 ACRES
UNCHANGED: 20.68 ACRES

PUMP STATION IS LOCATED 2041
FEET SOUTH AND 282 FEET WEST
FROM THE N 1/4 OF SECTION 26

WELL #2 IS LOCATED 2062 FEET
SOUTH AND 282 FEET WEST FROM
THE N 1/4 OF SECTION 26

NE 1/4, SW 1/4, SEC. 26
TRANSFER FROM: 0.00 ACRES
TRANSFER TO: 0.62 ACRES
DRIED UP: 0.00 ACRES
UNCHANGED: 0.00 ACRES

NW 1/4, SE 1/4, SEC. 26
TRANSFER FROM: 0.26 ACRES
TRANSFER TO: 0.24 ACRES
DRIED UP: 0.28 ACRES
UNCHANGED: 0.26 ACRES

**CLAIM OF
BENEFICIAL USE MAP
REDTAIL GOLF COURSE**

TRANSFER T-1321
(ALSO, SEE APPLICATION S-80118,
PERMIT 51944, AND APPLICATION R-80117,
PERMIT R-11635)
IN THE NAME OF
THE CITY OF PORTLAND,
PARKS AND RECREATION
SITUATED IN TAX LOTS 151W23DC-04200,
151260000100, 151260000200, T1S, R1W, W.M.,
WASHINGTON COUNTY, OREGON
SURVEY COMPLETED FEBRUARY 4, 2004
BY DAN A. BUTTS, CURE
FOR CITY OF PORTLAND
PARKS AND RECREATION

- LEGEND:**
- SECTION LINE
 - 1/4, 1/4 SECTION LINE
 - - - PROPERTY LINE
 - - - IRRIGATION MAINLINE
 - UNCHANGED PLACE OF USE (HATCHURE ANGLE CHANGES BY SECTIONAL SUBDIVISION)
 - TRANSFER FROM AREAS
 - TRANSFER TO AREAS

NOTES: NOTE THAT THE MAP SUBMITTED WITH THE APPLICATION REFERENCED ABOVE CALLS FOR THE LOCATION OF WELL #1 AS 130 FEET SOUTH & 280 FEET EAST AND WELL #2 AS 2030 FEET SOUTH & 210 FEET WEST FROM THE NORTH 1/4 CORNER, SECTION 26.
LAKE 6 WAS AN EXISTING LAKE AT THE TIME OF THE ABOVE REFERENCED APPLICATION AND IS NOT A PART OF THE SUBSEQUENT PERMIT.



EXPIRATION DATE: 12/31/05

THIS MAP IS TO IDENTIFY A PROPOSED WATER RIGHT LOCATION. IT IS NOT TO BE USED TO LOCATE PROPERTY BOUNDARIES.

RECEIVED
MAR 31 2005
WATER RESOURCES DEPT
SALEM, OREGON