

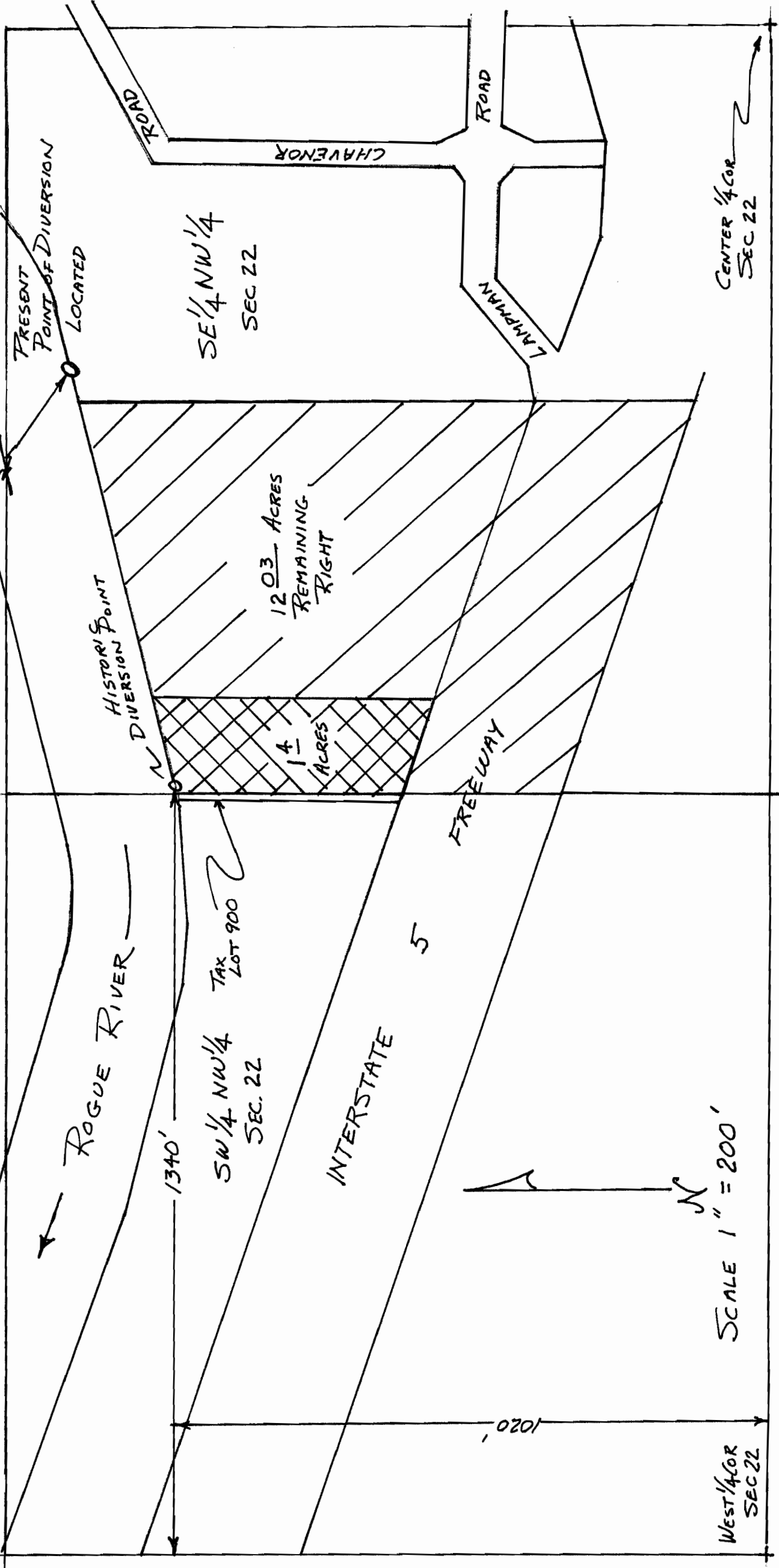
superceding

RECEIVED
JAN 11 2005
WATER RESOURCES DEPT
GRANTS PASS, OR

TRANSFERED LAND
REMAINING RIGHT

T. 36 S., R. 3 W., W.M.
SECTION 22

N 55° W T-8064
2508 NW 1/4 COR
TO SEC 22
ELMA RAE GOLDMAN
POINT OF DIVERSION
TRANSFER



West 1/4 COR
SEC 22

SCALE 1" = 200'

CENTER 1/4 COR
SEC 22

1020'

1340'

INTERSTATE 5

FREEWAY

HISTORIC POINT
DIVERSION

12.03 ACRES
REMAINING
RIGHT

4
ACRES

TAX
LOT 900

SW 1/4 NW 1/4
SEC. 22

SE 1/4 NW 1/4
SEC 22

PRESENT
POINT OF DIVERSION
LOCATED

ROAD

CHAVEMOR
ROAD

ROAD

LAMPMAN
ROAD

ROGUE RIVER