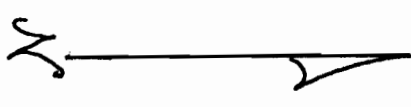
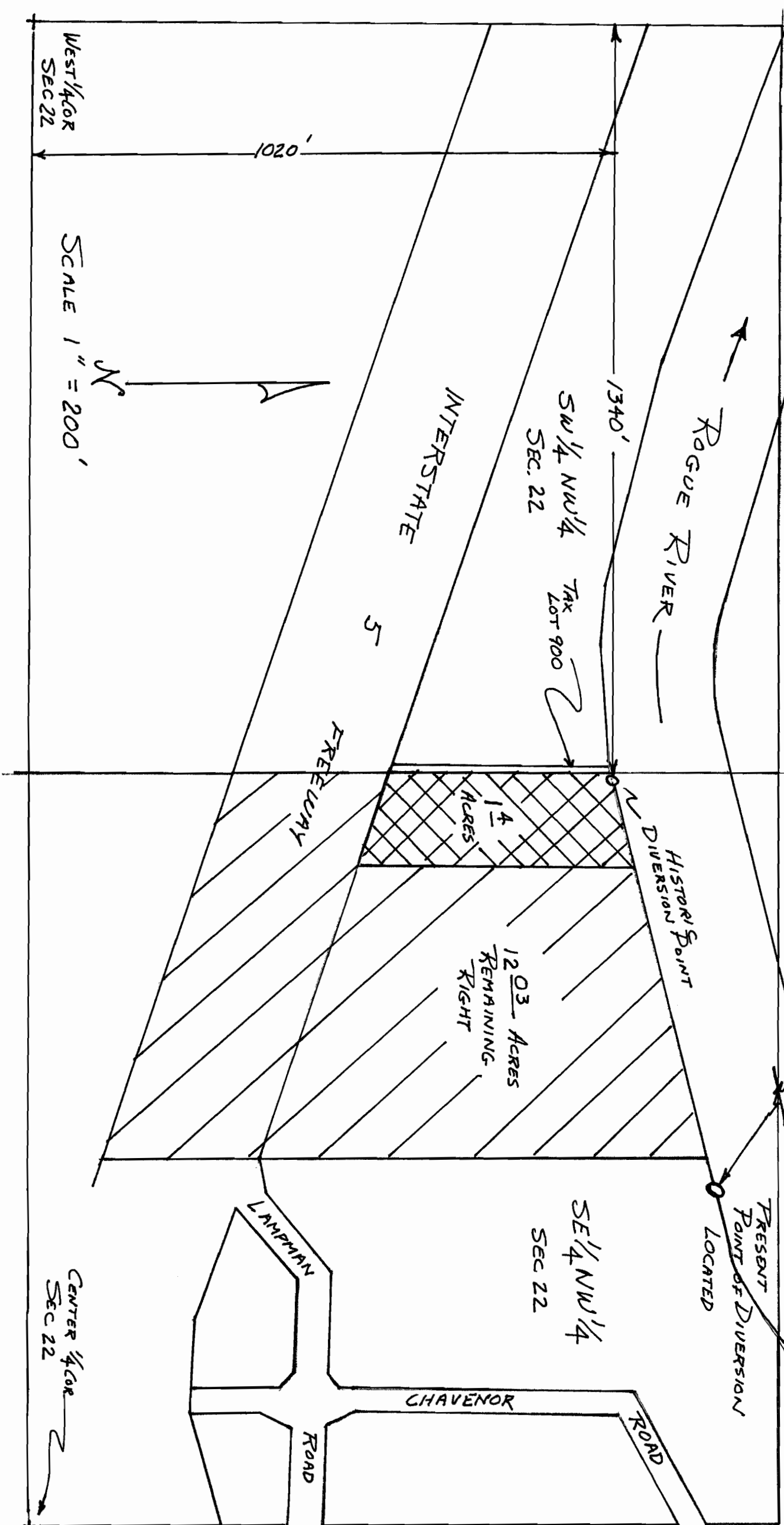


RECEIVED
 SUPERSEDED
 JAN 11 2015
 WATER RESOURCES DEPT
 GRANTS PASS, OR

TRANSFERRED LAND
 REMAINING RIGHT

T. 36 S., R. 3 W., W. 1 M.
 SECTION 22

N 55° W, T-8064
 2508 NW 1/4 COR
 SEC 22
 ELMA RAE GOLDMAN
 POINT OF DIVERSION
 TRANSFER



SCALE 1" = 200'

WEST 1/4 COR
 SEC 22

CENTER 1/4 COR
 SEC 22