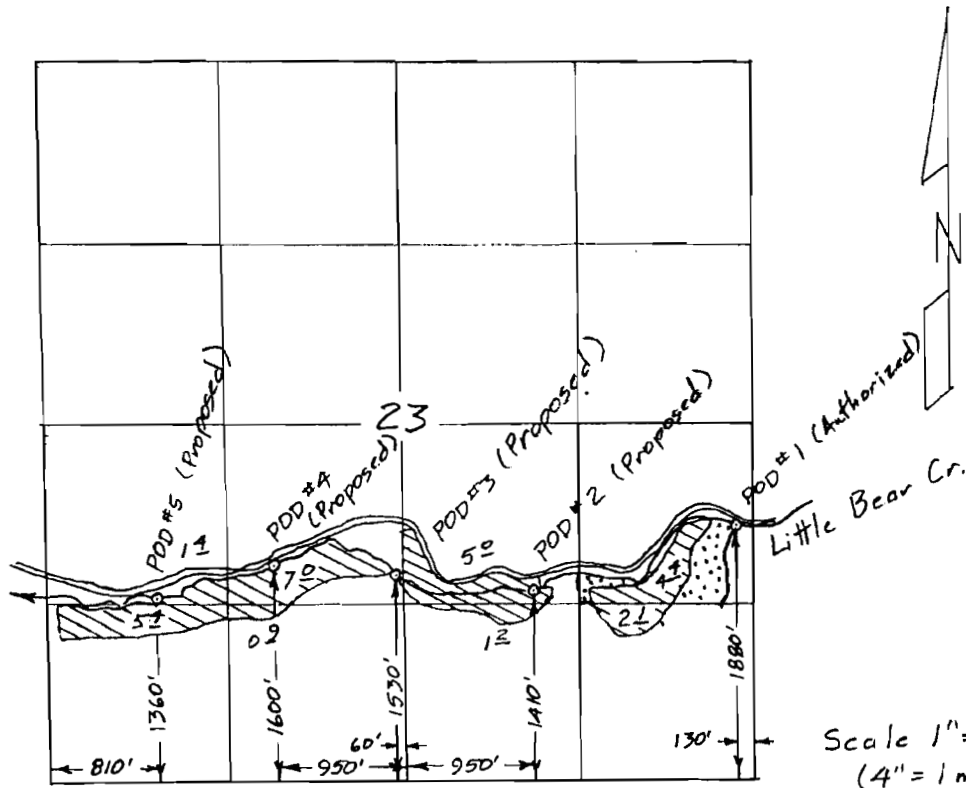


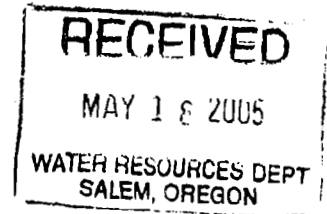
TOWNSHIP 18 SOUTH, RANGE 17 EAST, W.M.

- ⊖ C-11097  
27<sup>±</sup> acres
- ⊕ C-11097  
6<sup>±</sup> acres  
Abandoned



Surveyed July 22, 2004

Claim of Beneficial Use Map  
for  
J.W. Hart, Sagehollow Ranch



Renewal Dec 31, 2005  
Sheet 2 of 2

This map is for the purpose of locating a water right only and has no intent to provide legal dimensions or the location of property lines.

**ESTES SURVEYS, LLC**  
 PO Box 17518 Salem, OR 97305-7519 (503) 566-7593  
 60382 Arnold Rd Bend, OR 97702 (541) 382-7391

2 Feb 05