

239 STATE ENGINEER

JAN 13 1922

SALEM OREGON

MAP

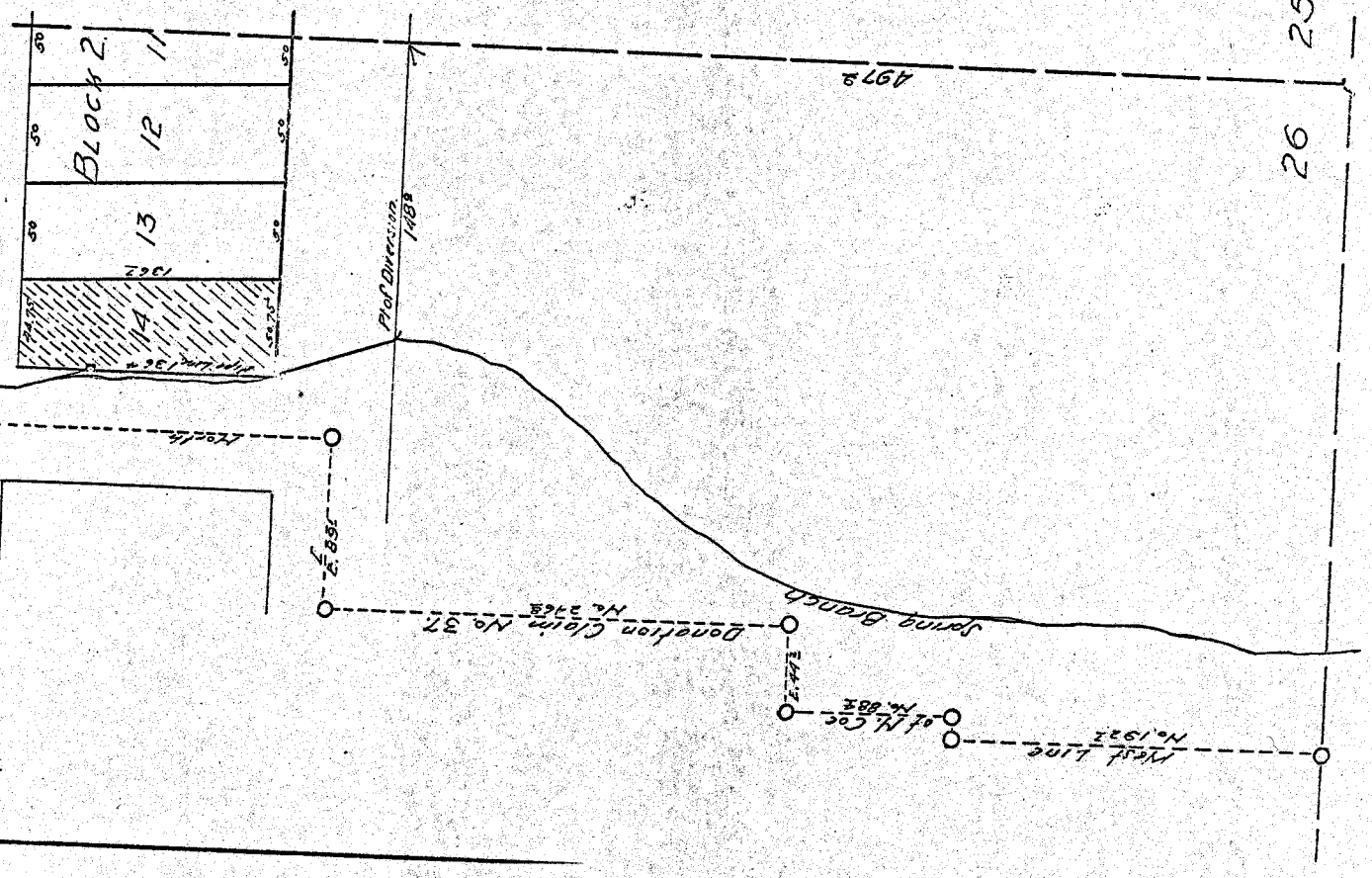
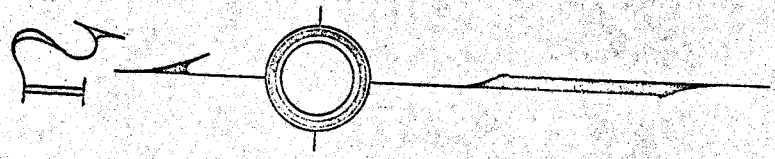
Accompanying application for
permit to appropriate water for
irrigation and power purposes by
S. O. HAMBLIN

In Sec 26, T. 3 N. R. 10 E. N. M.
Scale 1 inch = 100 ft. Jan. 6th, 1922

CERTIFICATE OF SURVEYOR

I, A. R. Cruikshank, of Hood River, Oregon, do hereby certify that this map was made from notes taken during an actual survey made by me on January 3rd, 1922, and that it correctly represents the works described in the accompanying application, together with the location of streams and other ditches in the immediate vicinity.

A. R. Cruikshank
Registered Professional Engineer,
Or. 700 No. 545.
Registered Dec. 6th, 1919.



Application No. 8239

Jan 13 1922

35 1 30