

IW1/4 SEC. 34 T.26S. R.3W. W.M.
DOUGLAS COUNTY

REVISED ON
3-13-97

26 3 3

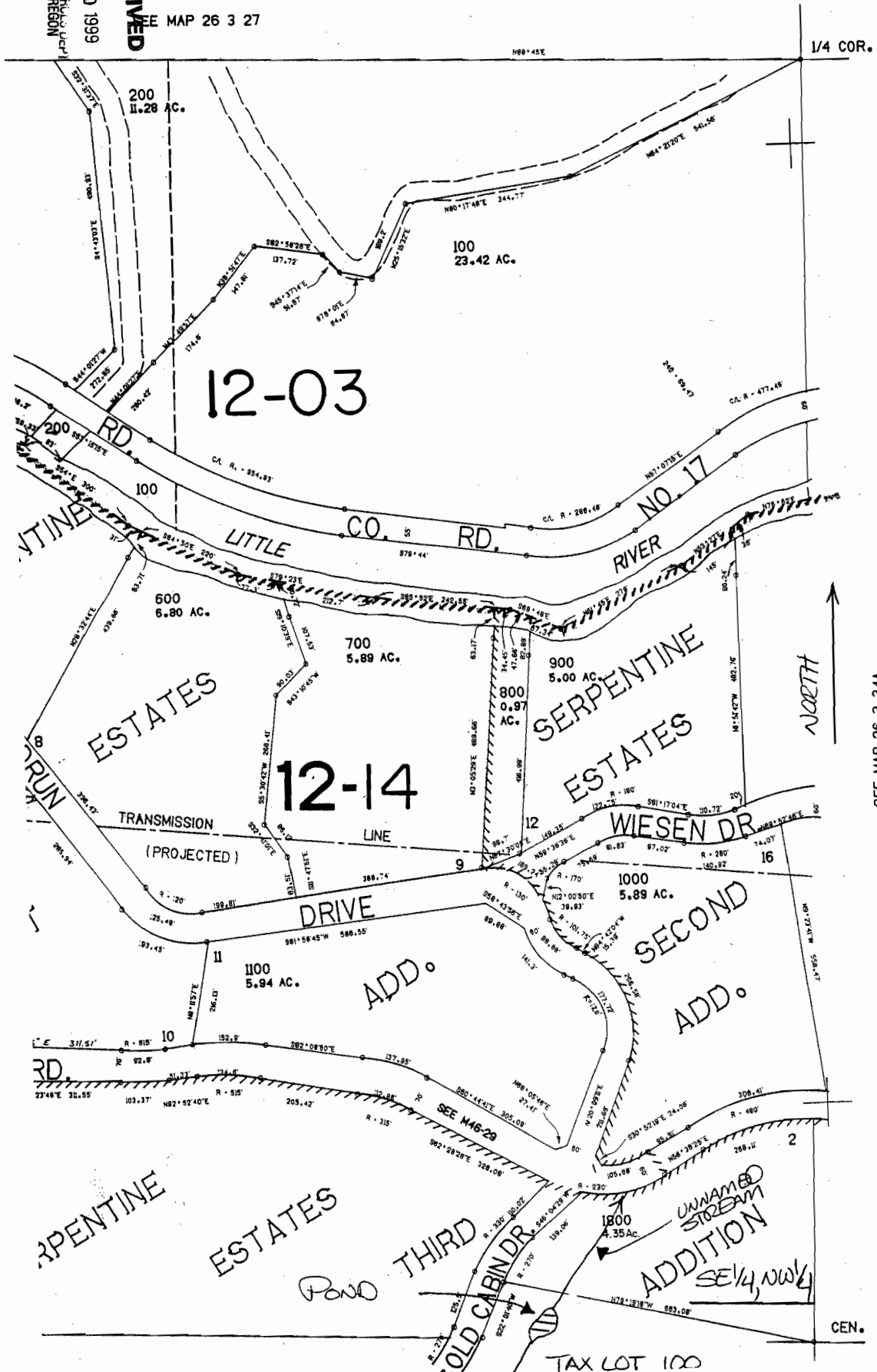
WATER RESOURCES DEPT
SALEM, OREGON

AUG 30 1999

RECEIVED

1"=200'

SEE MAP 26 3 27



Application No. R-8-12-53
Permit No. R-12905

SEE MAP 26 3 34A

593.000

RECEIVED
AUG 04 2003
WATER RESOURCES DEPT
SALEM, OREGON

UNNAMED STREAM
ADDITION
SE 1/4 NW 1/4

POND

OLD CABIN DR

TAX LOT 100

CEN.