

SEC. 22 T.30S. R.4 W W.M.
DOUGLAS COUNTY

1"=200'

SEE MAP 30 4 15

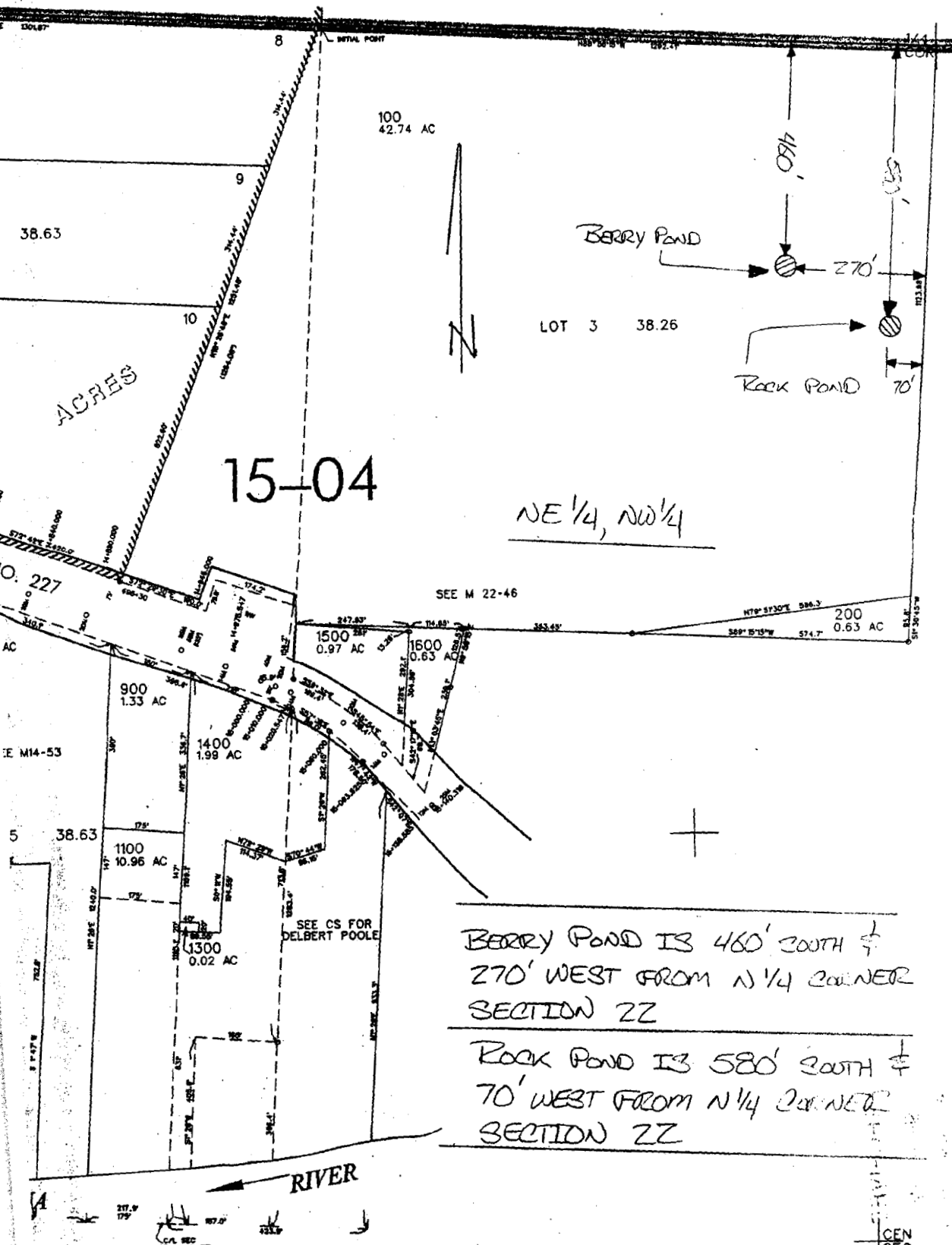
WATER RESOURCES DEPT
SALEM, OREGON

SEP 02 2004

RECEIVED

REVISED ON
2-8-00

CANCELLED
1000 1200



NE 1/4, NW 1/4

BERRY POND IS 460' SOUTH ±
270' WEST FROM N 1/4 CORNER
SECTION 22

ROCK POND IS 580' SOUTH ±
70' WEST FROM N 1/4 CORNER
SECTION 22

RIVER