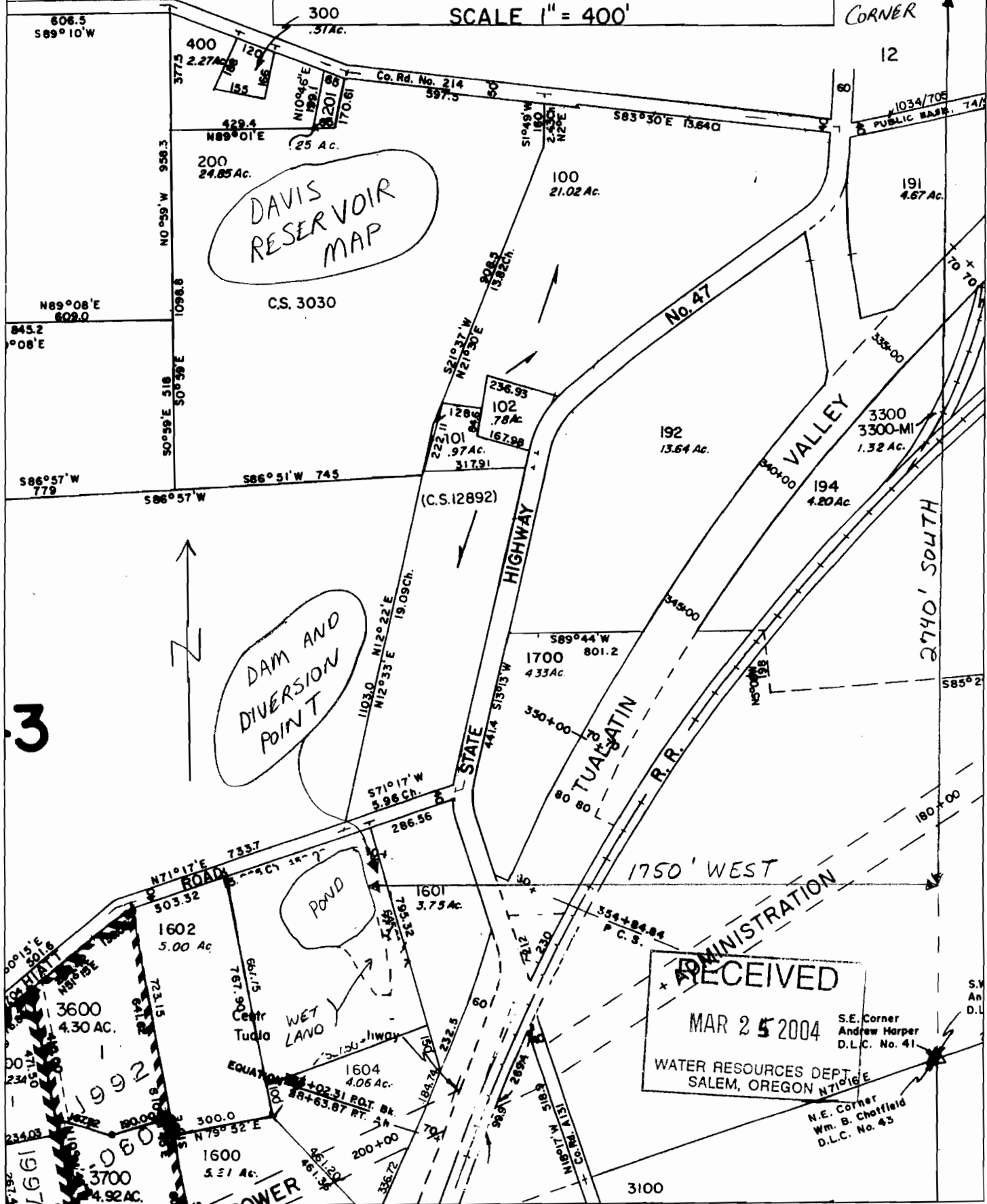


SEE MAP
IS 4 1

SECTION 12 T1S R4W W.M.

WASHINGTON COUNTY OREGON
SCALE 1" = 400'

SECTION
CORNER



DAVIS RESERVOIR
MAP

DAM AND
DIVERSION
POINT

POND

WET
LAND

RECEIVED

MAR 25 2004

WATER RESOURCES DEPT.
SALEM, OREGON

S.E. Corner
Andrew Harper
D.L.C. No. 41

N.E. Corner
Wm. B. Chaffield
D.L.C. No. 43

3

12

191
4.67 Ac.

No. 47

VALLEY

2740' SOUTH

STATE
HIGHWAY

TUALATIN
R.R.

1750' WEST

ADMINISTRATION

3100

S.W.
An
D.L.