

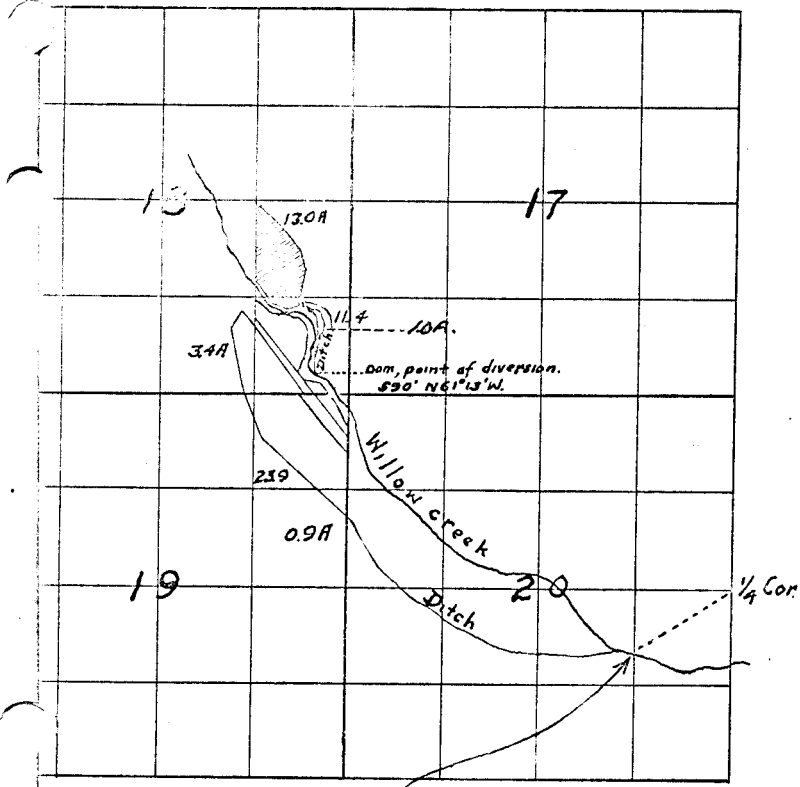
Map Showing Irrigable Land on Ed. McMillan Tract

5789
8181

on Willow Creek, Morrow Co., Oregon,

Secs. 19 & 18, Tp. 1 S., R. 25 E., W.M.

Scale - 2" = 1 mile



S, R. 25 E. W.M.

Point of diversion
123.4° S. 52° 25' W of 1/4 Cor.

I, J.W. Kirschner, of Morrow Co., Or.
certify that this map was made from
during an actual survey made by me
1921, and that it correctly repres
works described in the accompanyi
tion, together with the Location o
other ditches in the immediate vicin
written thereon the area in each sm.
subdivision which it is proposed

J. W. Kirschner
Surveyor

STATE ENGINEER
RECEIVED

SALEM, OREGON

3829
5789