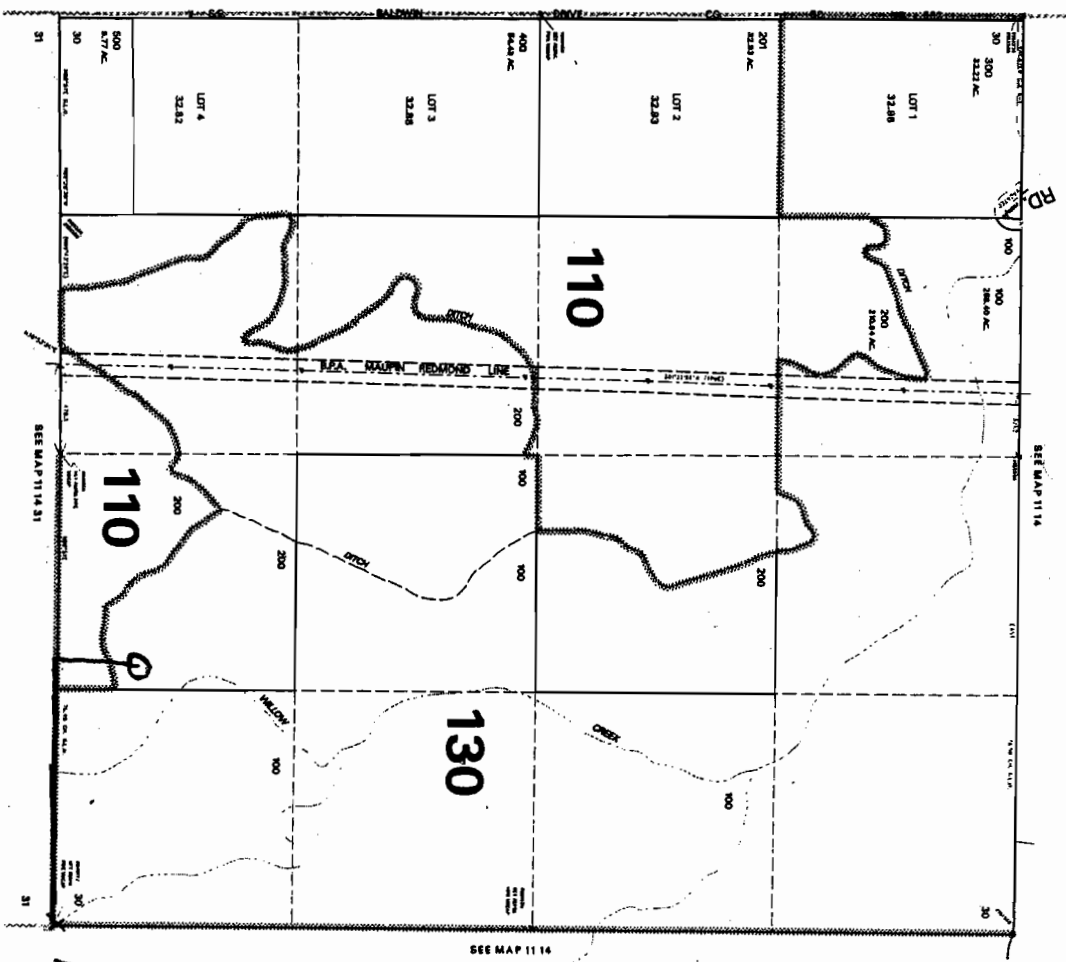


THIS MAP WAS PREPARED FOR ASSESSMENT PURPOSE ONLY

SECTION 30 T11S, R14E, W.M.  
JEFFERSON COUNTY

1" = 800'



Revised: 08/23/01

**RECEIVED**  
 APR 15 2005  
 WATER RESOURCES DEPT  
 SALEM, OREGON

**RECEIVED**  
 MAR 03 2003  
 WATER RESOURCES DEPT  
 SALEM, OREGON

**RECEIVED**  
 MAR 13 2003  
 WATER RESOURCES DEPT.  
 SALEM, OREGON

app # 85494  
 R-1403  
 Permit # R-13870

1470' west then  
 450' north of  
 PLS marker  
 111430'