

RECEIVED

NOV 04 2004

WATER RESOURCES DEPT  
SALEM, OREGON

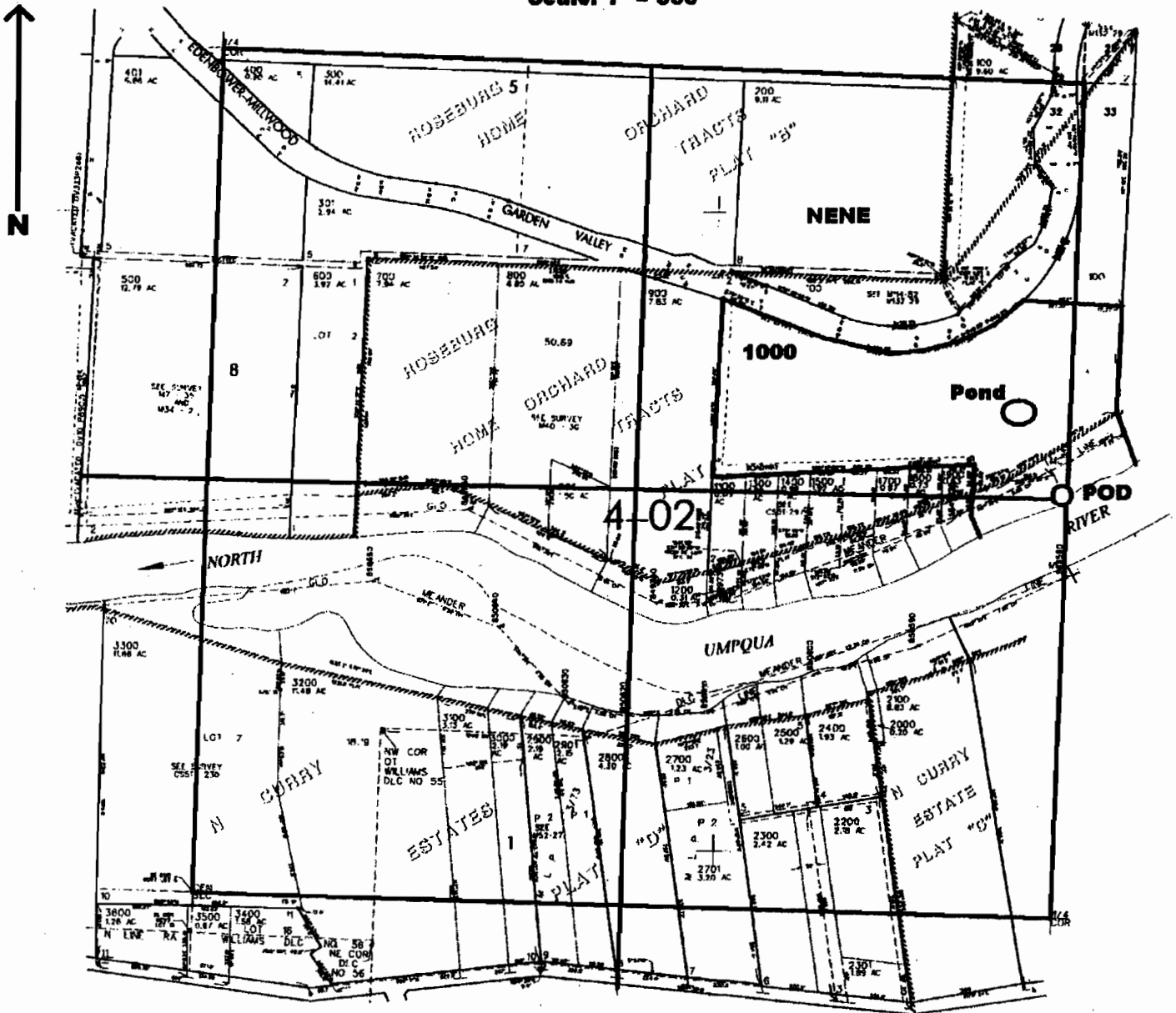
RECEIVED

OCT 17 2003

WATER RESOURCES DEPT  
SALEM, OREGON

NE 1/4 SEC. 32 T.26S. R.6 W W.M.  
DOUGLAS COUNTY

Scale: 1" = 500'



POD located 1300 ft. S. and 20 ft. W. from the NE corner of Sec. 32

RECEIVED

SEP 23 2003

WATER RESOURCES DEPT  
SALEM, OREGON

appno R-85854  
Permit NO R 13892