

THIS MAP WAS PREPARED FOR ASSESSMENT PURPOSE ONLY

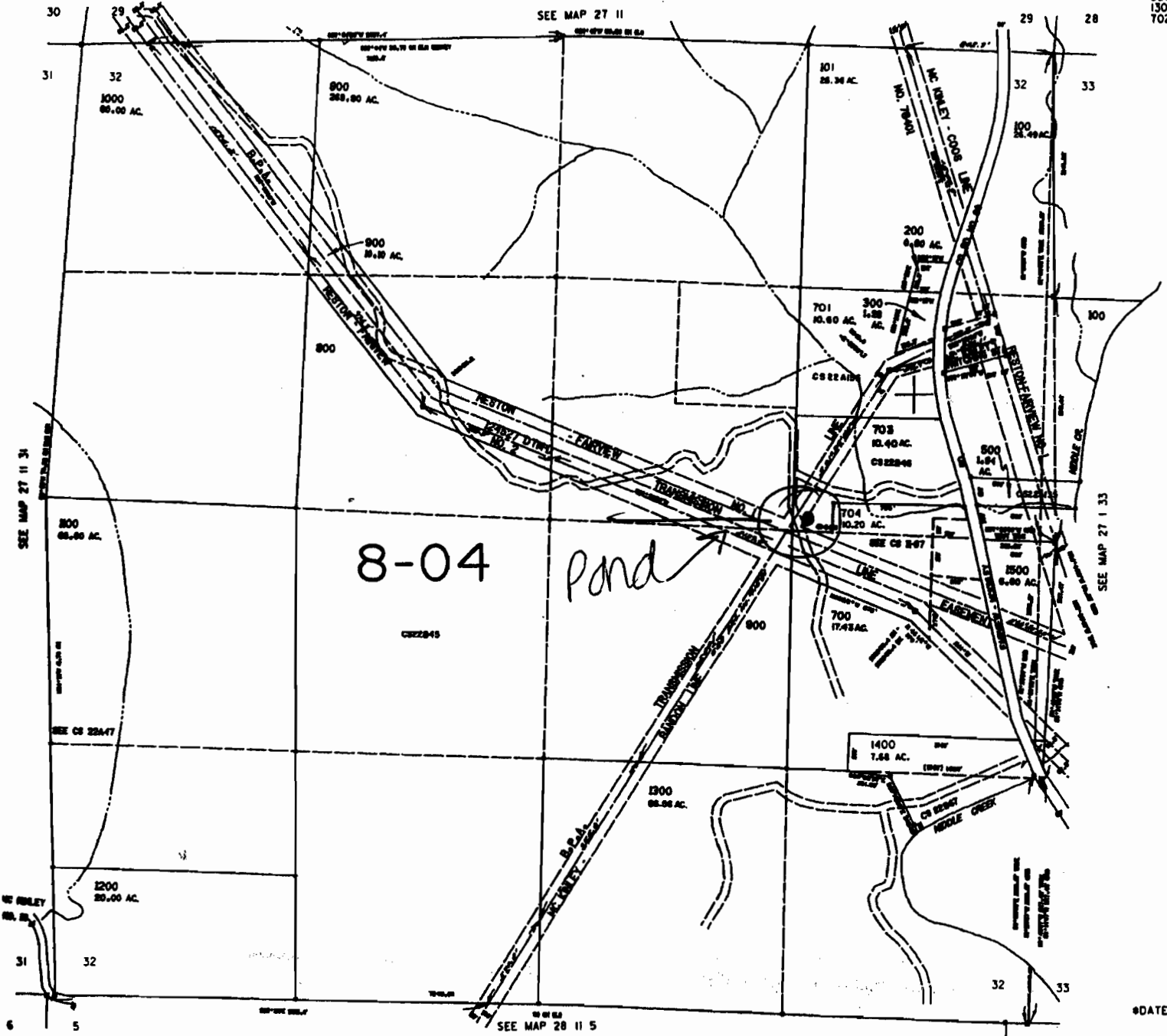
SECTION 32 T.27S. R.11W. W.M. COOS COUNTY

27 11 32



1" = 800 FEET

CANCELLED
400
600
1301
702



WORK COPY ENLARGED

Application R-86038 Permit # R14096

27 11 32

RECEIVED
OCT 19 2005
WATER RESOURCES DIV
SALEM, OREGON

