

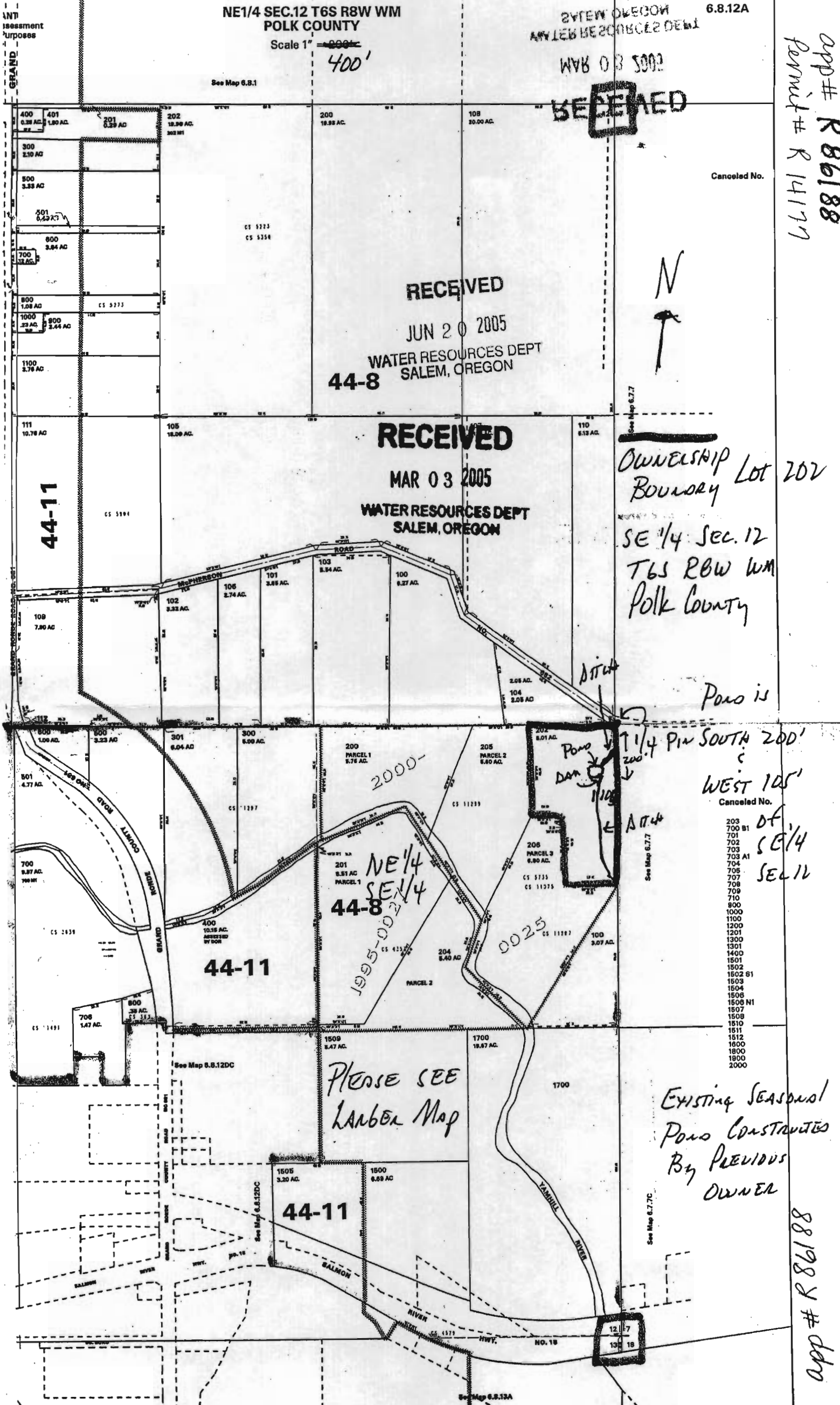
NE1/4 SEC.12 T6S R8W WM
POLK COUNTY

Scale 1" = 400'

SYSTEM OREGON
MAY 15 10 20 05 08 02 05 01
6.8.12A

WAB 03 5002
RECEIVED

app # R 86188
Permit # R 14179



RECEIVED
JUN 20 2005
WATER RESOURCES DEPT
SALEM, OREGON
44-8

RECEIVED
MAR 03 2005
WATER RESOURCES DEPT
SALEM, OREGON

OWNERSHIP Lot 202
BOUNDARY
SE 1/4 SEC. 12
T6S R8W WM
Polk County

Pond is
1 1/4" PIN SOUTH 200'
WEST 105'
CANCELED NO.
203
700 B1
701
702
703
703 A1
704
705
706
707
708
709
710
800
1000
1100
1200
1201
1300
1301
1400
1501
1502
1502 B1
1503
1504
1505
1506
1508 N1
1507
1508
1510
1511
1512
1600
1800
1900
2000

PLEASE SEE
LAMBDA Map

EXISTING SEASONAL
POND CONSTRUCTED
BY PREVIOUS
OWNER

app # R 86188