

RECEIVED  
MAY 18 2001  
WATER RESOURCES DEPT.  
SALEM, OREGON

THIS MAP WAS PREPARED FOR  
ASSESSMENT PURPOSE ONLY

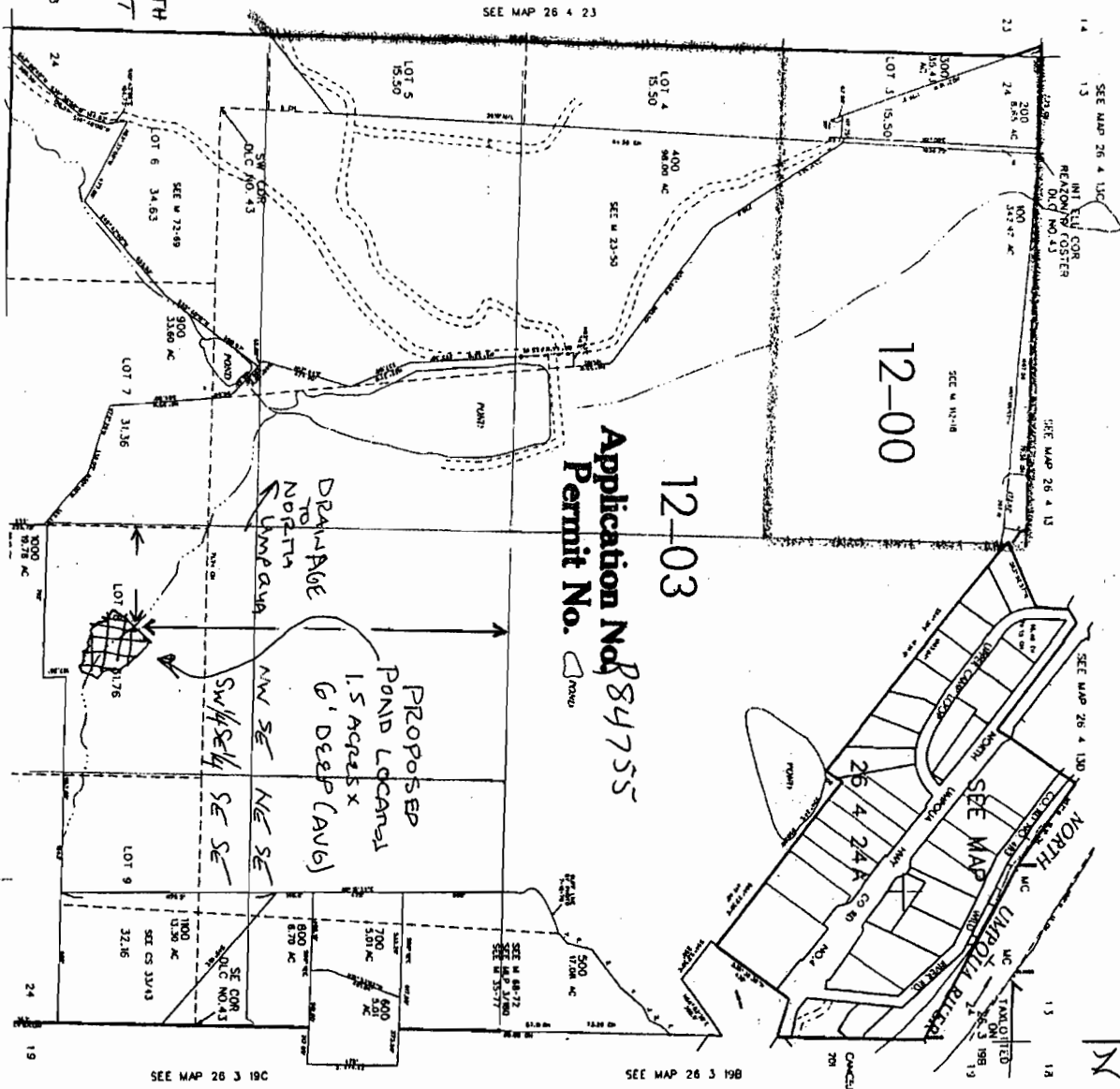
DOUGLAS COUNTY

26 4 24  
& INDEX

11600'  
5/15/02

PER PHONE CALL JIM CADDACK  
541-496-0700  
LOCATION DAM CALCULATED  
WFM  
5-21-01

2000 FT. SOUTH  
560 FT EAST  
FROM  
CENTER  
SECT. 24



Application No. P84755  
Permit No. [initials]

PARCEL 200  
1. 2000 FT. SOUTH  
2. 560 FT. EAST  
3. FROM CENTER  
4. SECT. 24

RECEIVED  
SEP 19 2005  
WATER RESOURCES DEPT  
SALEM, OREGON