

WV4 SEC. 22 T.30S. R.4 W W.M.
DOUGLAS COUNTY

1"=200'

REVISED ON
2-8-00

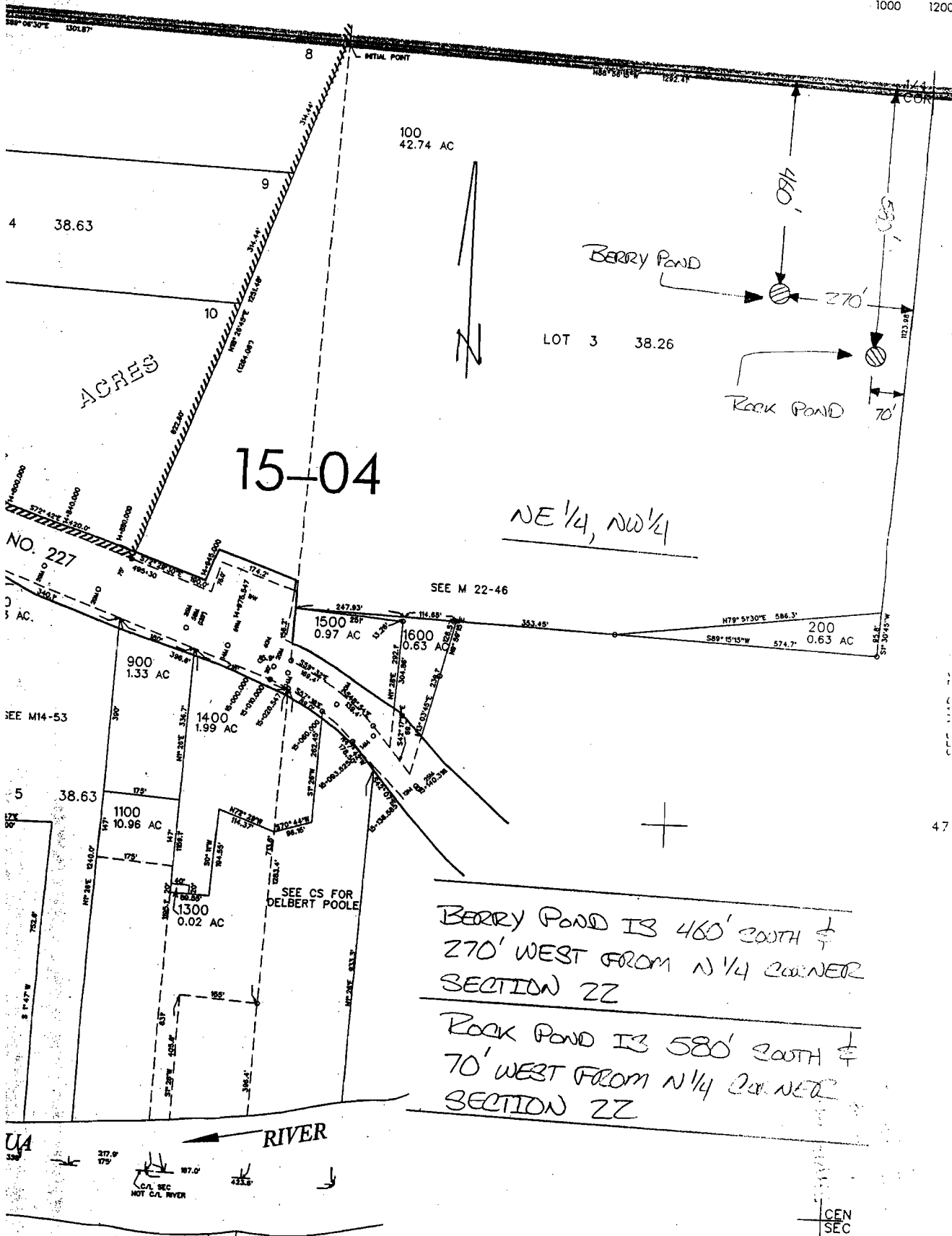
WATER RESOURCES DEPT
SALEM, OREGON

SEP 02 2004

RECEIVED

CANCELLED 1
1000 1200

SEE MAP 30 4 15



15-04

NE 1/4, NW 1/4

BERRY POND IS 460' SOUTH ±
270' WEST FROM N 1/4 CORNER
SECTION 22

ROCK POND IS 580' SOUTH ±
70' WEST FROM N 1/4 CORNER
SECTION 22

RIVER

CEN
SEC