

RECEIVED

APR 26 2005  
WATER RESOURCES DEPT  
SALEM, OREGON

IMPORTANT  
This Map for Assessment  
and Taxation Purposes  
ONLY

SEC. 5 T9S R5W WM  
POLK COUNTY  
Scale 1" = 400'

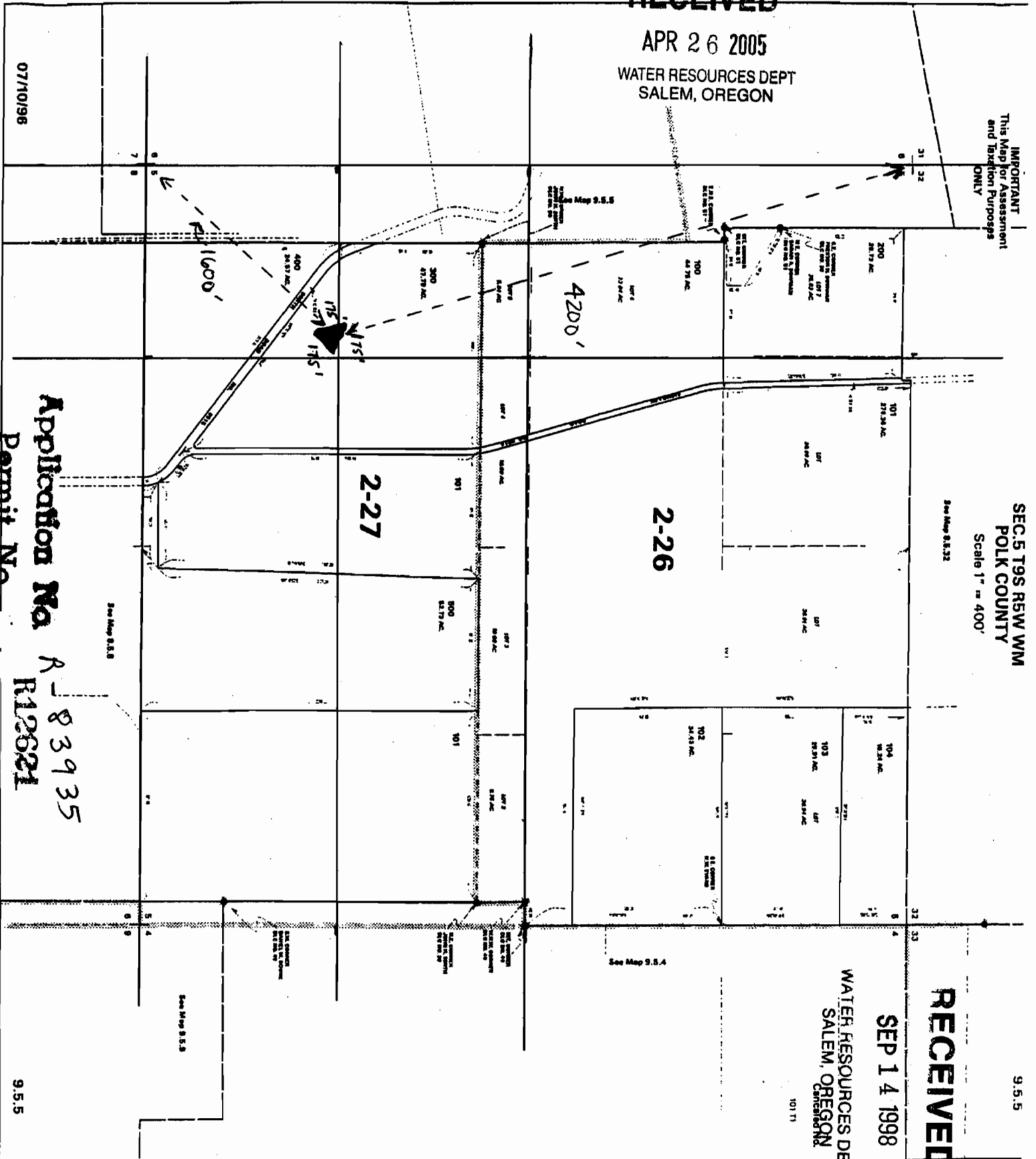
See Map S.S.32

RECEIVED

SEP 14 1998

WATER RESOURCES DEPT.  
SALEM, OREGON

101 71



07/10/1998

Application No. R 83935  
Permit No. R12621

9.5.5