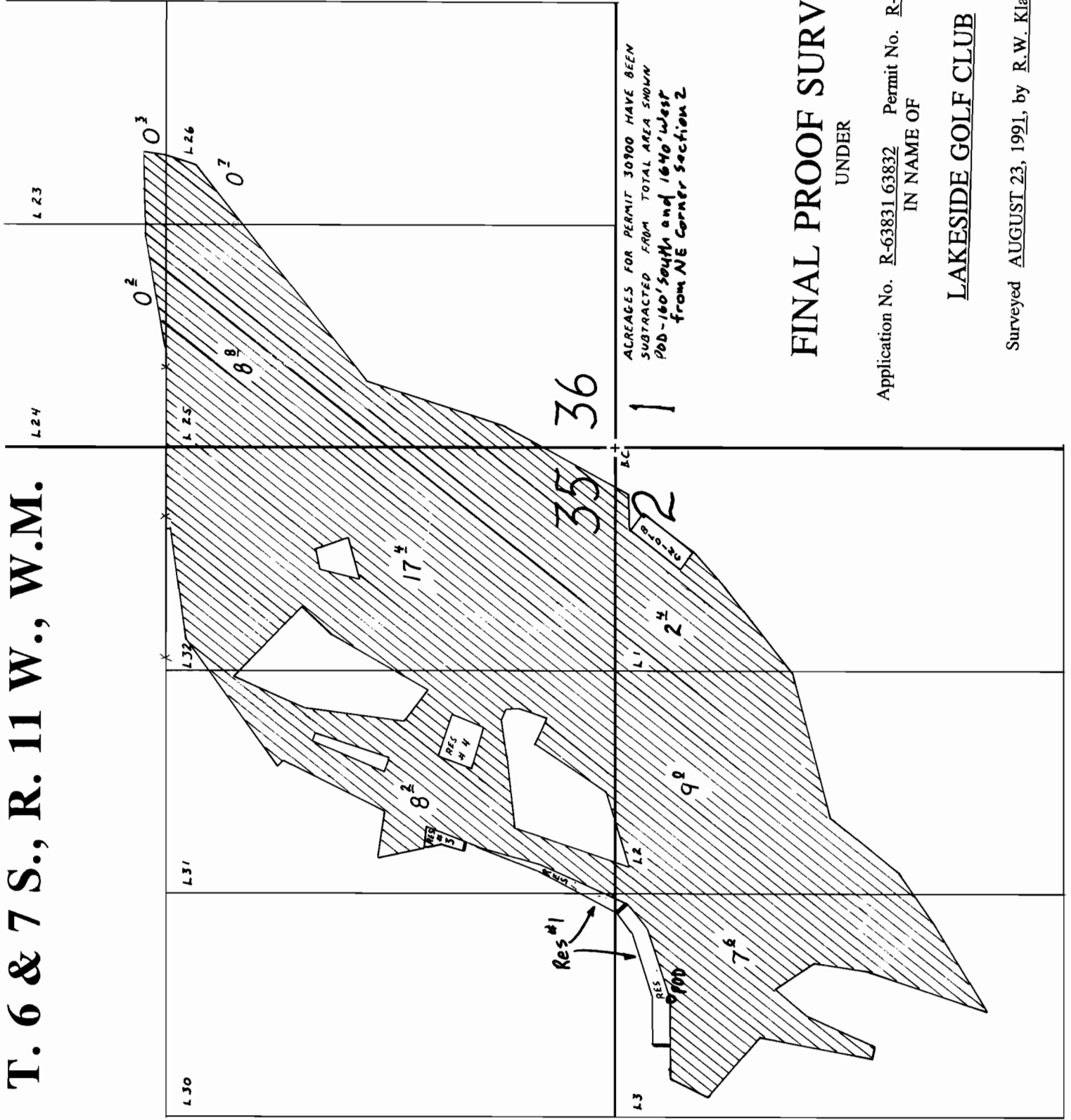


T. 6 & 7 S., R. 11 W., W.M.



1
ACREAGES FOR PERMIT 30900 HAVE BEEN
SUBTRACTED FROM TOTAL AREA SHOWN
POD-160' South and 1640' West
from NE Corner Section 2

FINAL PROOF SURVEY UNDER Application No. R-63831 63832 Permit No. R-8553 47281 IN NAME OF LAKESIDE GOLF CLUB

Surveyed AUGUST 23, 1991, by R.W. Klassen

2-9-2006
2-8-2006
RWC
J/C