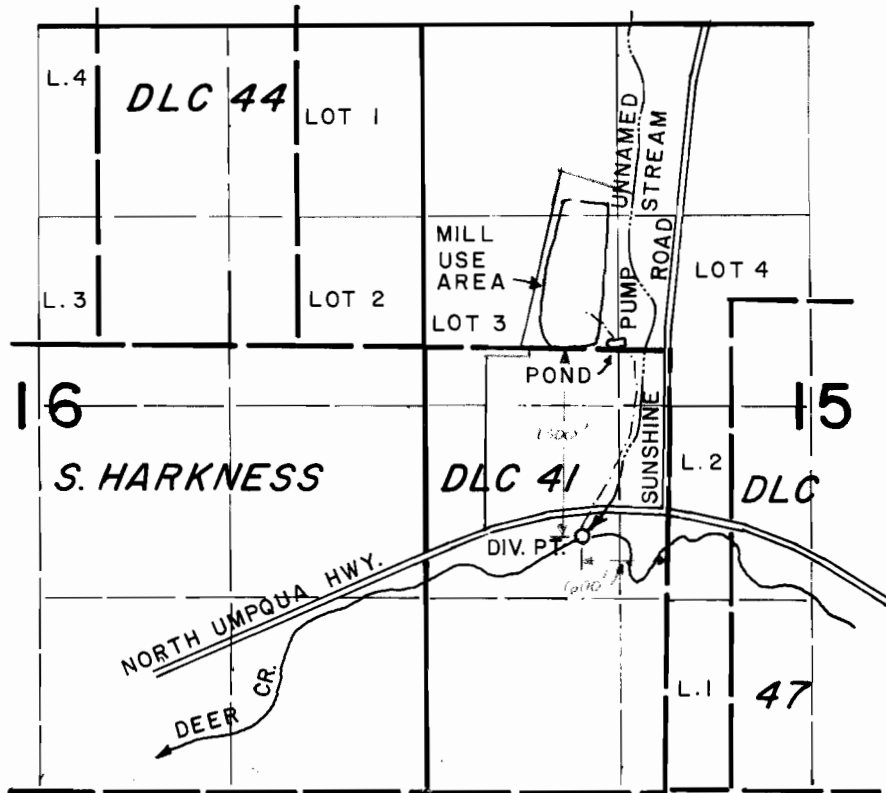


T.27S., R.5W., W.M.



*1300 ft S of
600 ft W from
the NE corner
DLC 41*

SCALE: 4" = 1 MILE

FINAL PROOF SURVEY
UNDER

TRANSFER NO. 5036

IN NAME OF

DALE BOLES

Surveyed OCT. 26, 1987, by J.M. SCHMORDE.

5/5/00 GC