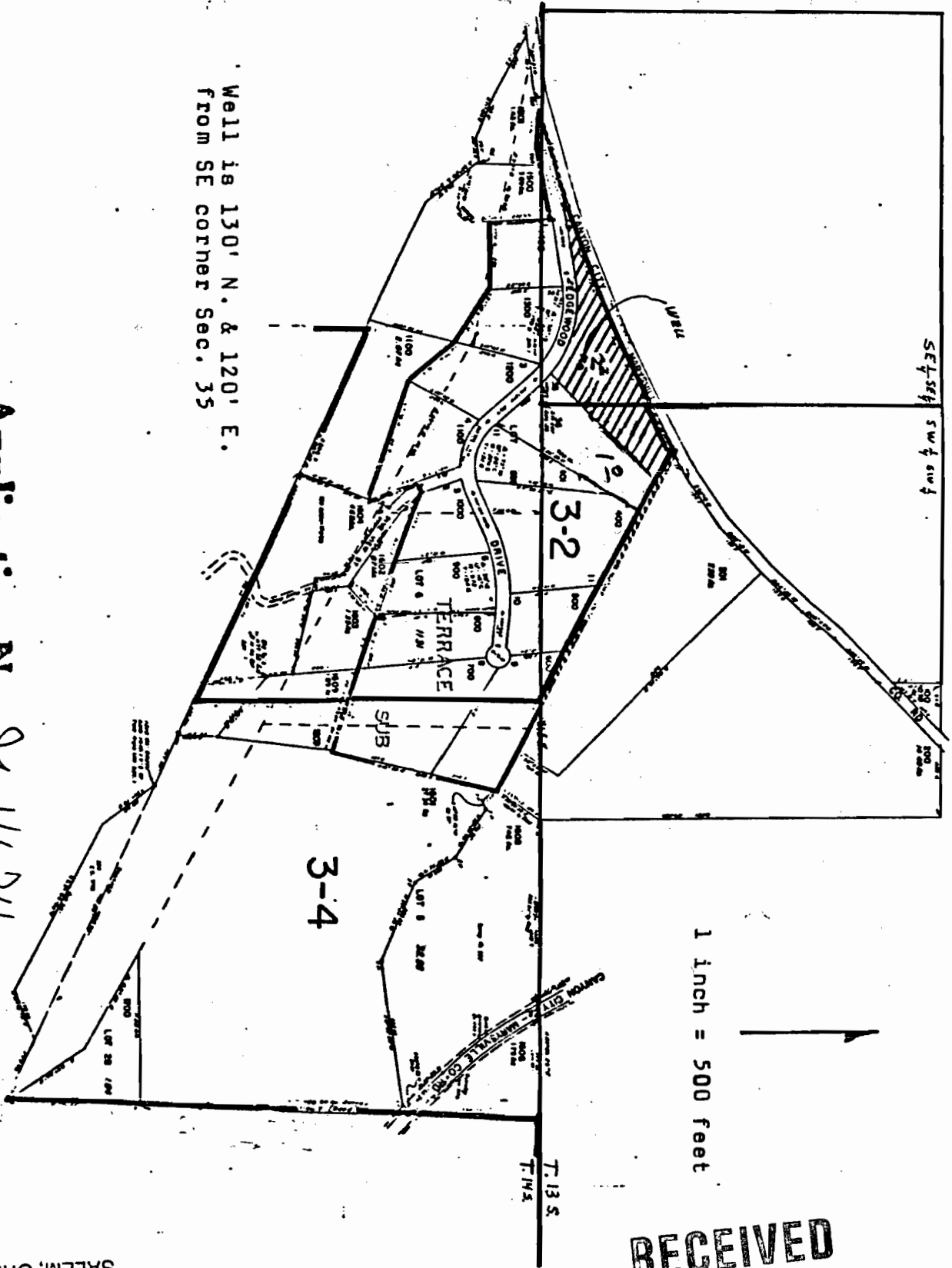




T13S R31E W.M.

13 31

+20



Well is 130' N. & 120' E.
from SE corner Sec. 35

Application No. B-11674
Permit No. G10822

RECEIVED

NOV 20 1987
WATER RESOURCES DEPT.
SALEM, OREGON

WATER RESOURCES DEPT.
SALEM, OREGON

JUL 01 1987
PT

RECEIVED