

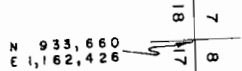
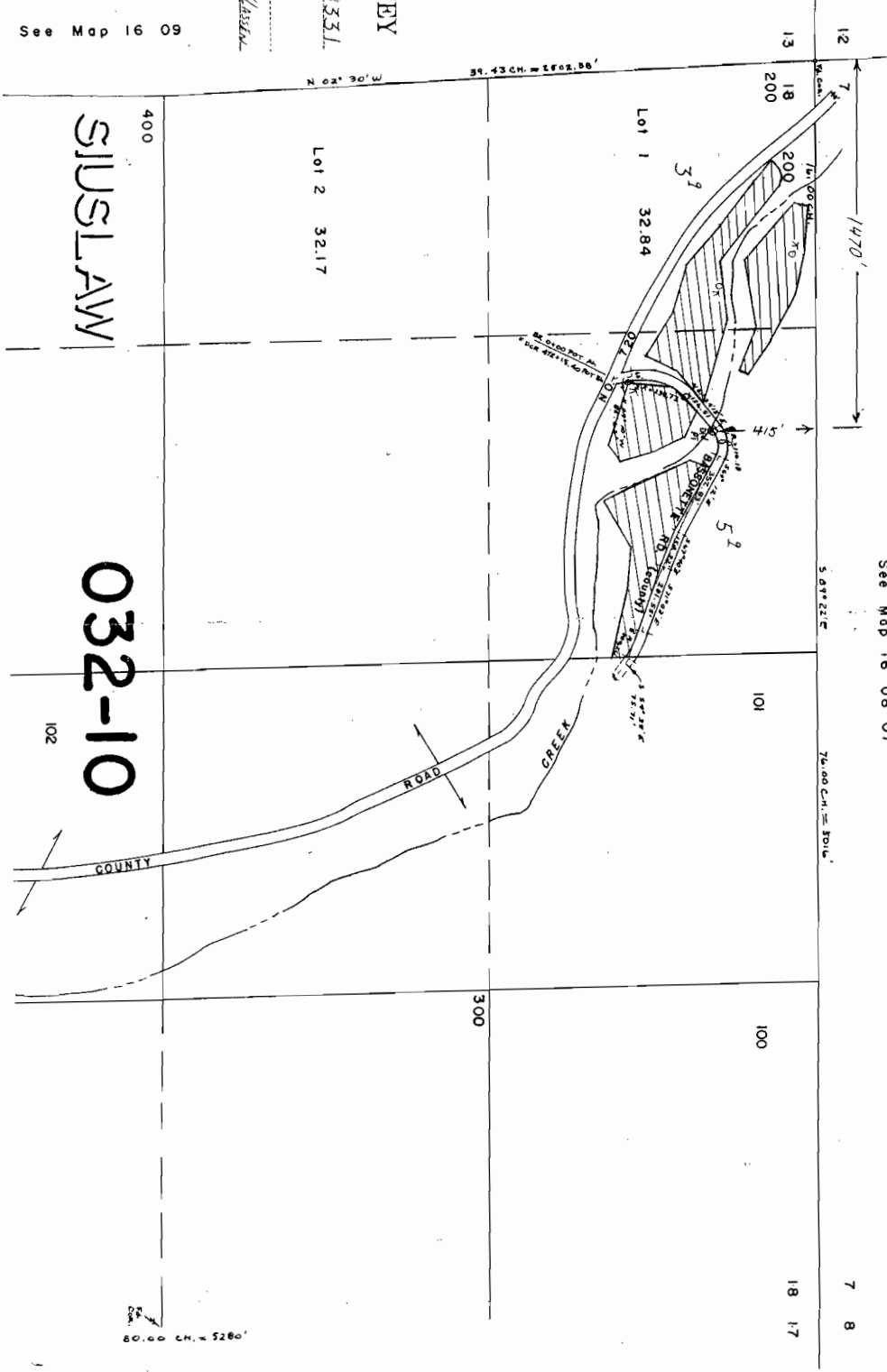
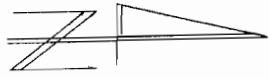
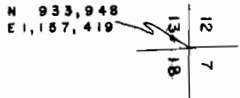
Section 18 T.16 S. R.8 W.W.M.
LANE COUNTY
1"=400'

FOR ASSESSMENT
AND TAXATION
USE ONLY

16 08 18

4-25-'90
-CORR. DIM. ON BRASSONETTE
-ADD ED. STATIONING AT
INTERSECTION

See Map 16 08 07



FINAL PROOF SURVEY

UNDER

Application No. 5075, Permit No. 38331

IN NAME OF

CHARLES BADER

Surveyed June 18 19 91, by *R. W. Klassen*

SUSLAW

032-10

See Map 16 09