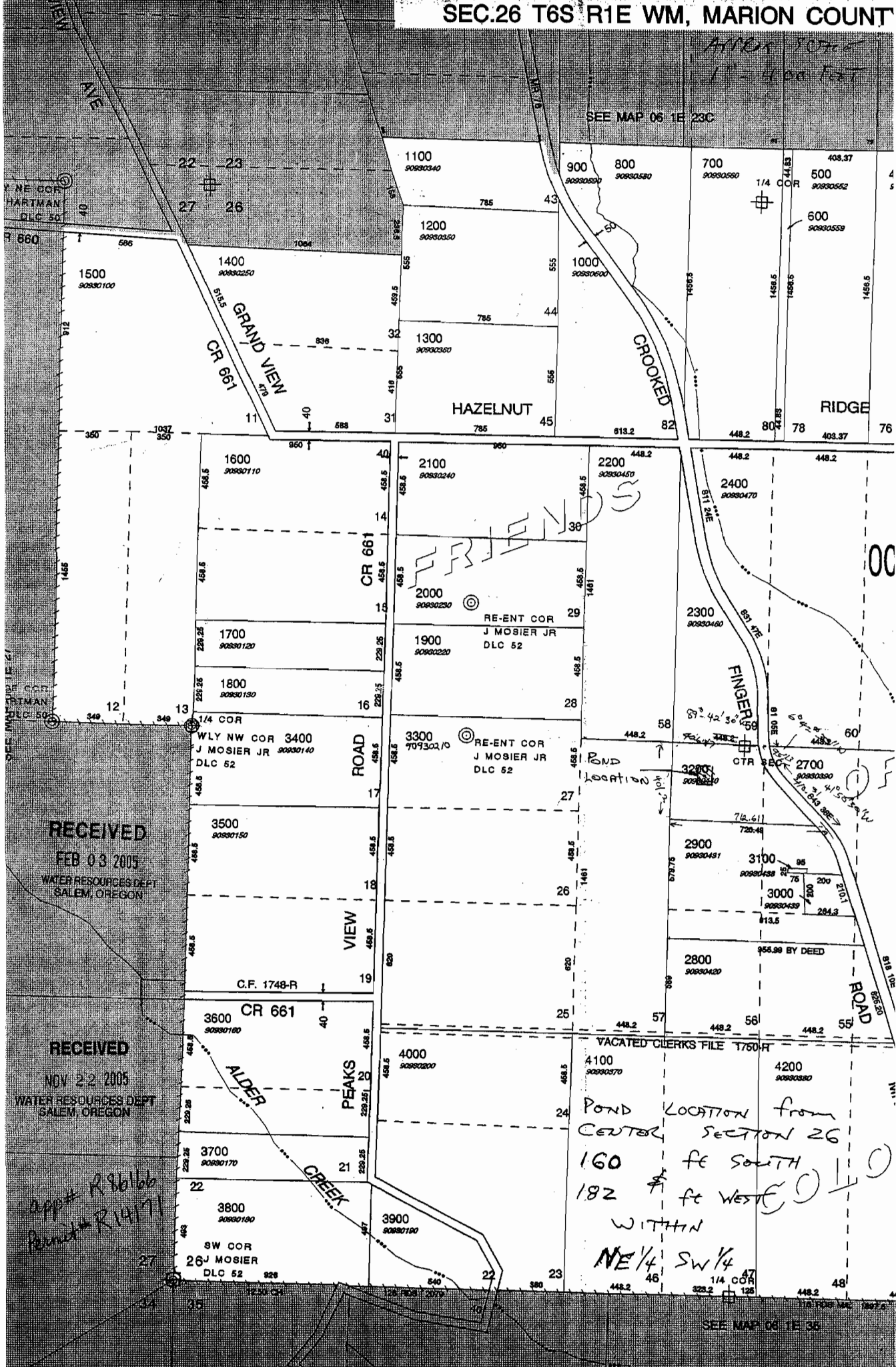


SEC.26 T6S R1E WM, MARION COUNTY

APPROX 10700  
1" = 400 FEET

SEE MAP 06 1E 23C



NE COR  
HARTMAN  
DLC 50

NE COR  
HARTMAN  
DLC 50

SW COR  
J MOSIER  
DLC 52

RECEIVED  
FEB 03 2005  
WATER RESOURCES DEPT  
SALEM, OREGON

RECEIVED  
NOV 22 2005  
WATER RESOURCES DEPT  
SALEM, OREGON

app# R96166  
R14171

FRIENDS

OC

POND LOCATION from  
CENTER SECTION 26  
160 FE SOUTH  
182 FE WEST  
WITHIN  
NE 1/4 SW 1/4

SEE MAP 06 1E 35