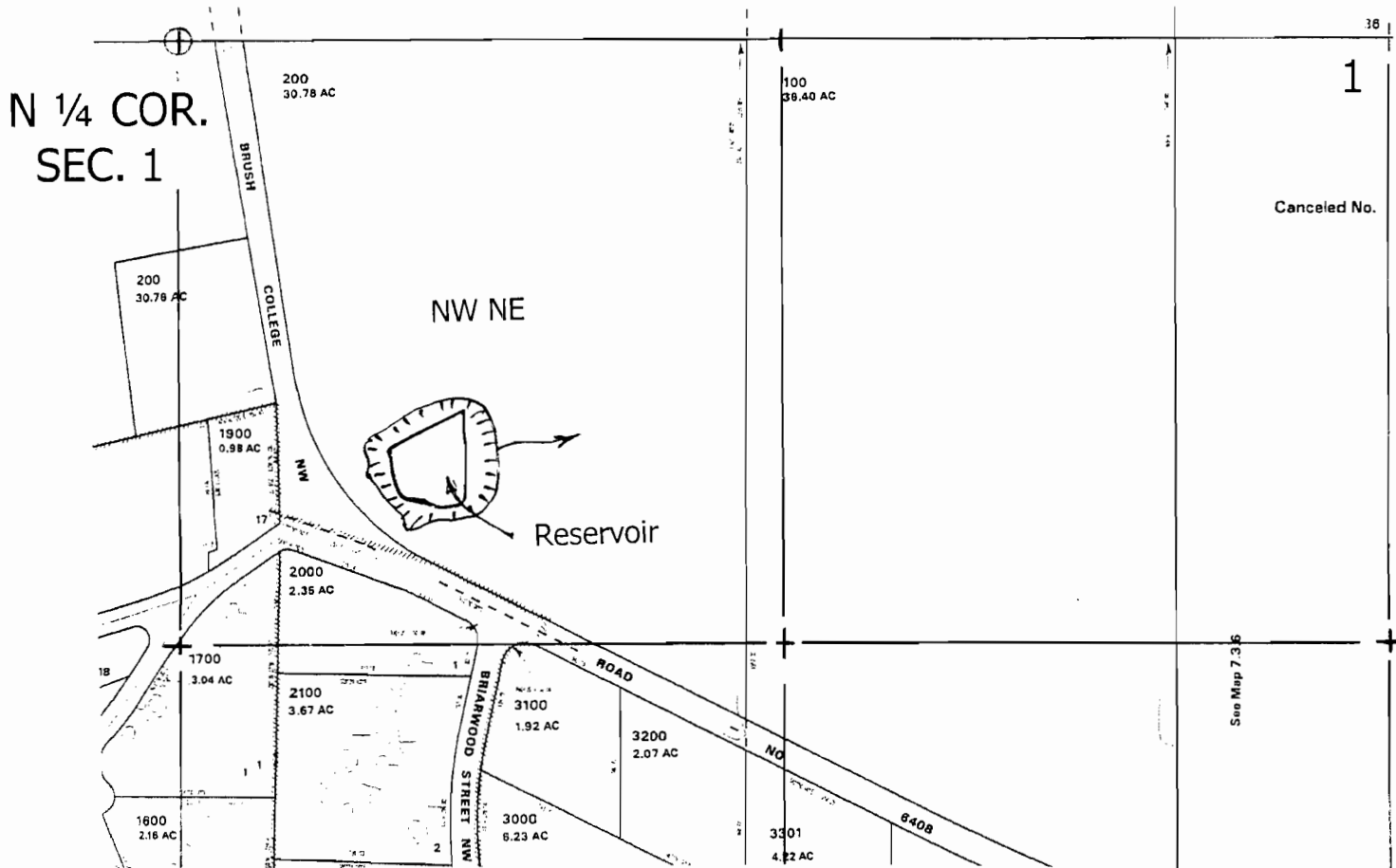
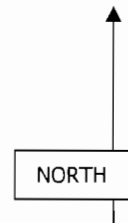


FINAL PROOF MAP IN THE NAME OF

Ditchen Land Company, LLP

T 7 S, R 4 W, W.M.



Reservoir: 900' S & 700' E of the N 1/4 Corner Section 1
Scale 1" = 400'

RECEIVED

JUN 15 2006

WATER RESOURCES DEPT
SALEM, OREGON

This map is for water
right purposes only.

Don Knauer Consulting
PO Box 5416
Salem Oregon 97304