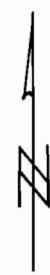
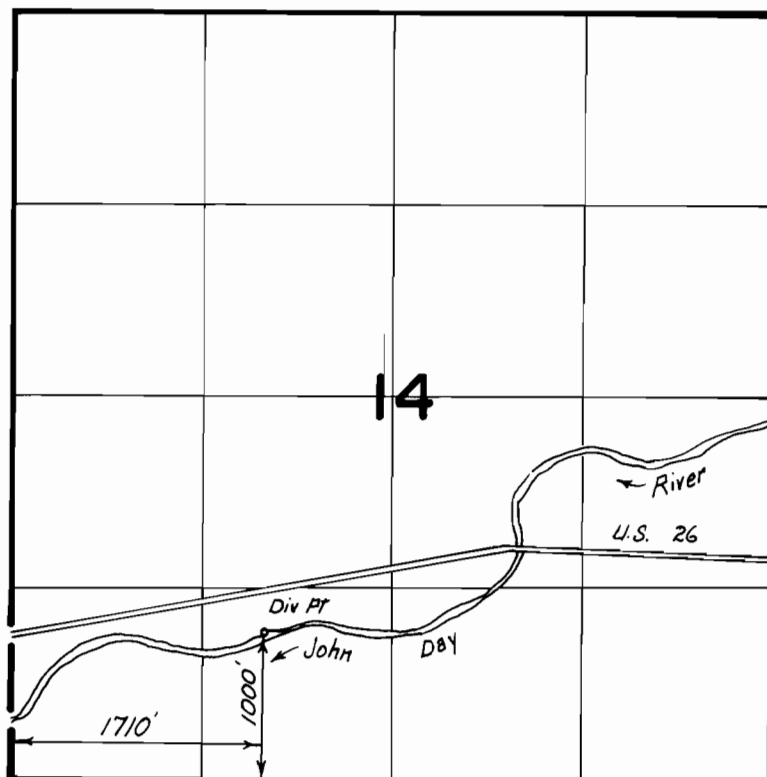


T.13S., R.28E., W.M.



Scale: 1" = 1320'

FINAL PROOF SURVEY UNDER

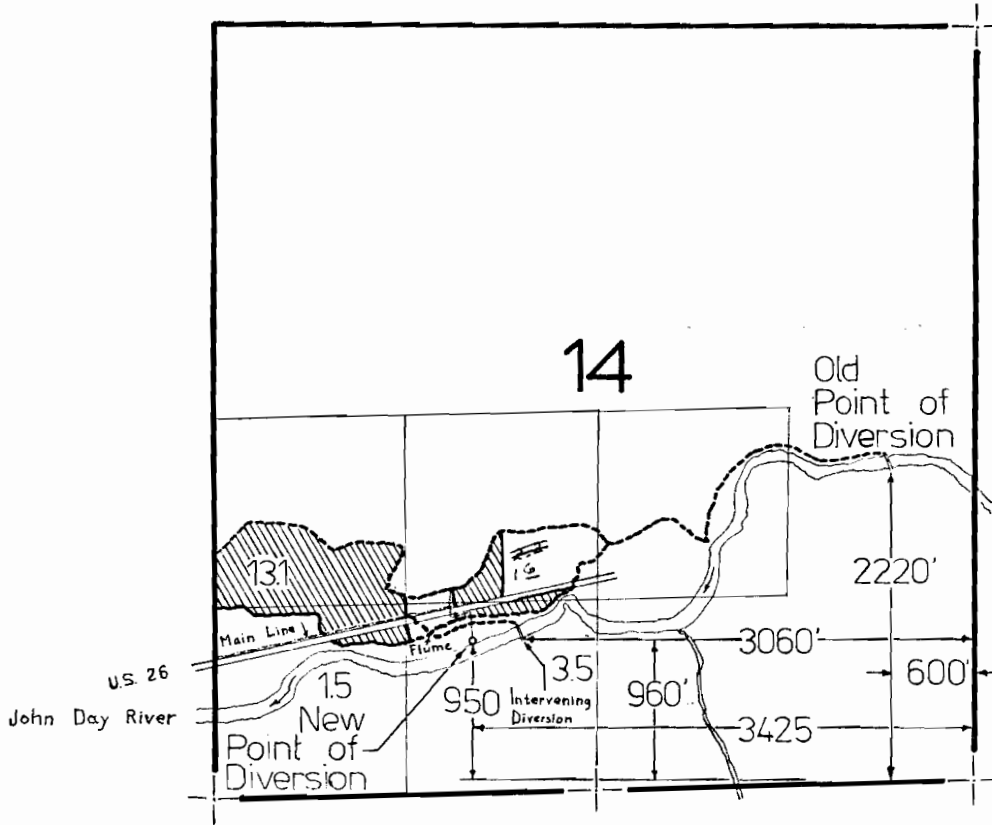
TRANSFER 3504

IN NAME OF

.....DEAN B. ROGERS.....

Surveyed ...7-8... 1987., by ...Vern...Church..

T. 13 S., R. 28 E., W.M.



Transfer application map for Dean B. Rogers, transferring the point of diversion previously transferred under Transfer C-176.

Scale: 4" = 1 mile.

Map source: John Day River Adjudication maps.

(Location of Highway 26 and John Day River have changed since the Adjudication.)

Drawn by Rod Allen, Water Master's Office, District number 4

Approved *Dean B. Rogers*