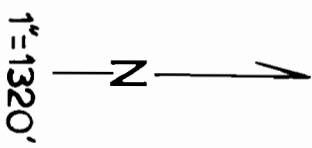
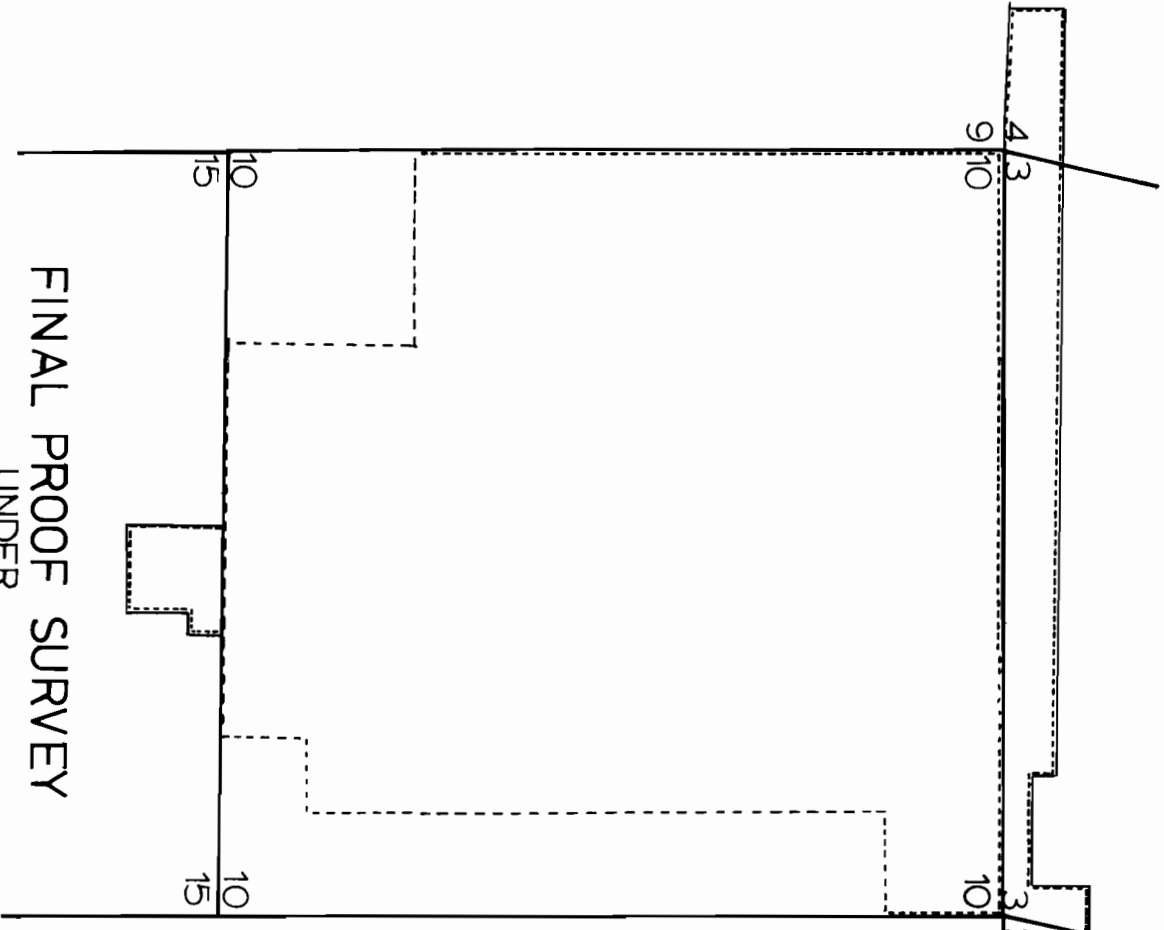
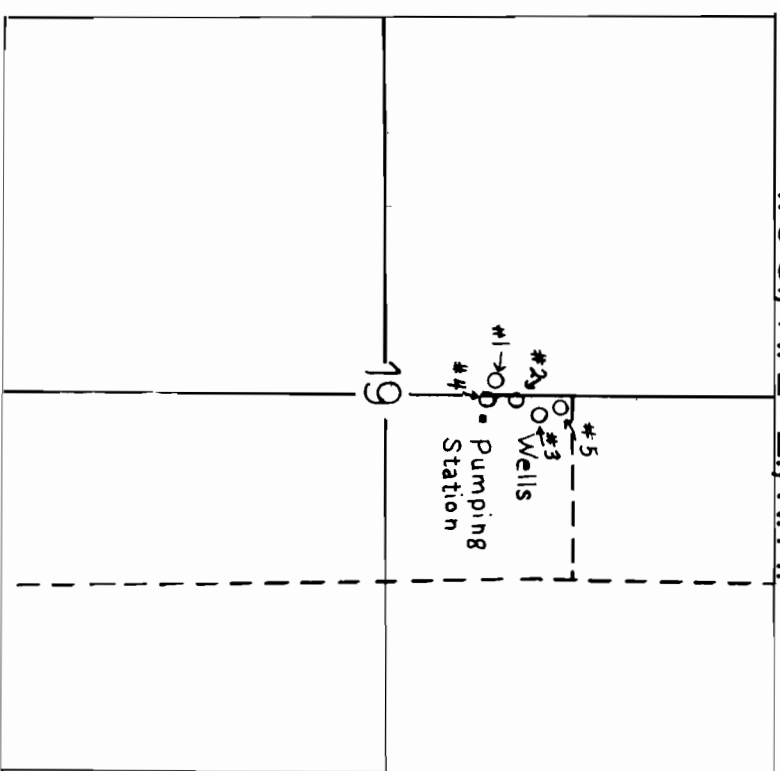


T.4S., R.21E.; W.M.



FINAL PROOF SURVEY
 UNDER
 Application No.G-7440 Permit No.G-7043
 CITY OF CONDON
 Surveyed 1-30-1991 by K.Kemp

T.3S., R.21E.; W.M.



WELL LOCATIONS

# 1	400' S. & 1430' W.	# 4	590' S. & 1230' W.
# 2	350' S. & 1120' W.	# 5	160' S. & 1210' W.
# 3	280' S. & 1310' W.		

All from the NE Cor. SW 1/4 NE 1/4, Sec. 19

Drafted 3-18-93 J.M.
4/021-229-4/R
4/021-279-105/R
 USGS Condon Quadrangle
 USGS Gwensden Quadrangle