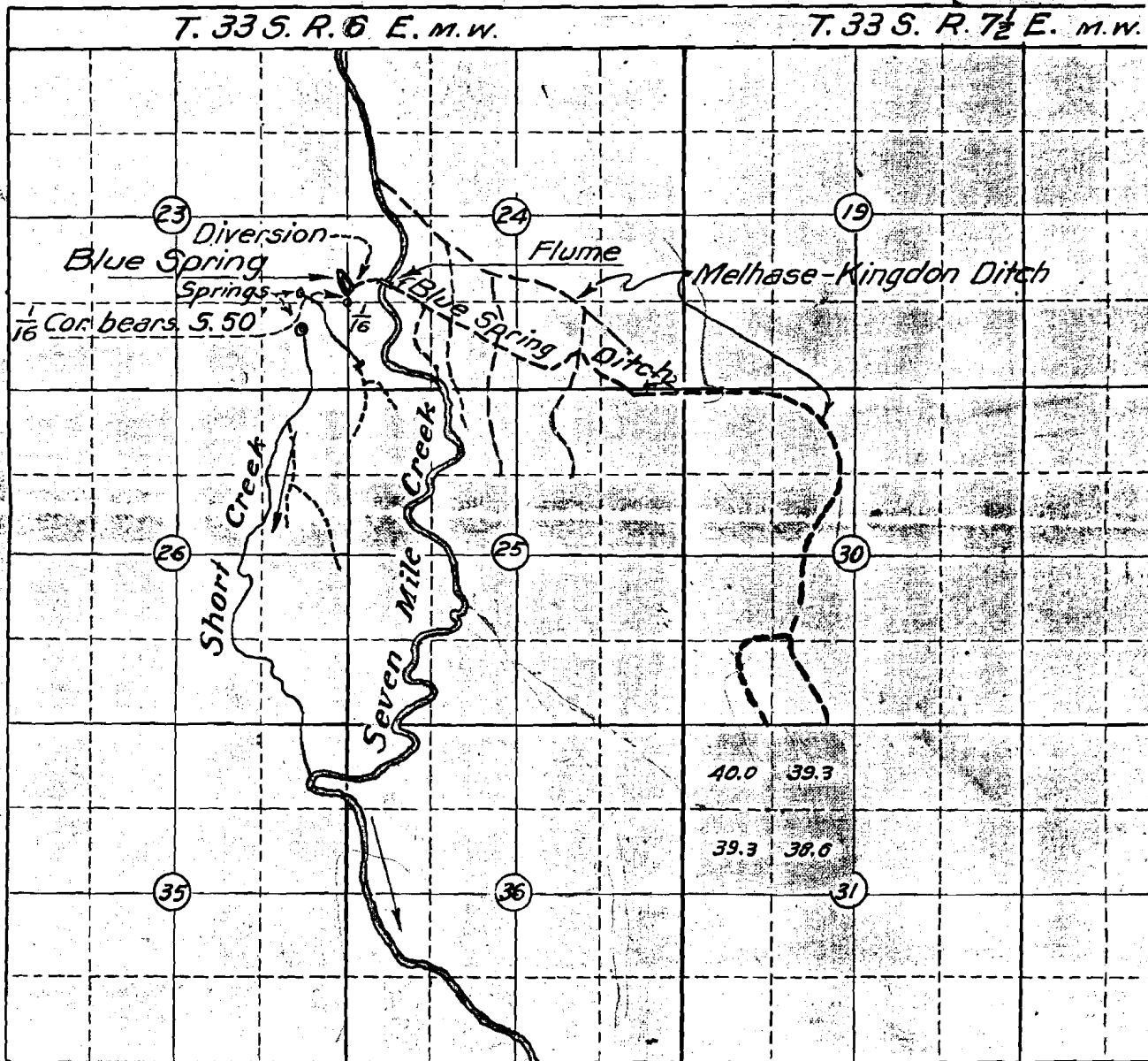


Map 12388

Edward Bloomingcamp, Admin of Est of Geo W  
and J W Siemens

9131  
8262



Seven mile use note (2)

MAP

Accompanying application for appropriation of water from Blue Springs supplement water right of Edward Bloomingcamp, administrator of E. of Geo. W. Bloomingcamp, & J. W. Siemens thru the Melhase-Kingdon Ditch, Klamath Co. Ore., Scale: 2 in. = 1 mi.

Engineer's Certificate:

I, C. C. Kelley, of Klamath Falls, Oregon, do hereby certify that this map was made from notes taken during an actual survey made under my immediate supervision on the 24th day of July 1928, and that it correctly represents the works described in the accompanying application, together with the location of streams and other ditches in the immediate vicinity.

*C. C. Kelley*  
Registered Professional Engineer.

Oregon No. 308