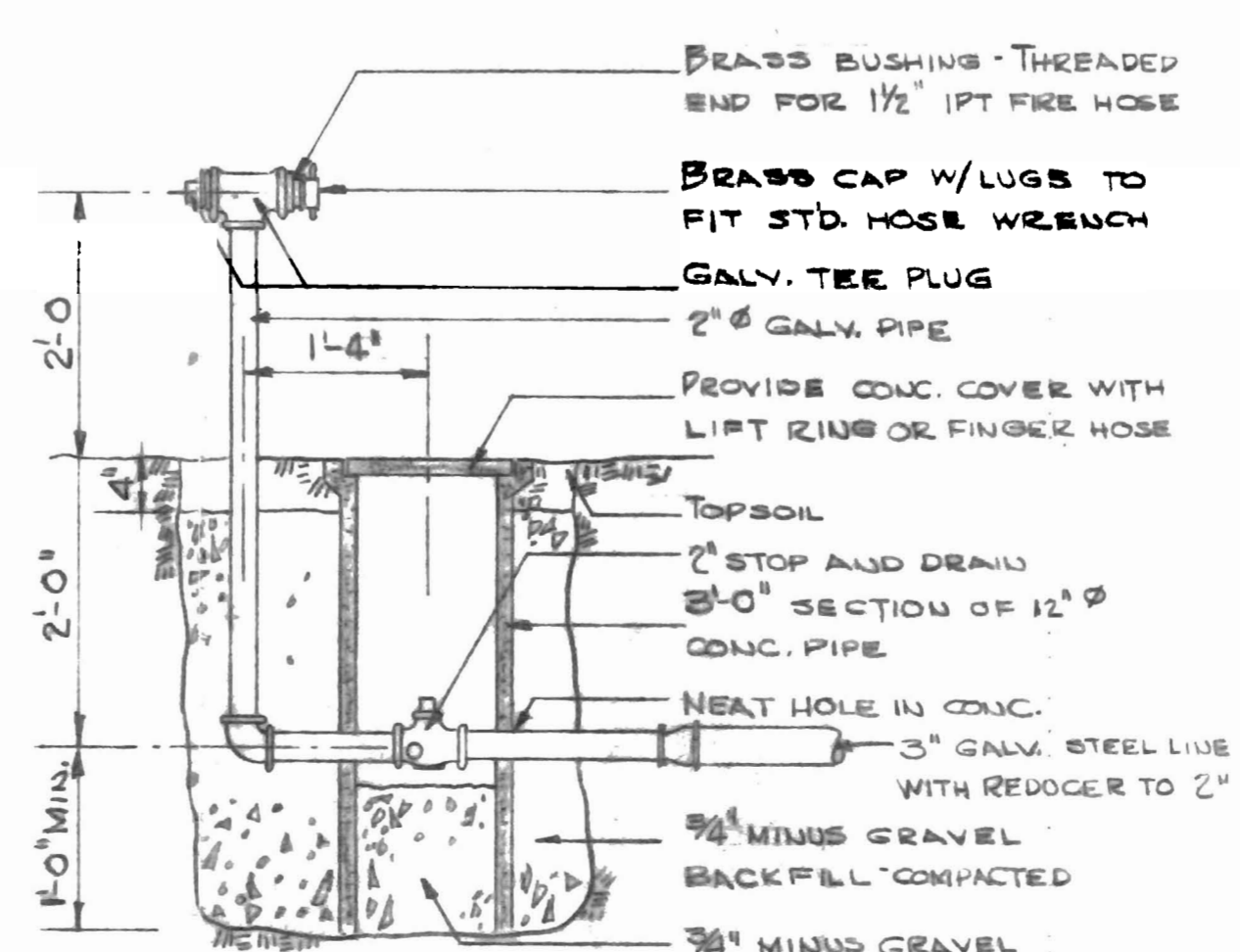
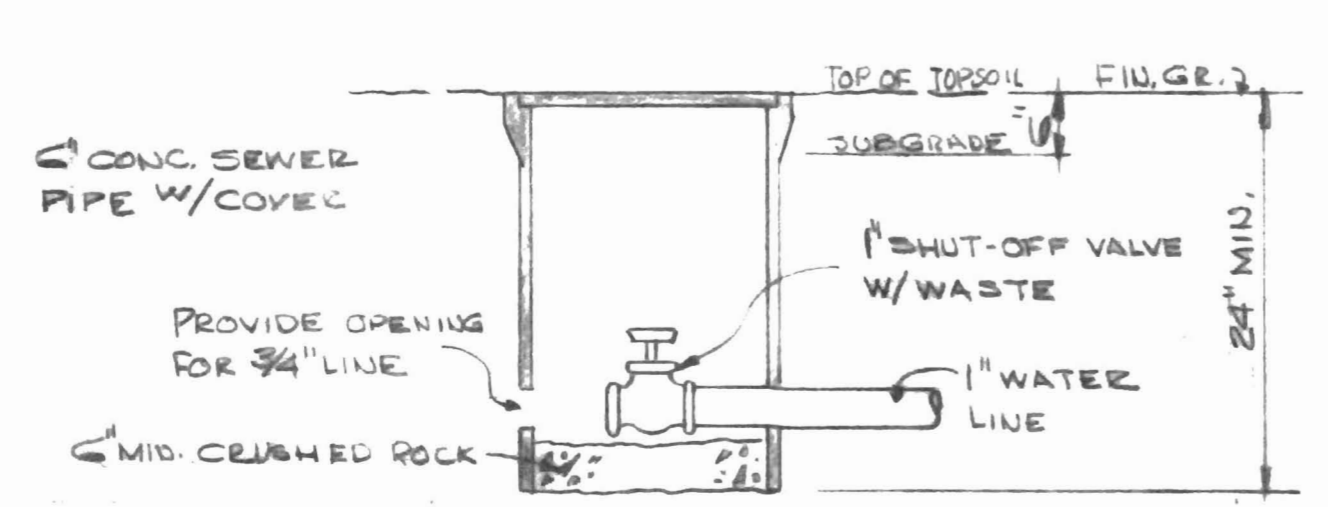
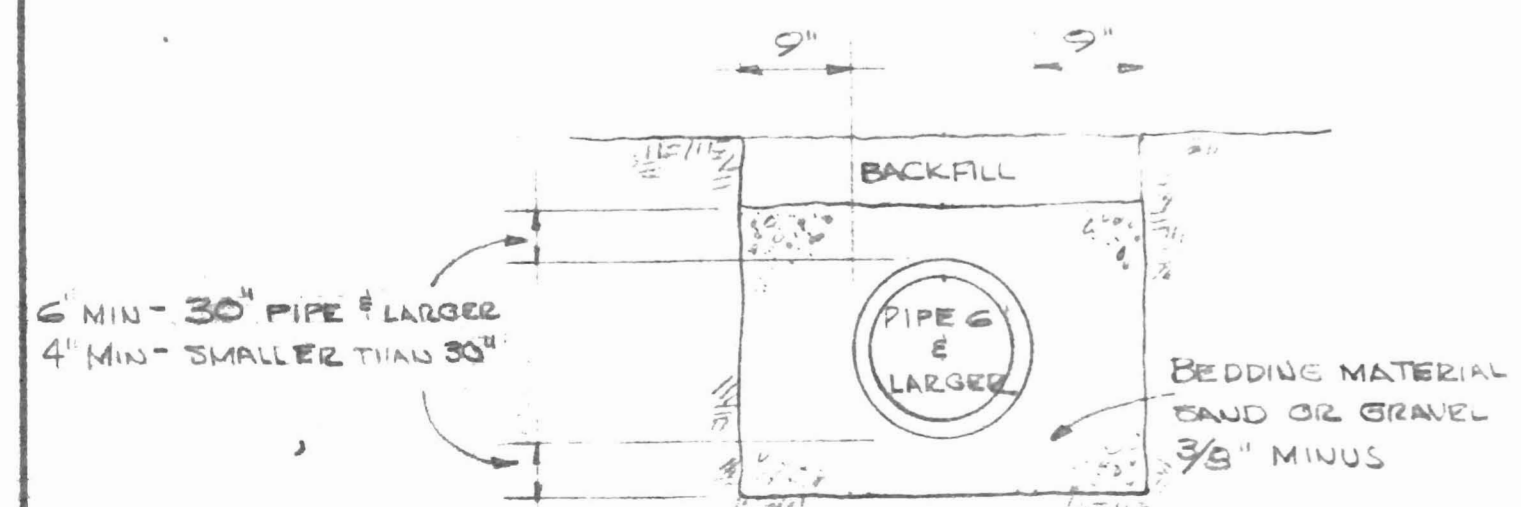
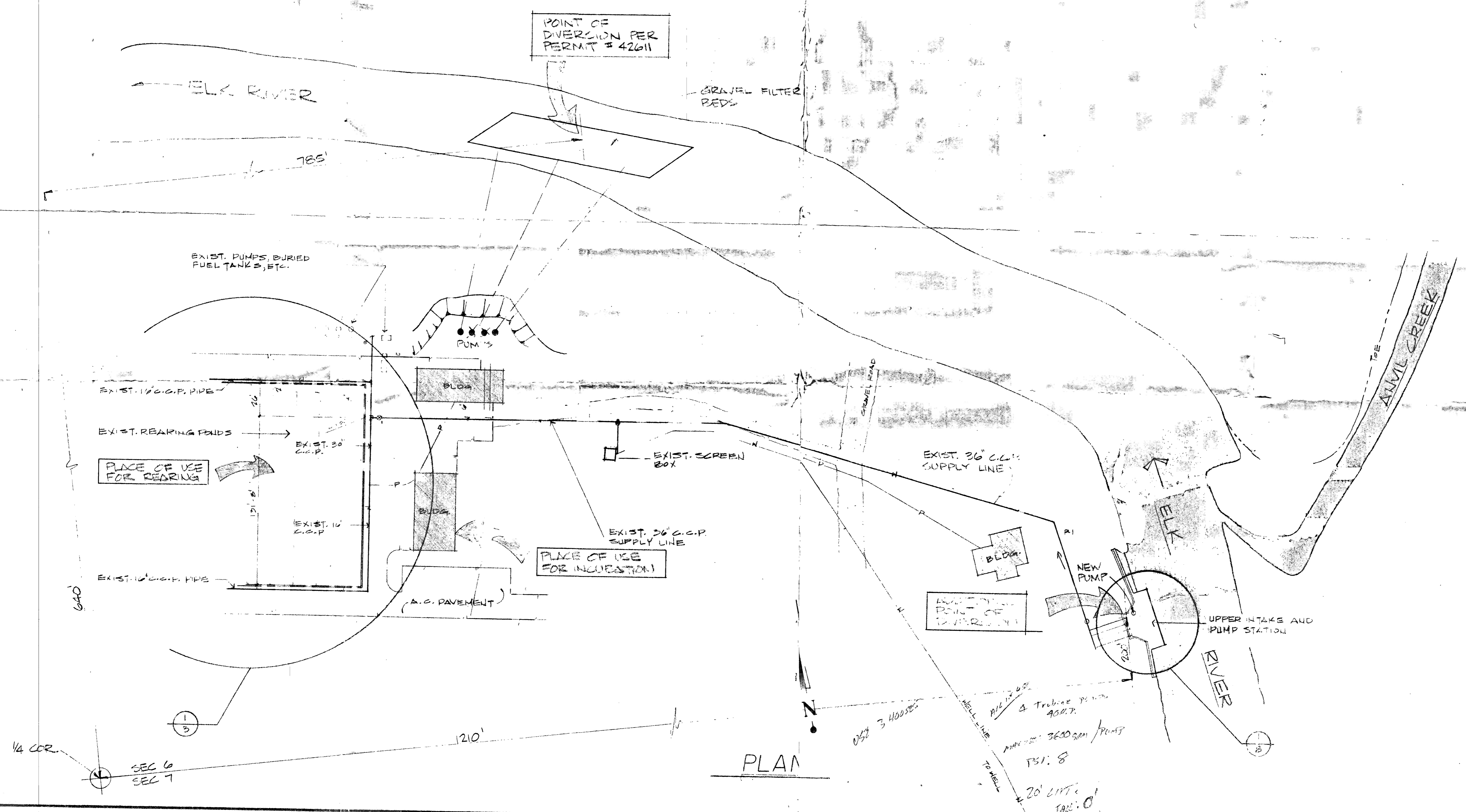


PLOT PLAN
SCALE: 1"=50'



44398
33339

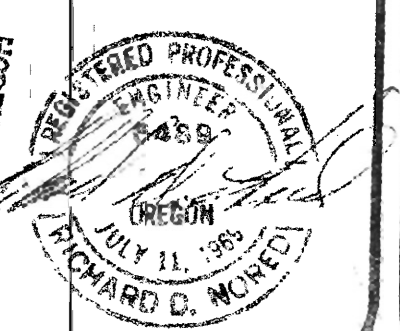
REVISIONS		FISH COMMISSION STATE OF OREGON ELK RIVER SALMON HATCHERY PLUMBING PLOT PLAN
	DATE 15 DEC. 1967	APP'VD <i>Robert H. Lehman</i> FISHERIES DIRECTOR
	DRAWN BY CVR	APP'VD <i>Edwin Madson</i> DIRECTOR OF ENGR.
	CHECKED BY	FILE NO. H17-6718A SHT. 17 OF 22



PLAN

1/4 COR.
SEC 6
SEC 7

RECEIVED
DEC 23 1985
WATER RESOURCES DEPT.
SALEM, OREGON



T-5740

PROJECTOR, DEPT. OF FISH & WILDLIFE
ADDITIONAL POINT OF DIVERSION TO INISFER AREA

PROJECT #
85710
DATE

1 OF 9 SHEET

WELL LINE
TO WELL
36\"/>