

R 74673

ANKENY NATIONAL WILDLIFE REFUGE

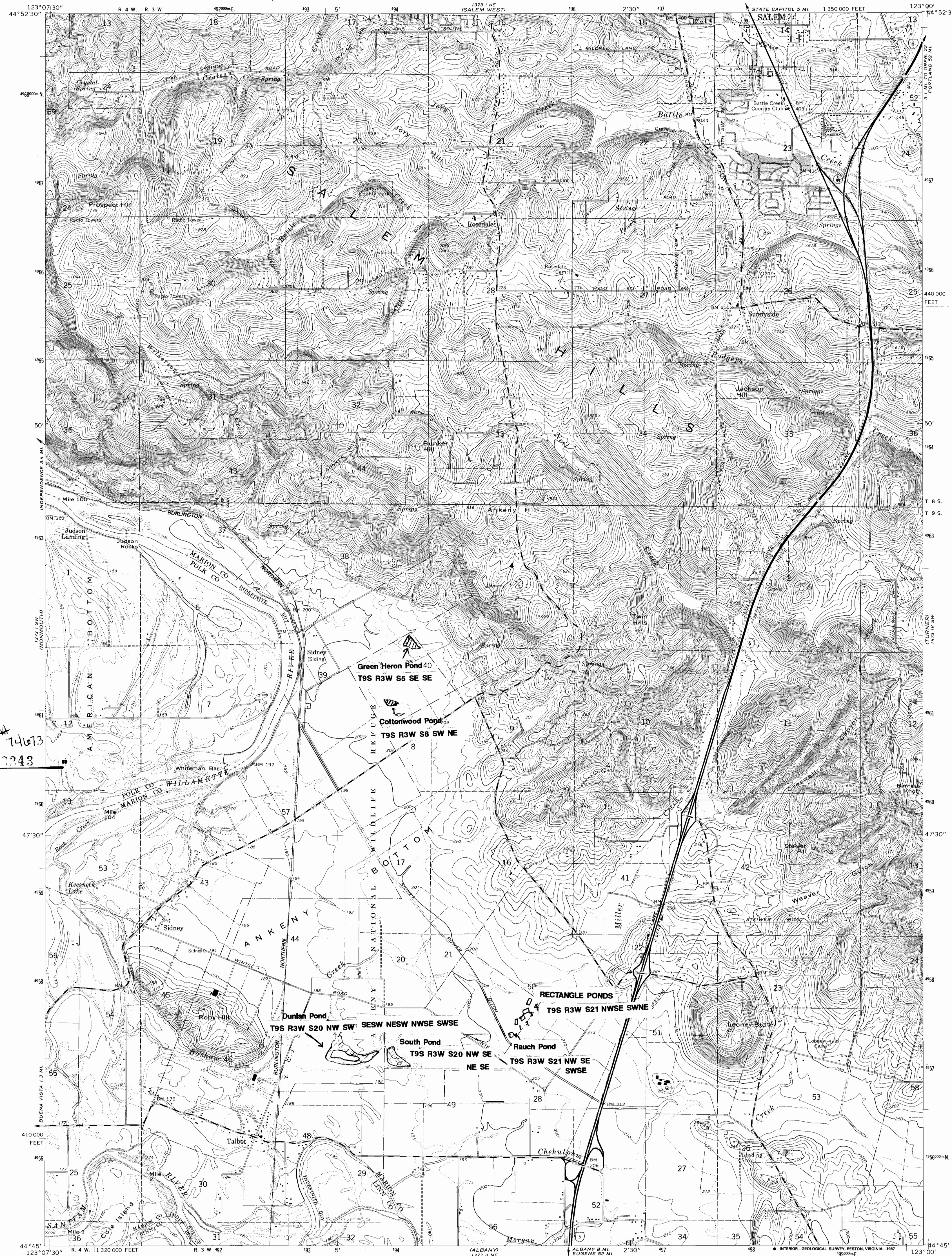
SIDNEY QUADRANGLE

UNITED STATES
DEPARTMENT OF THE INTERIOR
GEOLOGICAL SURVEY

HB 2153

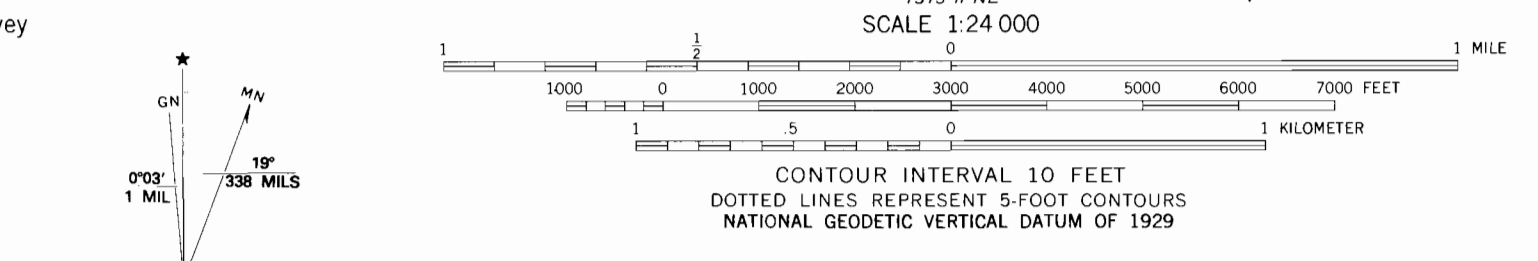
POND LOCATIONS

OREGON
7.5 MINUTE SERIES (TOPOGRAPHIC)
SE/4 SALEM 15' QUADRANGLE



APP# 74673
CERTIFICATE NO. 02243

Mapped, edited, and published by the Geological Survey
Control by USGS, USC&GS, USCE and State of Oregon
Topography by photogrammetric methods from aerial photographs taken 1967. Field checked 1970
Polyconic projection. 1927 North American datum
10,000-foot grid based on Oregon coordinate system, north zone
1000-meter Universal Transverse Mercator grid ticks, zone 10, shown in blue
To place on the predicted North American Datum 1983, move the projection lines 23 meters north and 95 meters east as shown by dashed corner ticks
Purple tint indicates extension of urban area
Revisions shown in purple compiled from aerial photographs taken 1982 and other sources. This information not field checked. Map edited 1986



ROAD CLASSIFICATION

Primary highway, all weather, hard surface	Light duty road, all weather, improved surface
Secondary highway, all weather, hard surface	Unimproved road, fair or dry weather

Interstate Route
 U.S. Route

SIDNEY, OREG.
SE/4 SALEM 15' QUADRANGLE
44123-G2-TF-024
1970
PHOTOREVISED 1986
DMA 1373 1 SE-SERIES V892

THIS MAP COMPLIES WITH NATIONAL MAP ACCURACY STANDARDS
FOR SALE BY U.S. GEOLOGICAL SURVEY, DENVER, COLORADO 80225, OR RESTON, VIRGINIA 22092
A FOLDER DESCRIBING TOPOGRAPHIC MAPS AND SYMBOLS IS AVAILABLE ON REQUEST

No Final Proof Map available

No Permit Map available