

SW 1/4 T20S R47EWM

MALHEUR COUNTY

20 47

TAX Lot

100

Code

32

Refer

1026

Revised on
2 - 6 - 98

1" = 1000'

CANCELLED
NUMBERS

- 200
- 1504
- 1507
- 1304
- 1305
- 1506
- 1000

FOR ASSESSMENT PURPOSE ONLY

TL. 400

1. South 234'
2. N40° 53' E 220.5'
3. N66° 35' W 157.2'

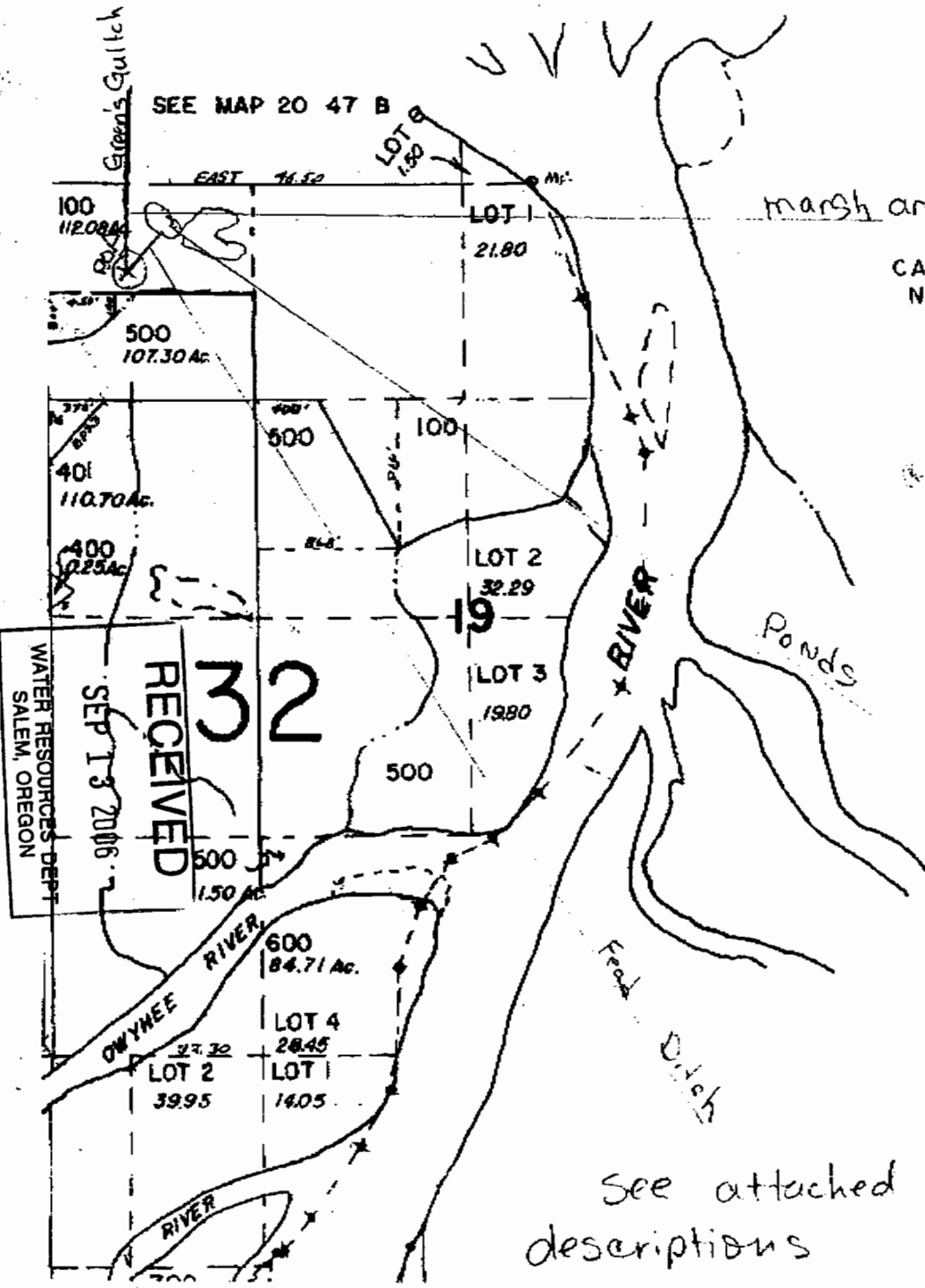
Application No. R-84404
Permit No.

RECEIVED

MAR 20 2000

WATER RESOURCES DEPT.
SALEM, OREGON

Post-Net Fax Note	7671	Date	11/30/09	Page	1
To	Brad Rowley	From	Malheur Co.		
Co/Dept		Assessors Office			
Phone #		Phone	(541) 473-5117		
Fax #	(208) 323-9191	Fax #			



See attached page for legal descriptions