

1XU
20Z

SW1/4 SE1/4 Sec. II T.11 S. R.13 E. W. M.
JEFFERSON COUNTY

1" = 100'
O Well

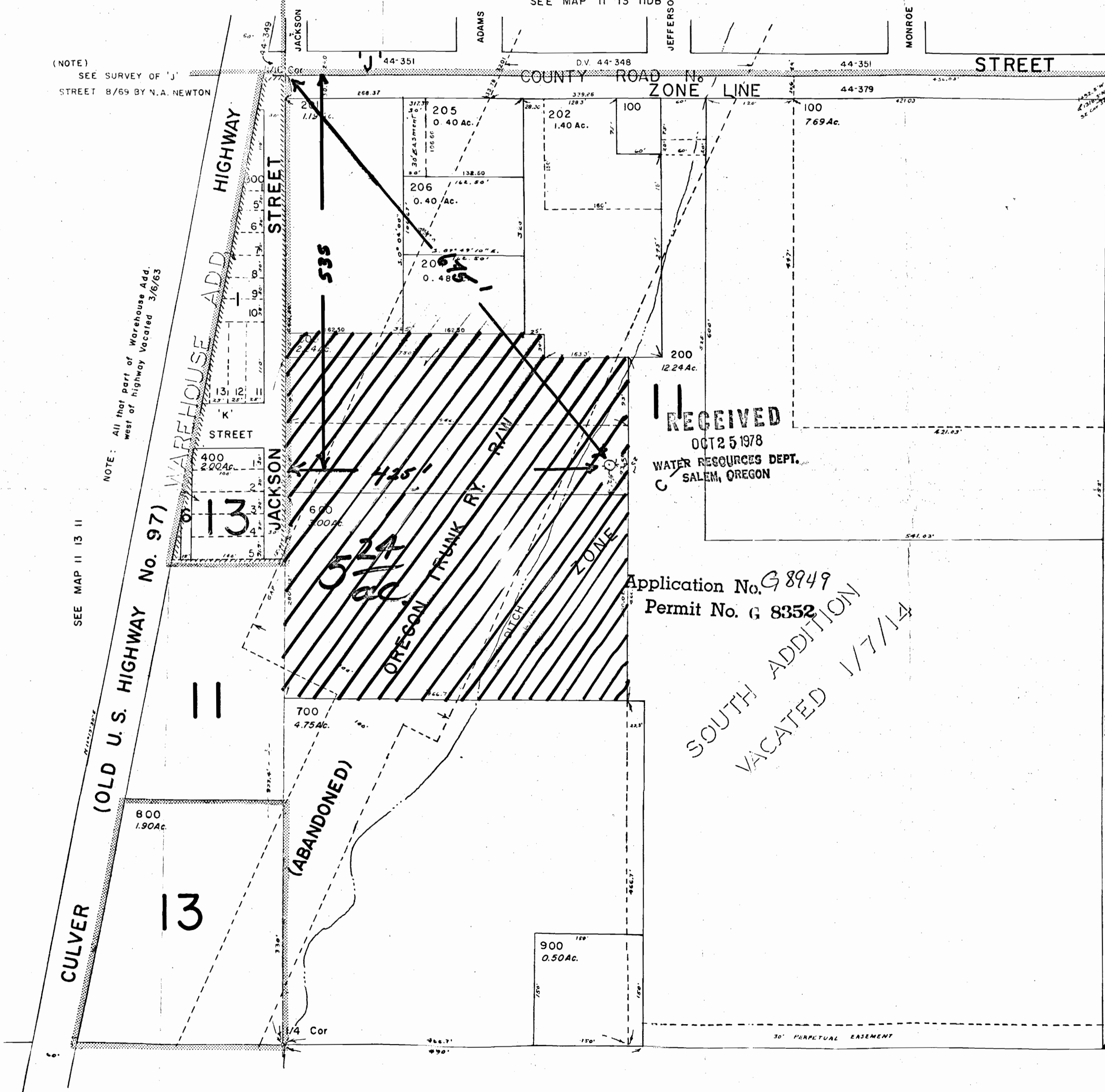
III Land To be Irrigated

SEE MAP II 13 IIDB

(NOTE)
SEE SURVEY OF 'J'
STREET 8/69 BY N.A. NEWTON

NOTE: All that part of Warehouse Add.
west of highway vacated 3/6/63

SEE MAP II 13 II



RECEIVED
OCT 25 1978
WATER RESOURCES DEPT.
SALEM, OREGON

Application No. G 8949
Permit No. G 8352
SOUTH ADDITION
VACATED 1/7/14

SEE MAP II 13 14