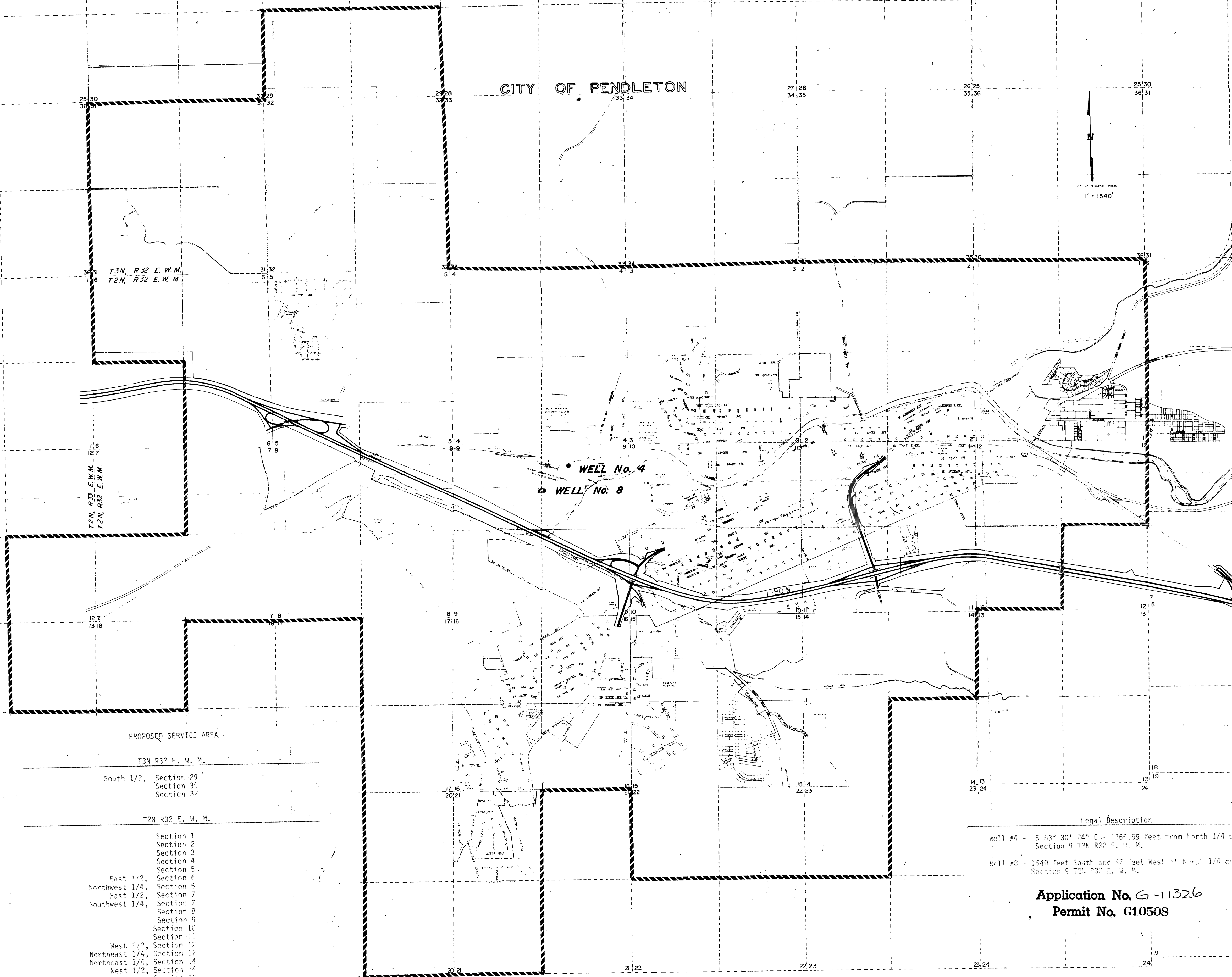
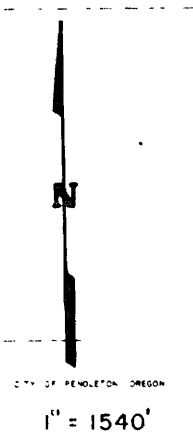


RECEIVED
 MAR 15 1985
 WATER RESOURCES DEPT
 SALEM, OREGON

CITY OF PENDLETON



PROPOSED SERVICE AREA

T3N R32 E. W. M.

South 1/2, Section 29
 Section 31
 Section 32

T2N R32 E. W. M.

- Section 1
- Section 2
- Section 3
- Section 4
- Section 5
- East 1/2, Section 6
- Northwest 1/4, Section 6
- East 1/2, Section 7
- Southwest 1/4, Section 7
- Section 8
- Section 9
- Section 10
- Section 11
- West 1/2, Section 12
- Northwest 1/4, Section 12
- Northwest 1/4, Section 14
- West 1/2, Section 14
- Section 15
- Section 16
- East 1/2, Section 17
- Northwest 1/4, Section 18
- East 1/2, Section 20
- West 1/2, Section 21
- North 1/2, Section 22
- Northwest 1/4, Section 23

T2N R35 E. W. M.

Southeast 1/4, Section 12
 Northeast 1/4, Section 13

Legal Description

Well #4 - S 53° 30' 24" E - 1365.59 feet from North 1/4 corner
 Section 9 T2N R32 E. W. M.
 Well #8 - 1640 feet South and 47 feet West of North 1/4 corner
 Section 9 T3N R32 E. W. M.

Application No. G-11326
Permit No. G10508