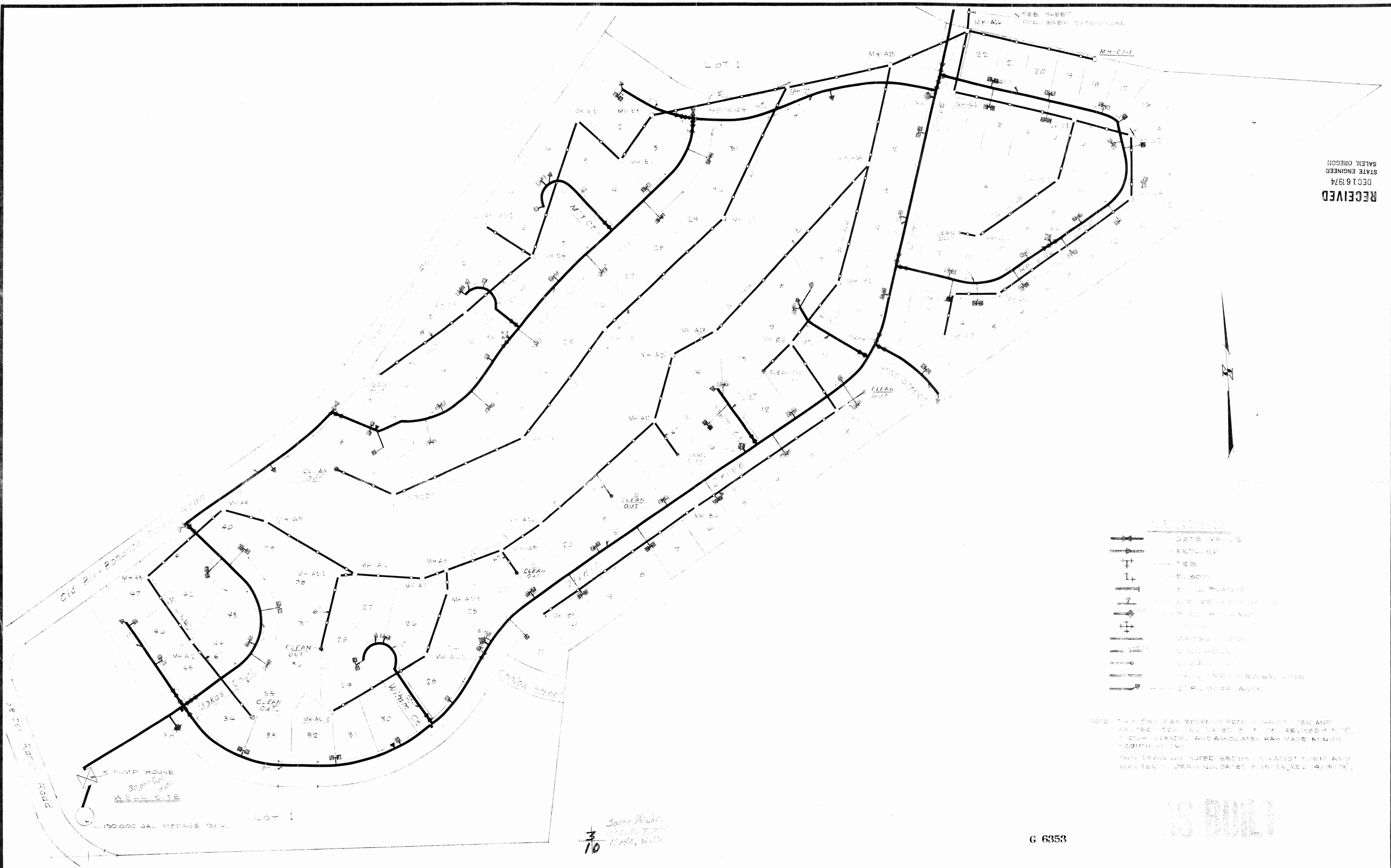


RECEIVED
 DEC 16 1974
 STATE ENGINEER
 SALEM, OREGON



- LEGEND**
- GATE VALVE
 - REDUCER
 - TEE
 - ELBOW
 - 90 DEGREE FLANGE
 - 45 DEGREE FLANGE
 - 180 DEGREE FLANGE
 - WATER LINE
 - SEWER LINE
 - CLEAN OUT
 - MANHOLE
 - VALVE
 - 2" FLANGE ANGLE

NOTE: THIS PLAN WAS REVISED FROM A PREVIOUS PLAN AND WATER LINES DATED 5/1/74, REVISED 5/1/74. OTHER CHANGES AND ASSOCIATES HAS MADE MINOR MODIFICATIONS.
 THIS DRAWING SUBJECT BEING A PART OF A PLAN AND WATER LINES DRAWING DATED 5/1/74, REV. 5/1/74.

3/10
 Source: W. Was
 1/2" S. T. 1/2"
 1/2" S. T. 1/2"

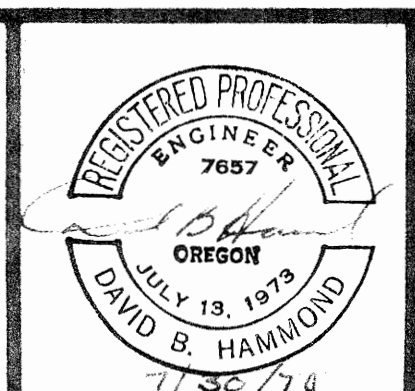
IS BUILT

G 6353

REV. BY	REVISION	DATE	REV. NO.

DORTCH SURVEYING & ENGINEERING
GREDEL and ASSOCIATES
 1905 OREGON AVENUE
 KLAMATH FALLS, OREGON 97601
 503-882-5445

BLEY-WAS HEIGHTS
 WATER - SEWER PLAN



DESIGNED BY: W.F.S.	DATE: 8/73	JOB NO. 4716
DRAWN BY: W.F.S.	DATE: 6/74	SERIAL NO.
SCALE: 1" = 100'		SHEET NO. D3-13

