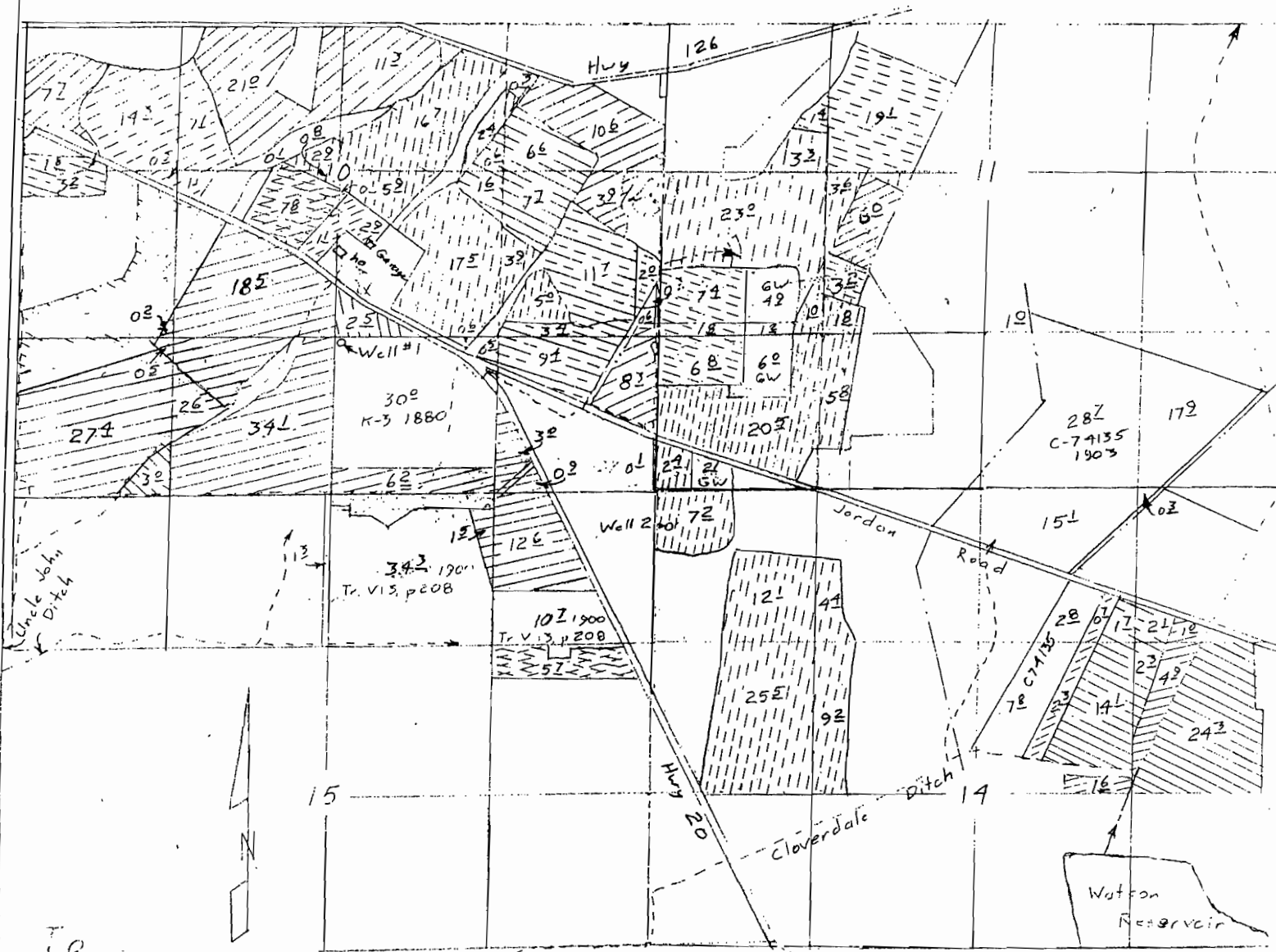


TOWNSHIP 15 SOUTH, RANGE 10 EAST, W. M.



- Scale 1" = 1320
- ⊖ C-291 (1880) 67<sup>2</sup>
  - ⊖ C-982 (1908) 42<sup>2</sup>
  - ⊖ C-24028 (1860) 25<sup>2</sup>
  - ⊖ H-144 (1886) 30
  - ⊖ C-303 (1881) 41<sup>2</sup>
  - ⊖ K-3 (1908) 30<sup>2</sup>
  - ⊖ C-24167 (1880) 48<sup>2</sup>
  - ⊖ V13, p 208 (1900)
  - ⊖ C-863 (1895) 40<sup>2</sup>
  - ⊖ C-2056 (1912) 29<sup>2</sup>
  - ⊖ C-24597 (1880) 3<sup>2</sup>
  - ⊖ C-74135 (1903) 175<sup>2</sup>

T-8900

**RECEIVED**  
AUG 22 2003  
WATER RESOURCES DEPT  
SALEM, OREGON

This map is for the purpose of locating a water right only and has no intent to provide legal dimensions or the location of property lines.

Certified Water Right Examiner  
*Bruce A. Estes*  
Bruce A. Estes  
Nov. 19, 1987  
STATE OF OREGON  
Renewed Dec 31, 2003  
Sheet 2 of 2

**ESTES SURVEYS, L.L.C.**  
PO Box 17519 Salem, OR 97305-7519 (503) 585-7593  
60382 Arnold Rd Bend, OR 97702 (541) 382-7391

Amended 31 Oct 02  
14 Jun 03  
28 Jun 03  
22 Aug 03