

2006 WESTLAND IRRIGATION DISTRICT

T-10261

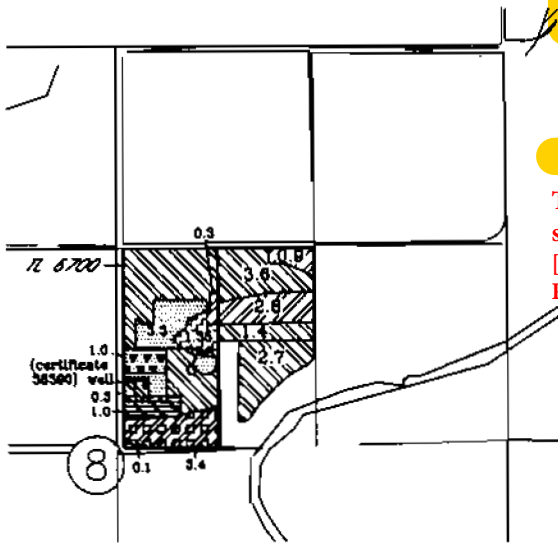
540.580 Transfer, Notice 2006-01,

RR from C. 80450 Duquette to Quick

Cert. 76717 & 76799 Primaries;

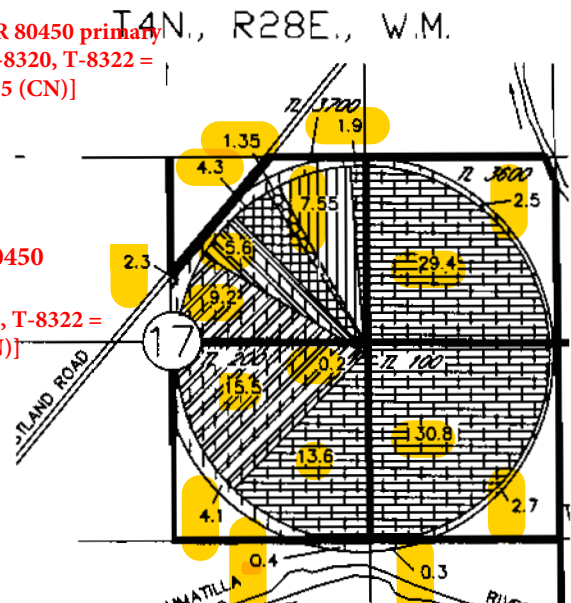
Cert. 79439, 38390 & 80395 Supplementals.

T4N., R28E., W.M.



T-10261 RR 80450 primary
[T-8992, T-8320, T-8322 =
RR C. 80395 (CN)]

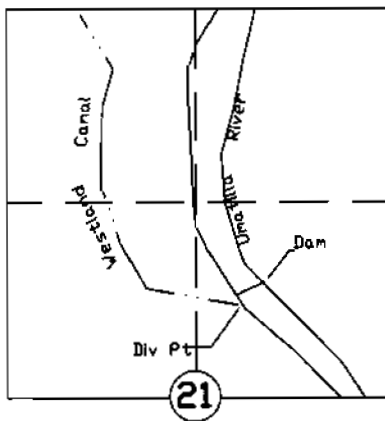
T-10261 RR 80450
supplemental
[T-8992, T-8320, T-8322 =
RR C.80395 (CN)]



- FROM: 76717, 79439 & 38390, 1.0 acre
- TD: 76717, 79439 & 38390, 1.0 acre
- FROM: 76717 & 79439, 1.0 acre
- TD: 76717 & 79439, 1.0 acre
- FROM: 76717 & 79439, 4.3 acres
- TD: 76717 & 79439, 4.3 acres
Diminish existing primary 80395 to supplemental

- FROM: 76799, 1.35 acres
- TD: 76799, 1.35 acres
Diminish existing primary 80395 to supplemental
- Cert. 76717 & 79439 not involved
- Cert. 76799 not involved
- Cert. 76718 & 79439 not involved
- Cert. 80395 not involved
- Cert. 38390 not involved
- 7.55 ac. cert. 76715 & 79439
from 2006 temporary transfer

T3N., R 29E., W.M.

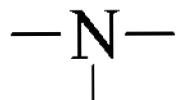


Existing primary certificate 80395 on the to ground in section 17 will become supplemental to incoming primaries 76717 & 76799.

RECEIVED

APR 17 2006

WATER RESOURCES DEPT
SALEM, OREGON



SCALE IN FEET

NOTE: THE PURPOSE OF THIS MAP IS TO IDENTIFY THE APPROXIMATE LOCATION OF THE WATER RIGHT. IT IS NOT INTENDED TO PROVIDE INFORMATION RELATIVE TO THE LOCATION OF PROPERTY OWNERSHIP BOUNDARY LINES.